
STATUTORY INSTRUMENTS

1992 No. 2967

HIGHWAYS, ENGLAND AND WALES

The Leeds City Council (Crown Point Bridge Improvement) Scheme 1992 Confirmation Instrument 1992

Made - - - - 24th November 1992

The Secretary of State for Transport makes this Instrument in exercise of powers conferred by section 106(3) of the Highways Act 1980⁽¹⁾, and now vested in him⁽²⁾, and of all other enabling powers:—

1. The Leeds City Council (Crown Point Bridge Improvement) Scheme 1992 is hereby confirmed without modifications.
2. The said Scheme as confirmed (hereinafter referred to as “the Scheme”) is set out in the Schedule hereto and copies of the Scheme with its accompanying plan are deposited at The Department of Transport, 43 Marsham Street, London SW1P 3PY and at the offices of the City Engineer, Leeds City Council, 2nd Floor, Dudley House, 133 Albion Street, Leeds, LS2 8JX.
3. The Scheme will become operative on the date on which notice that it has been confirmed is first published in accordance with paragraph 1 of Schedule 2 to the Highways Act 1980.
4. This Instrument may be cited as the Leeds City Council (Crown Point Bridge Improvement) Scheme 1992 Confirmation Instrument 1992.

Signed by authority of the Secretary of State for Transport

24th November 1992

P. A. Shaw
Regional Director, Northern Region,
Department of Transport

(1) 1980 c. 66.
(2) S.I.1981/238.

Status: This is the original version (as it was originally made). This item of legislation is currently only available in its original format.

THE SCHEDULE

THE LEEDS CITY COUNCIL (CROWN POINT BRIDGE IMPROVEMENT) SCHEME 1992

The Leeds City Council (hereinafter referred to as “the Council”) make this Scheme in exercise of their powers under Section 106(3) of the Highways Act 1980 and of all other enabling powers:

1. The Council are authorised to construct over the Aire and Calder Navigation and the navigable waters of the River Aire the bridge specified in the Schedule to this Scheme as part of the highway Crown Point Road which they are proposing to improve between East Street and a point 60 metres south of Bowman Lane in the City of Leeds.

2. This Scheme may be cited as the Leeds City Council (Crown Point Bridge Improvement) Scheme 1992.

THE SCHEDULE TO THE SCHEME

PLANS AND SPECIFICATIONS OF THE CROWN POINT BRIDGE

The location and general design of the bridge are shown on the plan numbered SE/L.14/106/5, marked “The Leeds City Council (Crown Point Bridge Improvement) Scheme 1992” sealed with the Common Seal of the Council and deposited at the offices of the Leeds County Council, Chief Legal Officer, Room 213, Civic Hall, Leeds LS1 1UR and at the Secretary of State for Transport, Northern Regional Office, Local Authority Orders Section, Wellbar House, Gallowgate, Newcastle upon Tyne, NE1 4TD.

POINTS OF COMMENCEMENT AND TERMINATION

From a point on the south bank of the River Aire, 86 metres north of the junction of Black Bull Street with Clarence Road.

To a point on the north bank of the River Aire, 90 metres south of the junction of Crown Point Road with East Street.

SPAN

A single span varying between 36.6 metres (upstream) and 41.6 metres (downstream).

HEADWAY

A minimum headway of 4.0 metres above British Waterways' “Normal Water Level” upstream of Leeds Lock of 23.905 metres AOD Newlyn, over the navigable waterway.

WATERWAY

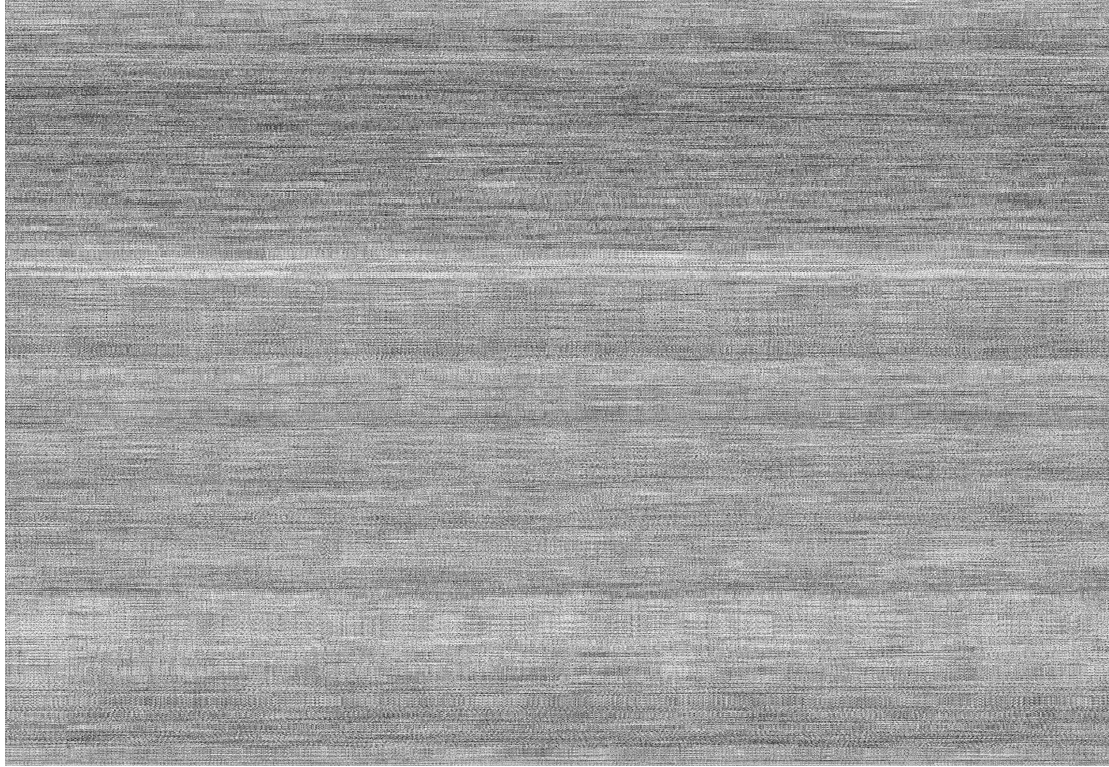
A minimum clear navigable waterway varying between 18.18 metres (upstream) and 27.00 metres (downstream).

OVERALL DIMENSIONS

The existing bridge, 13.38 metres wide overall, which carries a 9.19 metres wide single carriageway, with a footway 1.88 metres wide on either side, will be replaced by the widened bridge which will

Status: This is the original version (as it was originally made). This item of legislation is currently only available in its original format.

be 20.28 metres wide overall, carrying a 14.60 metres wide single carriageway with a footway 2.63 metres wide on either side.



THE COMMON SEAL of the LEEDS CITY COUNCIL was hereunto affixed this Fifteenth day of April 1992 in the presence of:

L.S.

Jon Trickett
Chairman of the Policy and Resources
Committee

Paul Rogerson
Chief Legal Officer