

Status: This is the original version (as it was originally made). This item of legislation is currently only available in its original format.

SCHEDULE 13

PROPORTIONS AND FORM OF LETTERS, NUMERALS AND OTHER CHARACTERS

PART II

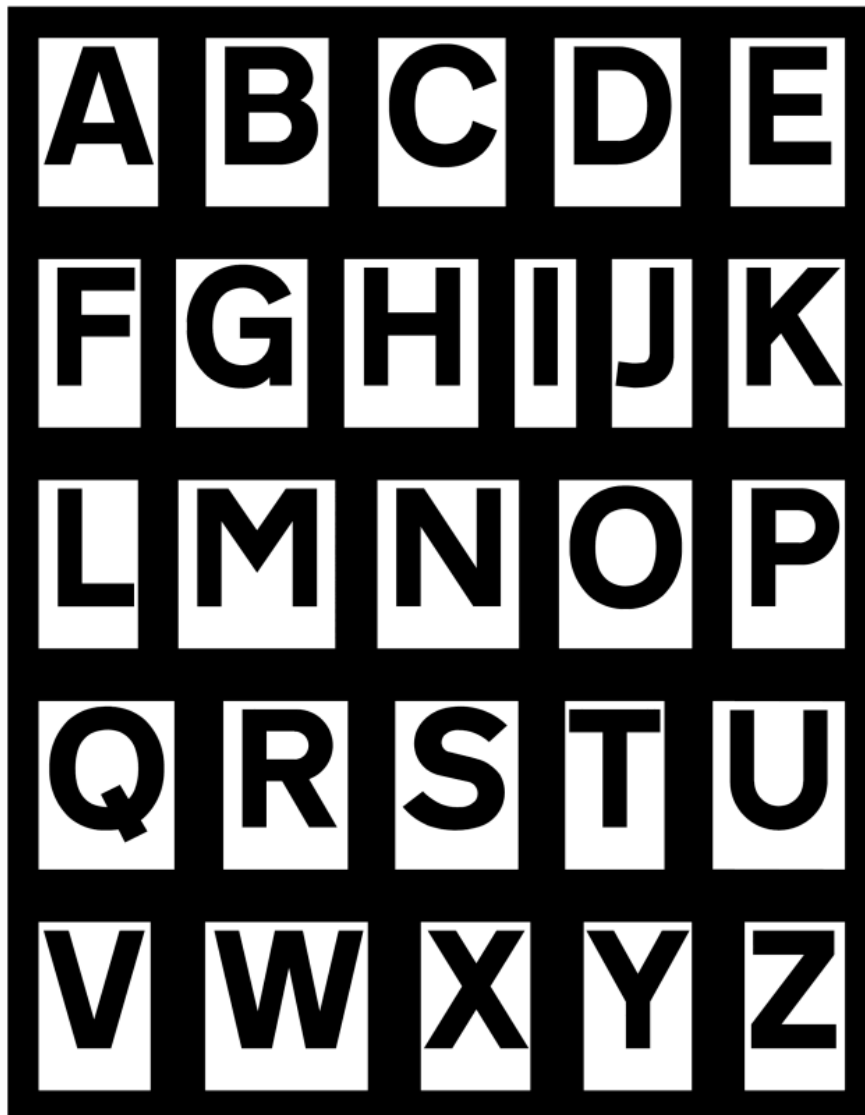
PROPORTIONS AND FORM OF LETTERS,
NUMERALS AND OTHER CHARACTERS

SCHEDULE 13 PART II

Regulations 13(3), 13(8)

PROPORTIONS AND FORM OF LETTERS, NUMERALS AND OTHER CHARACTERS

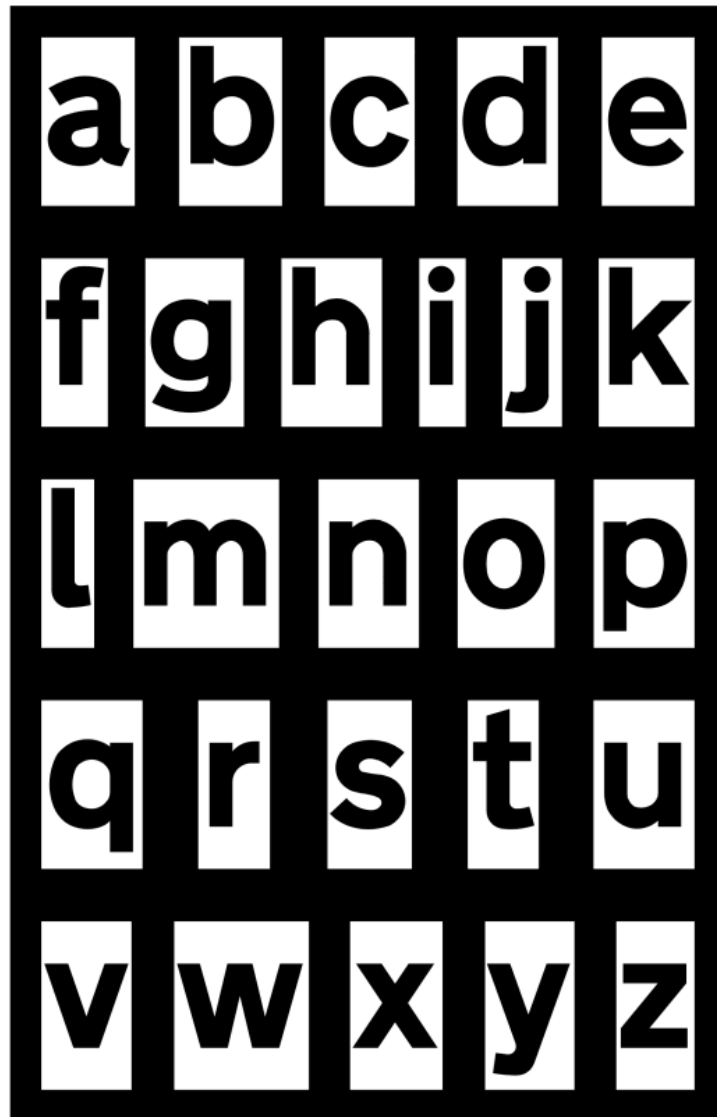
(for use on a sign or parts of a sign with a white, yellow, or orange background other than the signs shown in diagrams 2714 and 2715 except where the characters in those diagrams are varied to black)



Status: This is the original version (as it was originally made). This item of legislation is currently only available in its original format.

SCHEDULE 13 PART II PROPORTIONS AND FORM OF LETTERS, NUMERALS
AND OTHER CHARACTERS (contd.)

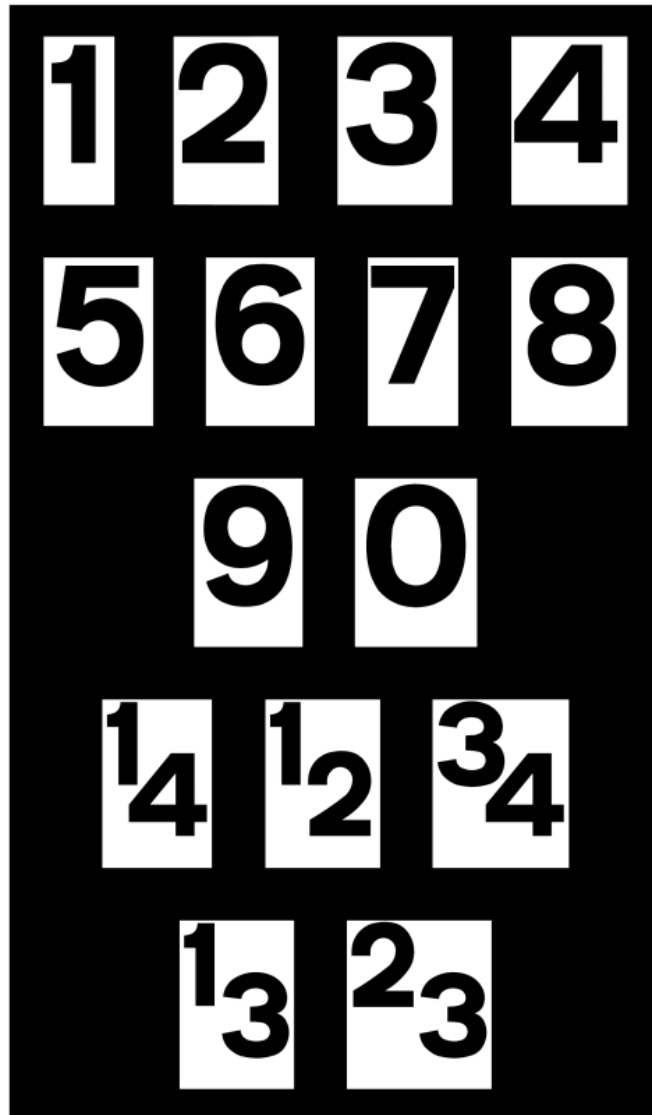
(for use on a sign or parts of a sign with a white, yellow, or orange background other than the signs shown in diagrams 2714 and 2715 except where the characters in those diagrams are varied to black)



Status: This is the original version (as it was originally made). This item of legislation is currently only available in its original format.

SCHEDULE 13 PART II PROPORTIONS AND FORM OF LETTERS, NUMERALS
AND OTHER CHARACTERS (contd.)

(for use on a sign or parts of a sign with a white, yellow, or orange background other than the signs shown in diagrams 2714 and 2715 except where the characters in those diagrams are varied to black)



Status: This is the original version (as it was originally made). This item of legislation is currently only available in its original format.

SCHEDULE 13 PART II PROPORTIONS AND FORM OF LETTERS, NUMERALS AND OTHER CHARACTERS (contd.)

(for use on a sign or parts of a sign with a white, yellow, or orange background other than the signs shown in diagrams 2714 and 2715 except where the characters in those diagrams are varied to black)

