

Commission Regulation (EEC) No 3801/92 of 23 December 1992  
concerning the classification of certain goods in the combined nomenclature

COMMISSION REGULATION (EEC) NO 3801/92

of 23 December 1992

concerning the classification of certain goods in the combined nomenclature

THE COMMISSION OF THE EUROPEAN COMMUNITIES,

Having regard to the Treaty establishing the European Economic Community,

Having regard to Council Regulation (EEC) No 2658/87 of 23 July 1987 on the tariff and statistical nomenclature and on the Common Customs Tariff<sup>(1)</sup>, as last amended by Commission Regulation (EEC) No 3800/92<sup>(2)</sup>, and in particular Article 9 thereof,

Whereas in order to ensure uniform application of the combined nomenclature annexed to the said Regulation, it is necessary to adopt measures concerning the classification of the goods referred to in the Annex to this Regulation;

Whereas Regulation (EEC) No 2658/87 has set down the general rules for the interpretation of the combined nomenclature and these rules also apply to any other nomenclature which is wholly or partly based on it or which adds any additional subdivisions to it and which is established by specific Community provisions, with a view to the application of tariff or other measures relating to trade in goods;

Whereas, pursuant to the said general rules, the goods described in column 1 of the table annexed to the present Regulation must be classified under the appropriate CN codes indicated in column 2, by virtue of the reasons set out in column 3;

Whereas it is appropriate that binding tariff information issued by the customs authorities of Member States in respect of the classification of goods in the combined nomenclature and which do not conform to the rights established by this Regulation, can continue to be invoked under the provisions in Article 65 of Commission Regulation (EEC) No 3796/90<sup>(3)</sup>, for a period of three months by the holder if a binding contract has been concluded such as is envisaged in Article 14 (3) (a) or (b) of Commission Regulation (EEC) No 1715/90<sup>(4)</sup>;

Whereas this Regulation concerns also the products referred to in Commission Regulation (EEC) No 1074/80<sup>(5)</sup>; whereas, therefore, the latter should be repealed;

Whereas the measures provided for in this Regulation are in accordance with the opinion of the Nomenclature Committee,

HAS ADOPTED THIS REGULATION:

*Article 1*

The goods described in column 1 of the annexed table are now classified within the combined nomenclature under the appropriate CN codes indicated in column 2 of the said table.

---

**Changes to legislation:** Commission Regulation (EEC) No 3801/92 is up to date with all changes known to be in force on or before 12 December 2023. There are changes that may be brought into force at a future date. Changes that have been made appear in the content and are referenced with annotations. (See end of Document for details) [View outstanding changes](#)

---

#### *Article 2*

Binding tariff information issued by the customs authorities of Member States which do not conform to the rights established by this Regulation can continue to be invoked pursuant to the provisions of Article 6 of Regulation (EEC) No 3796/90 for a period of three months by the holder if a binding contract has been concluded as envisaged in Article 14 (3) (a) or (b) of Regulation (EEC) No 1715/90.

#### *Article 3*

Regulation (EEC) No 1074 is hereby repealed.

#### *Article 4*

This Regulation shall enter into force on the 21st day following its publication in the *Official Journal of the European Communities*.

This Regulation shall be binding in its entirety and directly applicable in all Member States.

Done at Brussels, 23 December 1992.

*For the Commission*

Christiane SCRIVENER

*Member of the Commission*

## ANNEX

Document Generated: 2023-12-12

**Changes to legislation:** Commission Regulation (EEC) No 3801/92 is up to date with all changes known to be in force on or before 12 December 2023. There are changes that may be brought into force at a future date. Changes that have been made appear in the content and are referenced with annotations. (See end of Document for details) View outstanding changes

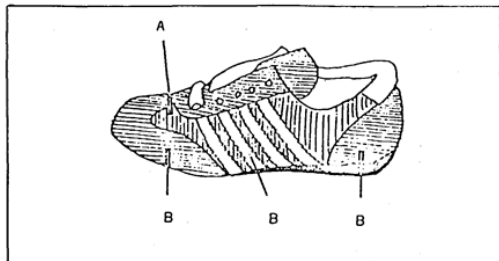
## ANNEX

<b>Description</b> <b>(1)</b>	<b>CN classification</b> <b>(2)</b>	<b>(3)</b>
1. Training shoes with outer soles of coarsely patterned rubber or plastics and uppers of textile material on which strips of leather and/or plastics-coated textile material are sewn externally in various combinations, covering the surface up to approximately 70 %. (See sketch Nos. 1 to 6)	6404 11 00	Classification is determined by general rules 1 and 6 for the interpretation of the combined nomenclature by notes 3 and 4 (a) and the additional note 1 to Chapter 64 and by the wording of CN codes 6404 and 6404 11 00. After the removal of the strips of leather and/or plastics-coated textile material, all of which are regarded as reinforcements, the external surface area of the uppers consists entirely of textile material.
2. Training shoes with a rubber outer sole, a 27-cm long in-sole and a plastics upper on the outside of which are sewn leather strips or pieces covering about 40 % of the surface.	6402 99 93	Classification is determined by general rules 1 and 6 for the interpretation of the combined nomenclature by note 4 (a) and the additional note 1 to Chapter 64 and by the wording of CN codes 6402, 6402 99 and 6402 99 93.
3. Training shoes with outer soles of plastics and textile uppers on which are sewn at various points pieces of leather (65 %) and plastics (18 %). (See sketch No 7)	6404 11 00	Classification is determined by general rules 1 and 6 for the interpretation of the combined nomenclature, by notes 3 and 4 (a) and the additional note 1 to Chapter 64 and by the wording of CN codes 6404 and 6404 11 00. After removal of the pieces of leather and plastics, all of which are regarded as reinforcements, the external surface area of the uppers consists entirely of textile material
4. Training shoes which cover the ankle, with outer soles of coarsely	6402 91 90	Classification is determined by general rules 1 and 6 for the interpretation of the combined nomenclature, by

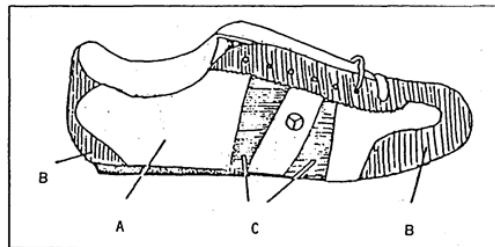
**Changes to legislation:** Commission Regulation (EEC) No 3801/92 is up to date with all changes known to be in force on or before 12 December 2023. There are changes that may be brought into force at a future date. Changes that have been made appear in the content and are referenced with annotations. (See end of Document for details) View outstanding changes

	<p>patterned rubber and uppers of plastics (79 %) and leather (21 %) completely covering the textile internal shell, which serves as a lining on to which the leather and plastics are sewn. (See sketch No 8)</p>		<p>note 4 (a) and the additional note 1 to Chapter 64 and by the wording of CN codes 642, 6402 91 and 6402 91 90</p>
5.	<p>Training shoes which cover the ankle with in-soles of not less than 24 cm, outer soles of coarsely patterned rubber and uppers of leather (84 %) and plastics (16 %) completely covering an inner shell of textile material which could not itself serve as the outer part of the upper. The leather and plastics are sewn onto the shell. (See sketch No 9)</p>	6403 91 13	<p>Classification is determined by general rules 1 and 6 for the interpretation of the combined nomenclature, by notes 3 and 4 (a) and the additional note 1 to Chapter 64 and by the wording of CN codes 6403, 6403 91 and 6403 91 13</p>
6.	<p>Hiking/trekking boots which cover the ankle, with outer soles of coarsely patterned rubber and uppers comprising a textile bootie, on to which are sewn pieces of leather covering about 80 % of the external surface excluding the area of the integral tongue. (See sketch No 10)</p>	6406 19 90	<p>Classification is determined by general rules 1 and 6 for the interpretation of the combined nomenclature, by note 4 (a) and the additional note 1 to Chapter 64 and by the wording of CN codes 6404, 6404 19 and 6404 19 90. After removal of the pieces of leather, all of which are regarded as reinforcements, the external surface area of the uppers consists entirely of textile material</p>

**Changes to legislation:** Commission Regulation (EEC) No 3801/92 is up to date with all changes known to be in force on or before 12 December 2023. There are changes that may be brought into force at a future date. Changes that have been made appear in the content and are referenced with annotations. (See end of Document for details) View outstanding changes

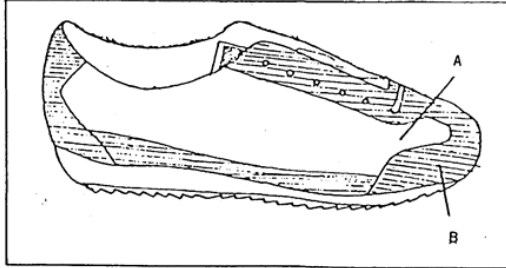


No 1 (1) A — Textile material (visible), approximately 31 %  
B — Leather, approximately 69 %

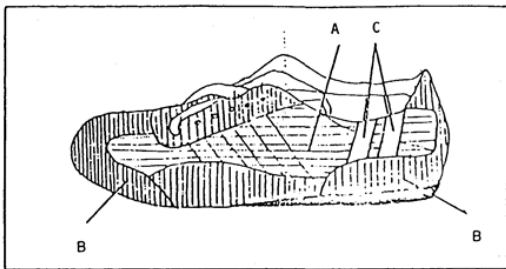


No 2 (1) A — Textile material (visible), approx. 47 %  
B — Leather, approximately 37 %  
C — Textile material covered in plastics, approximately 16 %

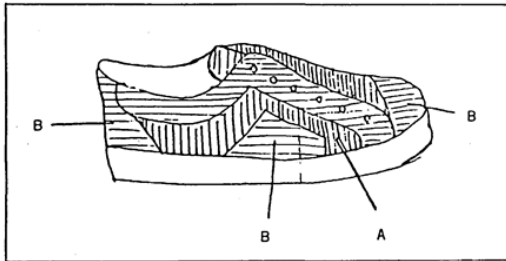
**Changes to legislation:** Commission Regulation (EEC) No 3801/92 is up to date with all changes known to be in force on or before 12 December 2023. There are changes that may be brought into force at a future date. Changes that have been made appear in the content and are referenced with annotations. (See end of Document for details) View outstanding changes



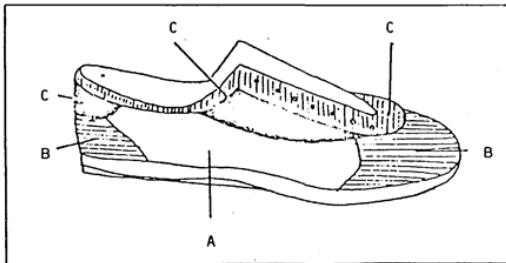
No. 3 (!) A — Textile material (visible), approximately 43 %  
B — Leather, approximately 57 %



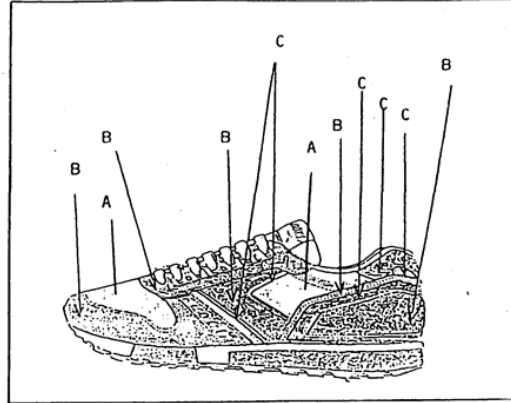
No. 4 (!) A — Textile material (visible), approximately 32 %  
B — Leather, approximately 65 %  
C — Textile material covered in plastic, approximately 3 %



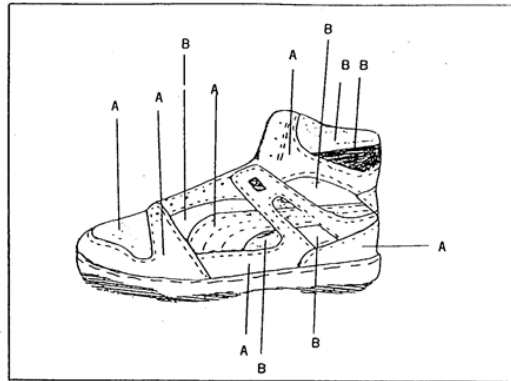
No. 5 (!) A — Textile material (visible), approximately 30 %  
B — Leather, approximately 70 %



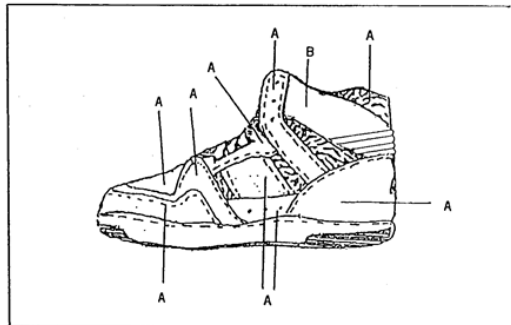
No. 6 (!) A — Textile material (visible), approximately 32 %  
B — Leather, approximately 31 %  
C — Textile material covered in plastic, approximately 37 %



No. 7 (!) A — Textile material  
B — Leather  
C — Plastic material

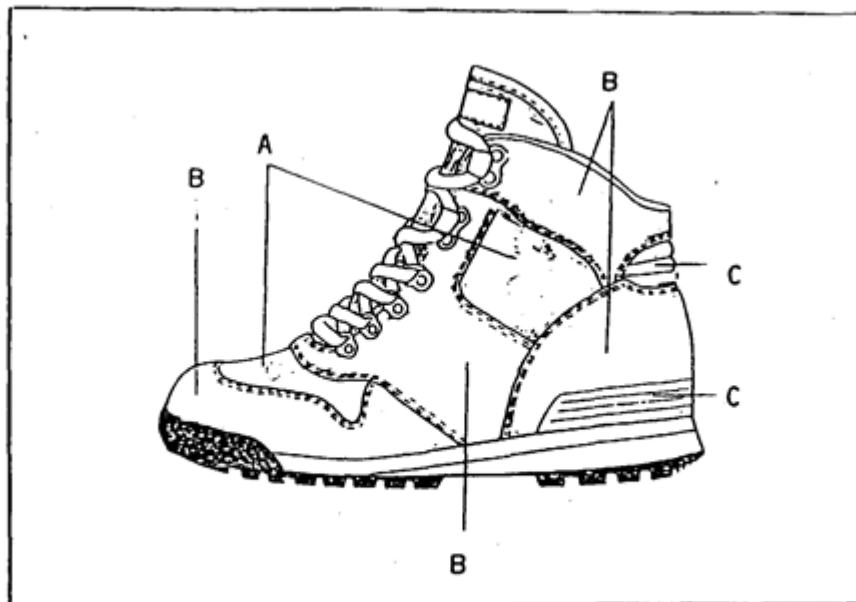


No. 8 (!) A — Leather  
B — Plastic material



No. 9 (!) A — Leather  
B — Plastic material

**Changes to legislation:** Commission Regulation (EEC) No 3801/92 is up to date with all changes known to be in force on or before 12 December 2023. There are changes that may be brought into force at a future date. Changes that have been made appear in the content and are referenced with annotations. (See end of Document for details) View outstanding changes



No 10 <sup>(1)</sup> A — Textile material  
B — Leather  
C — Plastic material

<sup>(1)</sup> The drawings are of a purely illustrative nature.

---

**Changes to legislation:** Commission Regulation (EEC) No 3801/92 is up to date with all changes known to be in force on or before 12 December 2023. There are changes that may be brought into force at a future date. Changes that have been made appear in the content and are referenced with annotations. (See end of Document for details) [View outstanding changes](#)

---

- (1) [OJ No L 256, 7. 9. 1987, p. 1.](#)
- (2) See page 8 of this Official Journal.
- (3) [OJ No L 365, 28. 12. 1990, p. 17.](#)
- (4) [OJ No L 160, 26. 6. 1990, p. 1.](#)
- (5) [OJ No L 113, 1. 5. 1980, p. 54.](#)



**Changes to legislation:**

Commission Regulation (EEC) No 3801/92 is up to date with all changes known to be in force on or before 12 December 2023. There are changes that may be brought into force at a future date. Changes that have been made appear in the content and are referenced with annotations.

[View outstanding changes](#)

**Changes and effects yet to be applied to :**

- Annex amendment by [EUR 1999/936](#) Regulation
- Annex amendment by [EUR 2009/1179](#) Regulation