

Commission Delegated Regulation (EU) 2019/254 of 9 November 2018
on the adaptation of Annex III to Regulation (EU) No 1315/2013 of the
European Parliament and of the Council on Union guidelines for the
development of the trans-European transport network (Text with EEA relevance)

COMMISSION DELEGATED REGULATION (EU) 2019/254

of 9 November 2018

on the adaptation of Annex III to Regulation (EU) No 1315/2013
of the European Parliament and of the Council on Union guidelines
for the development of the trans-European transport network

(Text with EEA relevance)

THE EUROPEAN COMMISSION,

Having regard to the Treaty on the Functioning of the European Union,

Having regard to Regulation (EU) No 1315/2013 of the European Parliament and of the Council of 11 December 2013 on Union guidelines for the development of the trans-European transport network and repealing Decision No 661/2010/EU⁽¹⁾, and in particular Article 49(6) thereof,

Whereas:

- (1) Regulation (EU) No 1315/2013 provides for the possibility to adapt the indicative maps of the trans-European transport network (TEN-T) which has been extended to specific neighbouring countries, based on high-level agreements on transport infrastructure networks between the Union and the neighbouring countries concerned.
- (2) High-level agreements on the adaptation of the indicative extension of the comprehensive TEN-T maps and on the identification of the core network connections on the comprehensive network maps were signed between the Union and Eastern Partnership countries (Republic of Armenia, Azerbaijan, Belarus, Republic of Moldova and Ukraine) on 24 November 2017. The high-level agreement between the Union and Georgia was signed on 18 July 2018. The agreements concern the lines of the railway and road networks, as well as ports and airports. The adaptation of the indicative comprehensive network maps and, in particular, the identification of the indicative core network should allow the Union to better target its cooperation with the Eastern Partnership countries concerned.
- (3) Regulation (EU) No 1315/2013 should therefore be amended accordingly,

HAS ADOPTED THIS REGULATION:

Article 1

Annex III to Regulation (EU) No 1315/2013 is amended as set out in the Annex to this Regulation.

Changes to legislation: There are outstanding changes not yet made to Commission Delegated Regulation (EU) 2019/254. Any changes that have already been made to the legislation appear in the content and are referenced with annotations. (See end of Document for details) [View outstanding changes](#)

Article 2

This Regulation shall enter into force on the twentieth day following that of its publication in the *Official Journal of the European Union*.

This Regulation shall be binding in its entirety and directly applicable in all Member States.

Done at Brussels, 9 November 2018.

For the Commission

The President

Jean-Claude JUNCKER

Changes to legislation: There are outstanding changes not yet made to Commission Delegated Regulation (EU) 2019/254. Any changes that have already been made to the legislation appear in the content and are referenced with annotations. (See end of Document for details) View outstanding changes

ANNEX

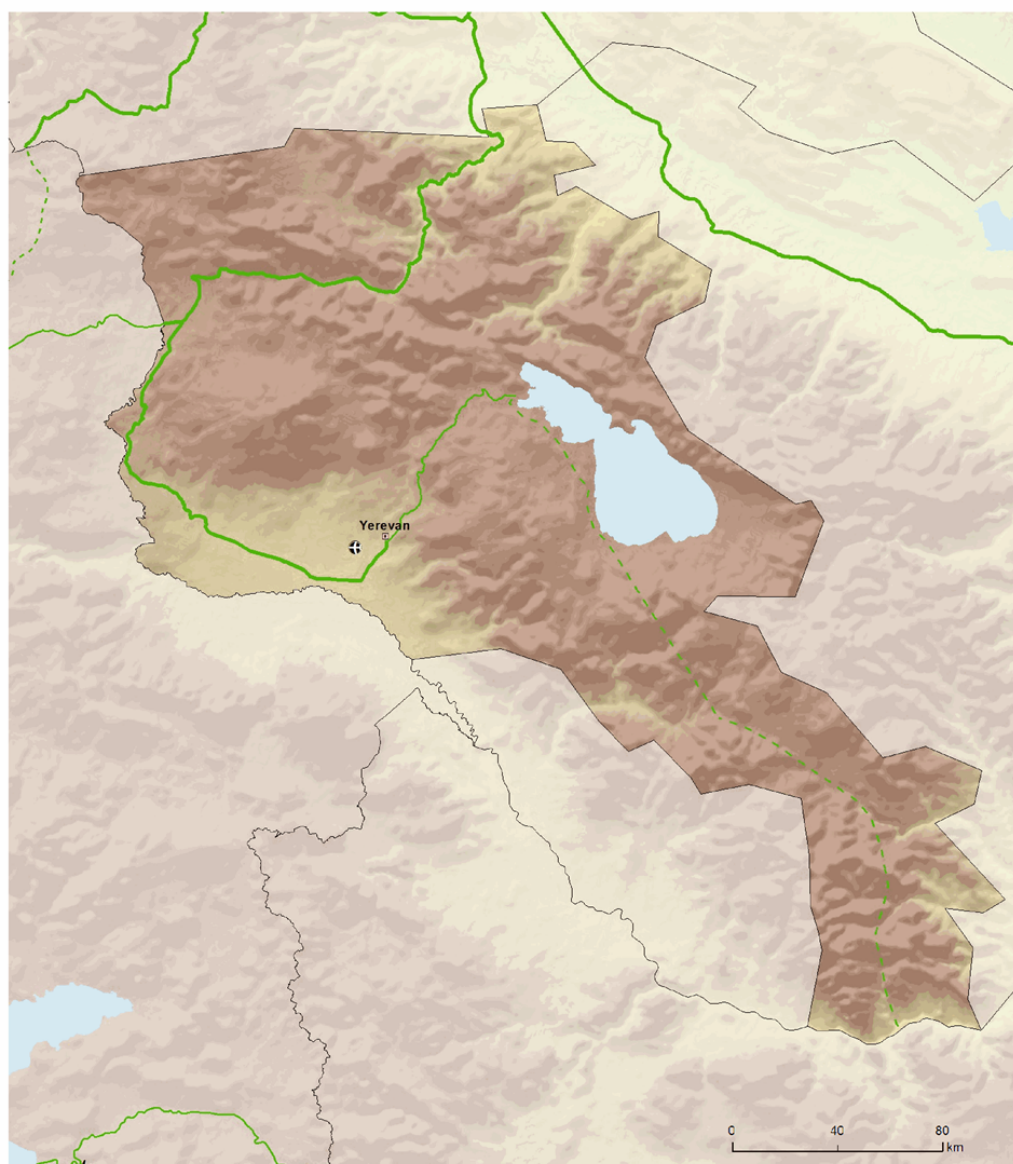
Annex III is amended as follows:

- (1) in Section 15 (Republic of Armenia, Azerbaijan, Georgia) the following maps are added (15.3 and 15.4 concerning the Republic of Armenia):

15.3 Indicative maps of the core network in the Republic of Armenia, railways
Comprehensive Network: Railways, ports, rail-road-terminals and airports
Core Network: Railways, ports, rail-road-terminals and airports
Eastern Partnership Transport Network: Republic of Armenia



15



Comprehensive		Core		Comprehensive		Core		Comprehensive		Core	
	Conventional rail / Completed		Conventional rail / To be upgraded		High speed rail / Completed		To be upgraded to high speed rail		Airports		Ports
	Conventional rail / Planned		High speed rail / Planned		RRT						

Changes to legislation: There are outstanding changes not yet made to Commission Delegated Regulation (EU) 2019/254. Any changes that have already been made to the legislation appear in the content and are referenced with annotations. (See end of Document for details) [View outstanding changes](#)



15.4 Indicative maps of the core network in the Republic of Armenia, roads Comprehensive & Core Networks: Roads, ports, rail-road terminals and airports Eastern Partnership Transport Network: Republic of Armenia

15



Comprehensive		Core		Comprehensive		Core		Comprehensive		Core	
Road / Completed	Road / To be upgraded	Road / Completed	Road / To be upgraded	Ports	Ports	RRT	RRT	Airports	Airports	Airports	Airports
Road / Planned	Road / Planned	Road / Planned	Road / Planned								

TENtec

- (2) in Section 15 (Republic of Armenia, Azerbaijan, Georgia) the following maps are added (15.5 and 15.6 concerning Azerbaijan):

Changes to legislation: There are outstanding changes not yet made to Commission Delegated Regulation (EU) 2019/254. Any changes that have already been made to the legislation appear in the content and are referenced with annotations. (See end of Document for details) [View outstanding changes](#)



15.5 Indicative maps of the core network in Azerbaijan, railways
 Comprehensive Network: Railways, ports, rail-road-terminals and airports
 Core Network: Railways, ports, rail-road-terminals and airports
 Eastern Partnership Transport Network: Azerbaijan



Comprehensive		Core		Comprehensive		Core	
Conventional rail / Completed	Conventional rail / To be upgraded	Conventional rail / Planned		High speed rail / Completed	To be upgraded to high speed rail	High speed rail / Planned	
				Airports	Ports	RRT	

Changes to legislation: There are outstanding changes not yet made to Commission Delegated Regulation (EU) 2019/254. Any changes that have already been made to the legislation appear in the content and are referenced with annotations. (See end of Document for details) View outstanding changes



- (3) in Section 15 (Republic of Armenia, Azerbaijan, Georgia) the following maps are added (15.7 and 15.8 concerning Georgia):

Changes to legislation: There are outstanding changes not yet made to Commission Delegated Regulation (EU) 2019/254. Any changes that have already been made to the legislation appear in the content and are referenced with annotations. (See end of Document for details) [View outstanding changes](#)



15.7 Indicative maps of the core network in Georgia, railways
 Comprehensive Network: Railways, ports, rail-road-terminals and airports
 Core Network: Railways, ports, rail-road-terminals and airports
 Eastern Partnership Transport Network: Georgia



Comprehensive		Core		Comprehensive		Core		Comprehensive		Core	
Conventional rail / Completed	Conventional rail / To be upgraded	Conventional rail / Completed	Conventional rail / To be upgraded	High speed rail / Completed	To be upgraded to high speed rail	High speed rail / Completed	To be upgraded to high speed rail	Airports	Ports	Airports	Ports
Conventional rail / Planned		High speed rail / Planned		High speed rail / Planned		High speed rail / Planned		RRT		RRT	

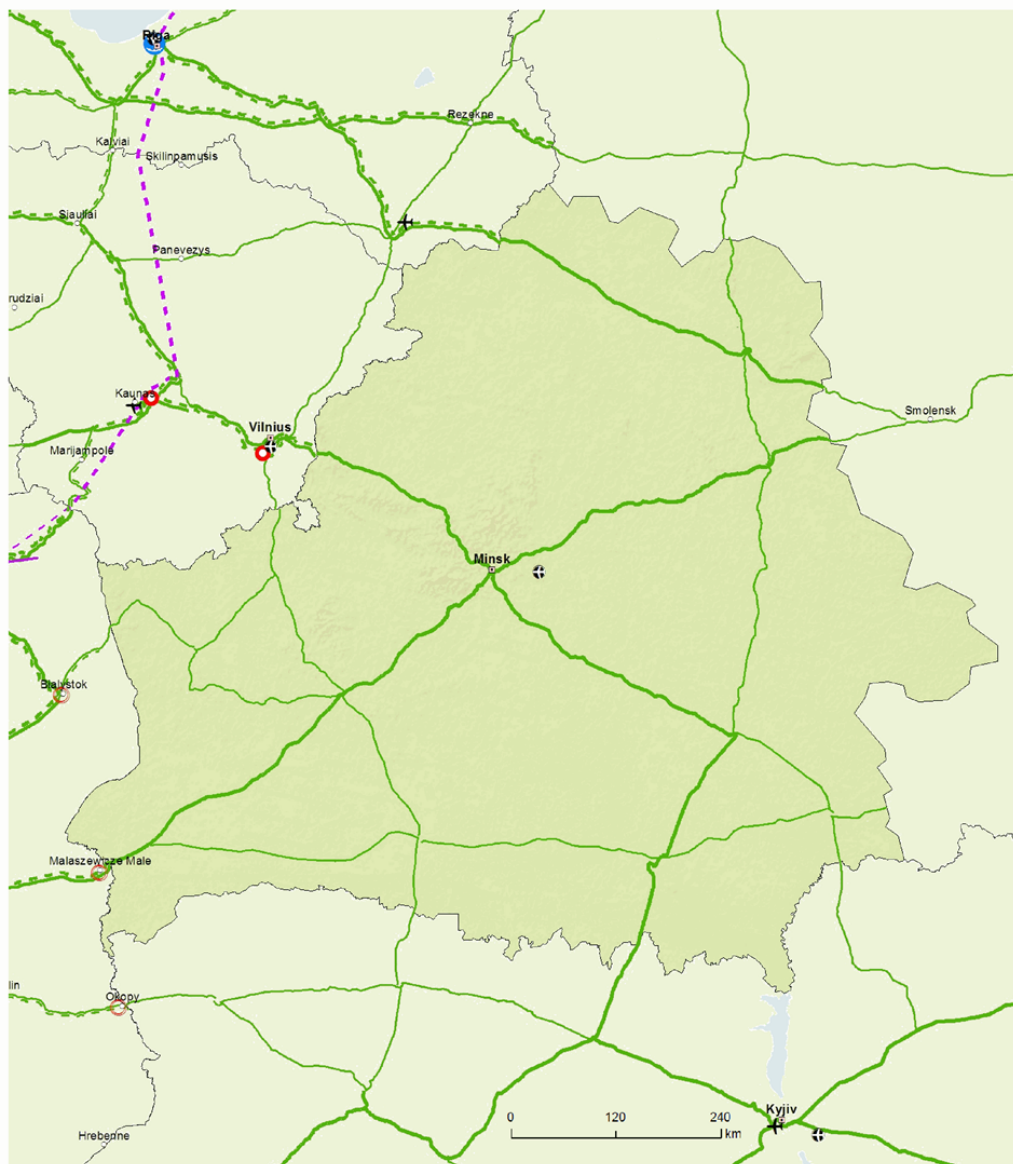
Changes to legislation: There are outstanding changes not yet made to Commission Delegated Regulation (EU) 2019/254. Any changes that have already been made to the legislation appear in the content and are referenced with annotations. (See end of Document for details) View outstanding changes



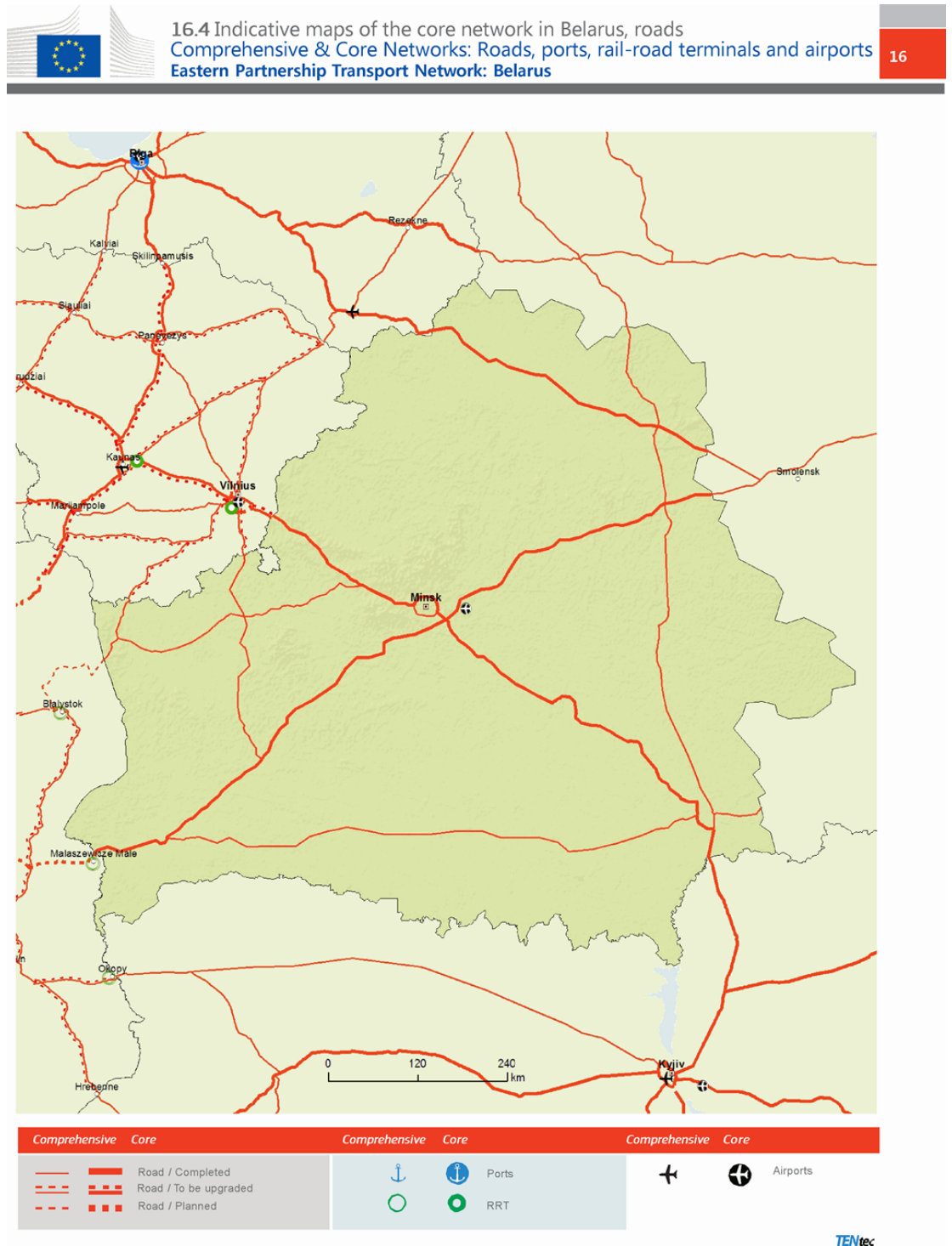
- (4) in Section 16 (Belarus, Republic of Moldova, Ukraine) the following maps are added (16.3 and 16.4 concerning Belarus):

Changes to legislation: There are outstanding changes not yet made to Commission Delegated Regulation (EU) 2019/254. Any changes that have already been made to the legislation appear in the content and are referenced with annotations. (See end of Document for details) [View outstanding changes](#)

16.3 Indicative maps of the core network in Belarus, railways
 Comprehensive Network: Railways, ports, rail-road-terminals and airports
 Core Network: Railways, ports, rail-road-terminals and airports
 Eastern Partnership Transport Network: Belarus

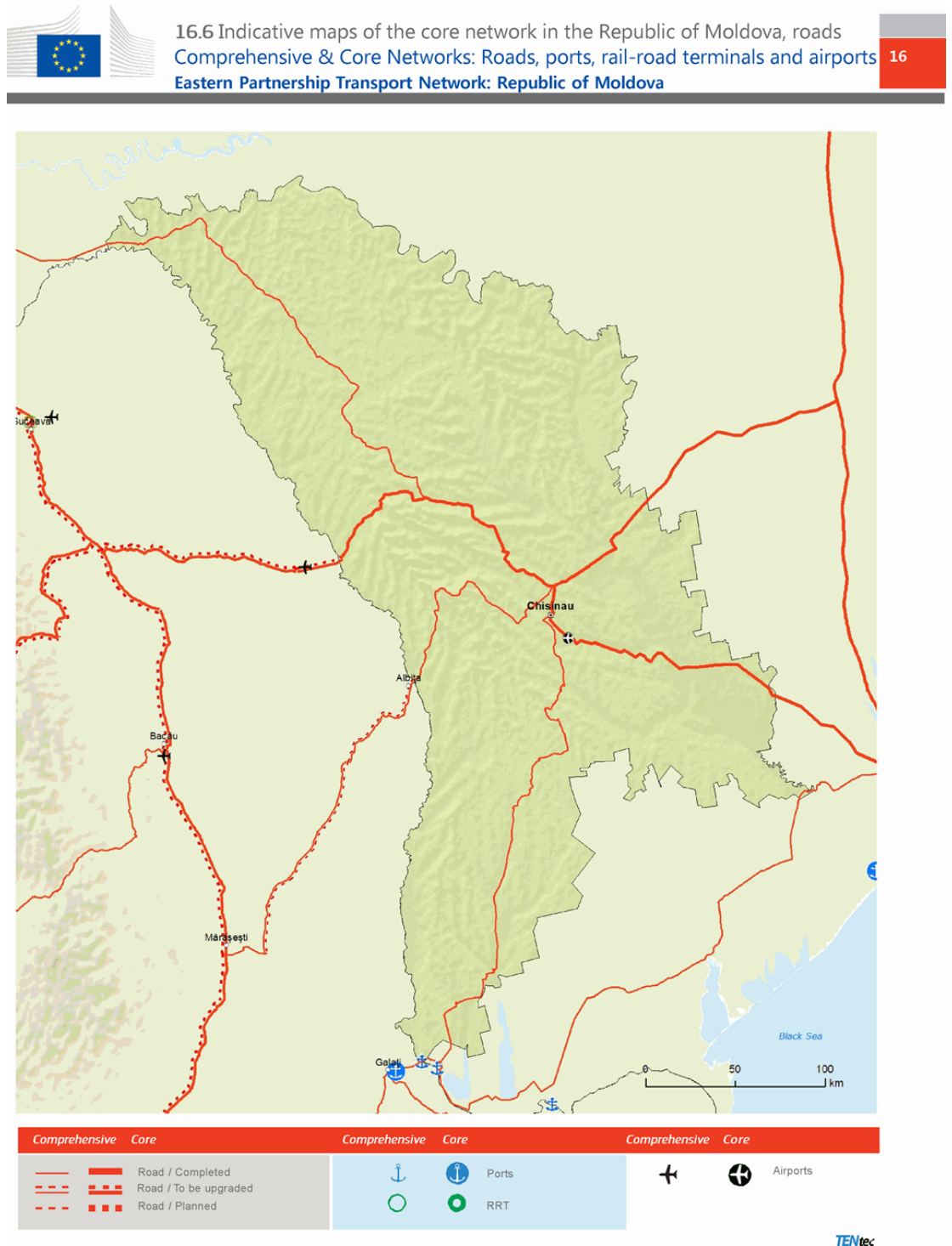


Changes to legislation: There are outstanding changes not yet made to Commission Delegated Regulation (EU) 2019/254. Any changes that have already been made to the legislation appear in the content and are referenced with annotations. (See end of Document for details) View outstanding changes



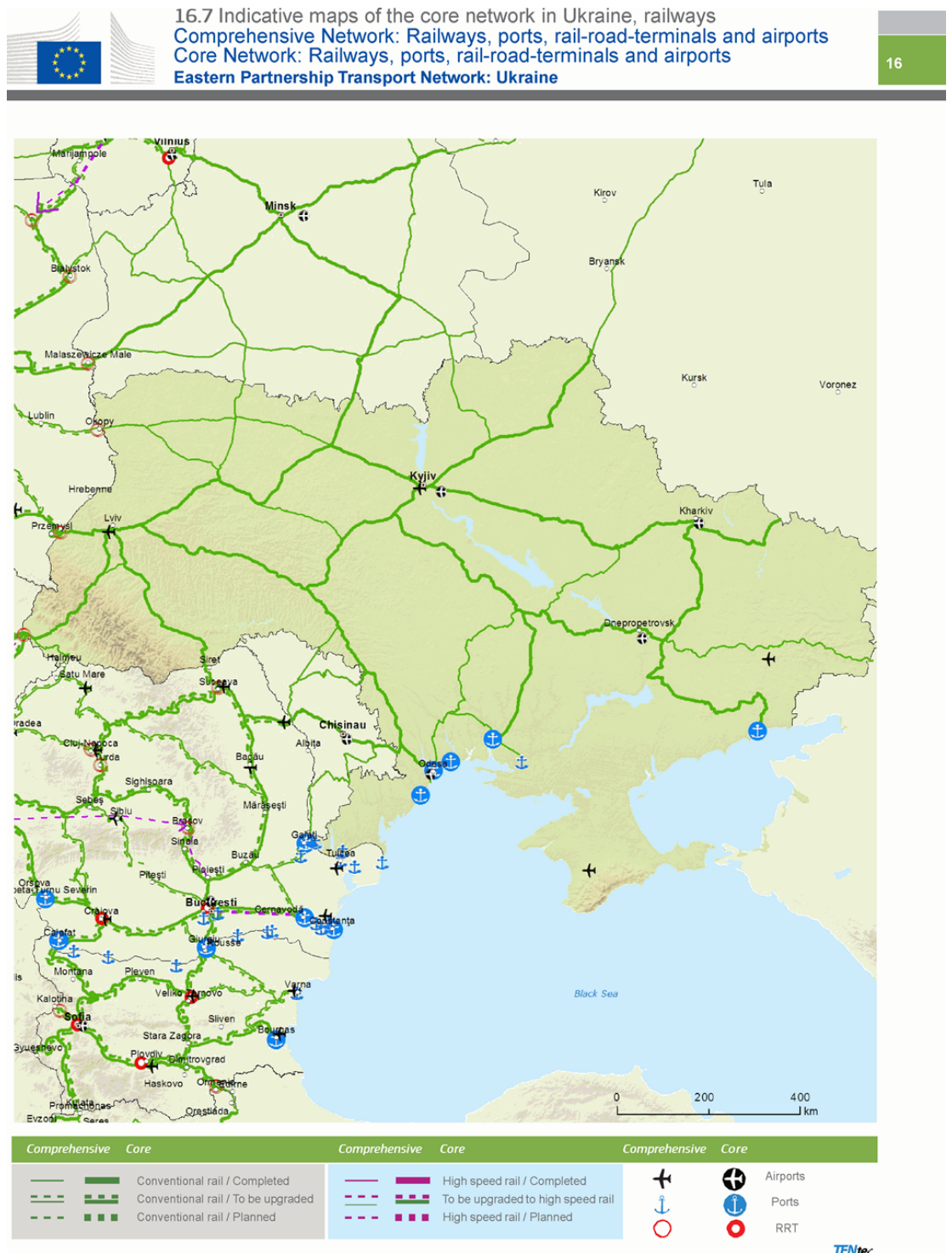
- (5) in Section 16 (Belarus, Republic of Moldova, Ukraine) the following maps are added (16.5 and 16.6 concerning the Republic of Moldova):

Changes to legislation: There are outstanding changes not yet made to Commission Delegated Regulation (EU) 2019/254. Any changes that have already been made to the legislation appear in the content and are referenced with annotations. (See end of Document for details) View outstanding changes

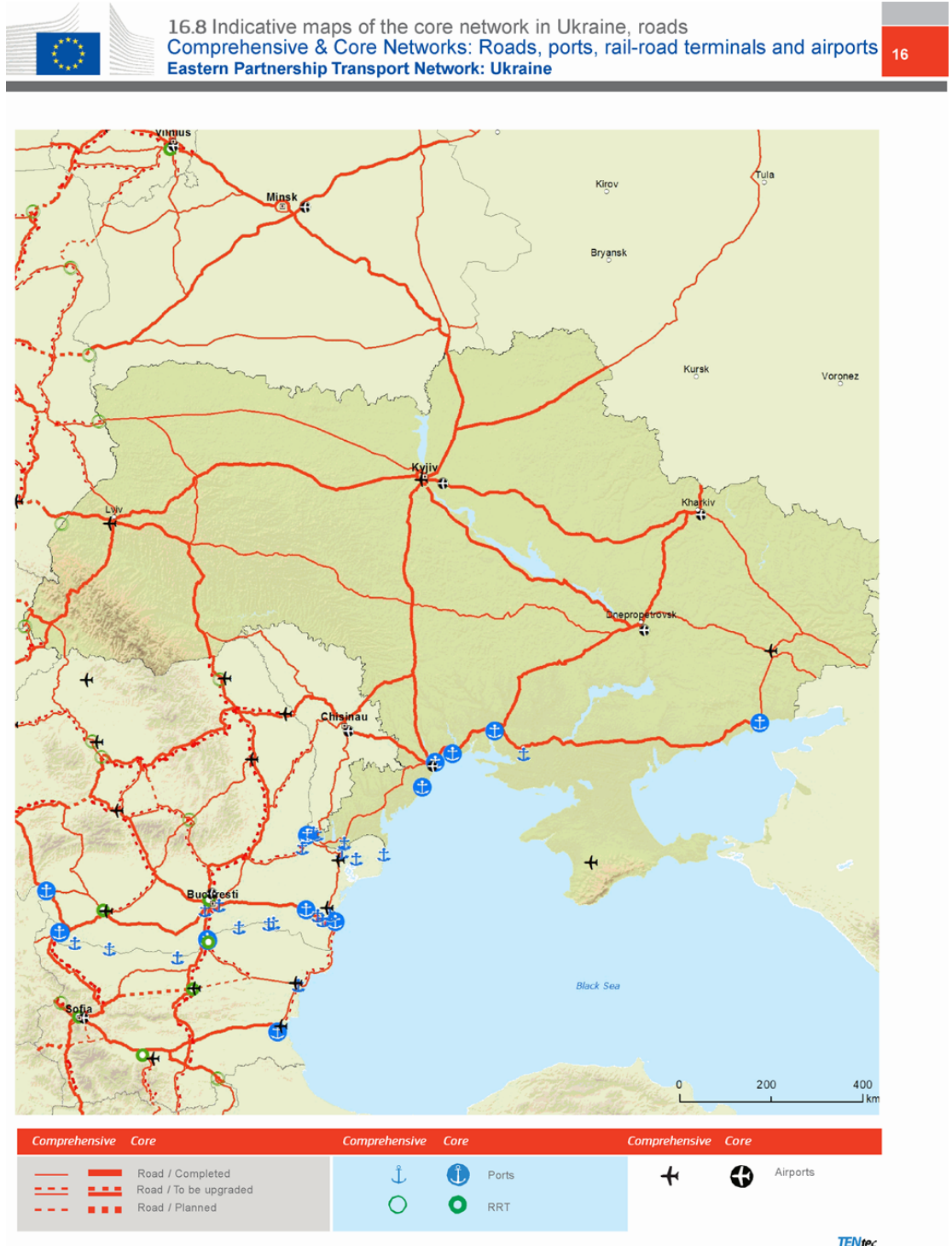


- (6) in Section 16 (Belarus, Republic of Moldova, Ukraine) the following maps are added (16.7 and 16.8 concerning Ukraine):

Changes to legislation: There are outstanding changes not yet made to Commission Delegated Regulation (EU) 2019/254. Any changes that have already been made to the legislation appear in the content and are referenced with annotations. (See end of Document for details) View outstanding changes



Changes to legislation: There are outstanding changes not yet made to Commission Delegated Regulation (EU) 2019/254. Any changes that have already been made to the legislation appear in the content and are referenced with annotations. (See end of Document for details) View outstanding changes



Changes to legislation: There are outstanding changes not yet made to Commission Delegated Regulation (EU) 2019/254. Any changes that have already been made to the legislation appear in the content and are referenced with annotations. (See end of Document for details) [View outstanding changes](#)

(1) [OJ L 348, 20.12.2013, p. 1.](#)

Changes to legislation:

There are outstanding changes not yet made to Commission Delegated Regulation (EU) 2019/254. Any changes that have already been made to the legislation appear in the content and are referenced with annotations.

[View outstanding changes](#)

Changes and effects yet to be applied to :

- Regulation revoked by [2023 c. 28 Sch. 1 Pt. 2](#)