

---

STATUTORY INSTRUMENTS

---

**1992 No. 3328**

**HIGHWAYS, ENGLAND AND WALES**

**The Borough Council of Sandwell (Black Country Spine Road) (Balls Hill Branch/Ridgacre Branch Canal Bridges) Scheme 1992 Confirmation Instrument 1992**

Made - - - - 22nd December  
1992

The Secretary of State for Transport makes this Instrument in exercise of powers conferred by sections 106(3) and 108(4) of the Highways Act 1980(1), and now vested in him(2), and of all other enabling powers:—

1. The Borough Council of Sandwell (Black Country Spine Road) (Balls Hill Branch/Ridgacre Branch Canal Bridges) Scheme 1992 is hereby confirmed without modifications.

2. The said Scheme as confirmed (hereinafter referred to as “the Scheme”) is set out in the schedule hereto and copies of the scheme with its accompanying plans are deposited at the offices of the Department of Transport, Romney House, 43 Marsham Street, London SW1P 3PY and at the offices of the Borough Council of Sandwell, Sandwell Council House, Oldbury, Warley, West Midlands.

3. The Scheme will become operative on the date on which notice that it has been confirmed is first published in accordance with paragraph 1 of schedule 2 to the Highways Act 1980.

4. This Instrument may be cited as the Borough Council of Sandwell (Black Country Spine Road) (Balls Hill Branch/Ridgacre Branch Canal Bridges) Scheme 1992 Confirmation Instrument 1992.

Signed by authority of the Secretary of State for Transport

22nd December 1992

*P. A. Shaw*  
Regional Director Northern Region  
Department of Transport

---

(1) 1980 c. 66.  
(2) SI 1981/238.

*Status: This is the original version (as it was originally made). This item of legislation is currently only available in its original format.*

THE SCHEDULE

SANDWELL METROPOLITAN BOROUGH COUNCIL THE BOROUGH COUNCIL OF SANDWELL (BLACK COUNTRY SPINE ROAD) (BALLS HILL BRANCH/RIDGACRE BRANCH CANAL BRIDGES) SCHEME 1992

The Borough Council of Sandwell (hereinafter referred to as “The Council”) make this scheme in exercise of their powers under sections 106(3) and 108(4) of the Highways Act 1980 and all other enabling powers:—

1. The Council are authorised to construct over the navigable waters of the Balls Hill Branch and Ridgacre Branch Canals the bridges specified in the schedule to the scheme as part of the highway to be known as The Black Country Spine Road which they are proposing to construct between Holyhead Road roundabout, Wednesbury and Carters Green, West Bromwich in the said Borough.
2. The Council are also authorised in connection with the construction of the said bridges to divert part of the navigable watercourse specified in the said schedule and the towing path adjacent to that part in the manner shown in that schedule.
3. This Scheme may be cited as the Borough Council of Sandwell (Black Country Spine Road) Balls Hill Branch/Ridgacre Branch Canal Bridges) Scheme 1992.

SCHEDULE

*LOCATION*

The two bridges will span the Balls Hill Branch Canal and The Ridgacre Branch Canal at the intersection of the said canals approximately 200 metres north east of Great Bridge Street Canal at Swan Village, West Bromwich in the Borough of Sandwell.

*DIMENSIONS*

---

<i>Span</i>	<i>— The minimum clear span of the bridge will be 14 metres and the minimum clear gap between bridges will be 5 metres</i>
<i>Waterway</i>	<i>— he minimum width of waterway will be 10 metres and a 2.5 metres towpath will be provided on the north western side with a 1.5 metres maintenance strip on the south eastern side</i>
<i>Headroom</i>	<i>— The minimum headroom under each bridge provided over the 10 metre width of waterway will be 2.6 metres above the British Waterways Board design level of 137.92 metres above ordnance datum</i>

---

*DIVERSION OF WATERCOURSE AND TOWPATH*

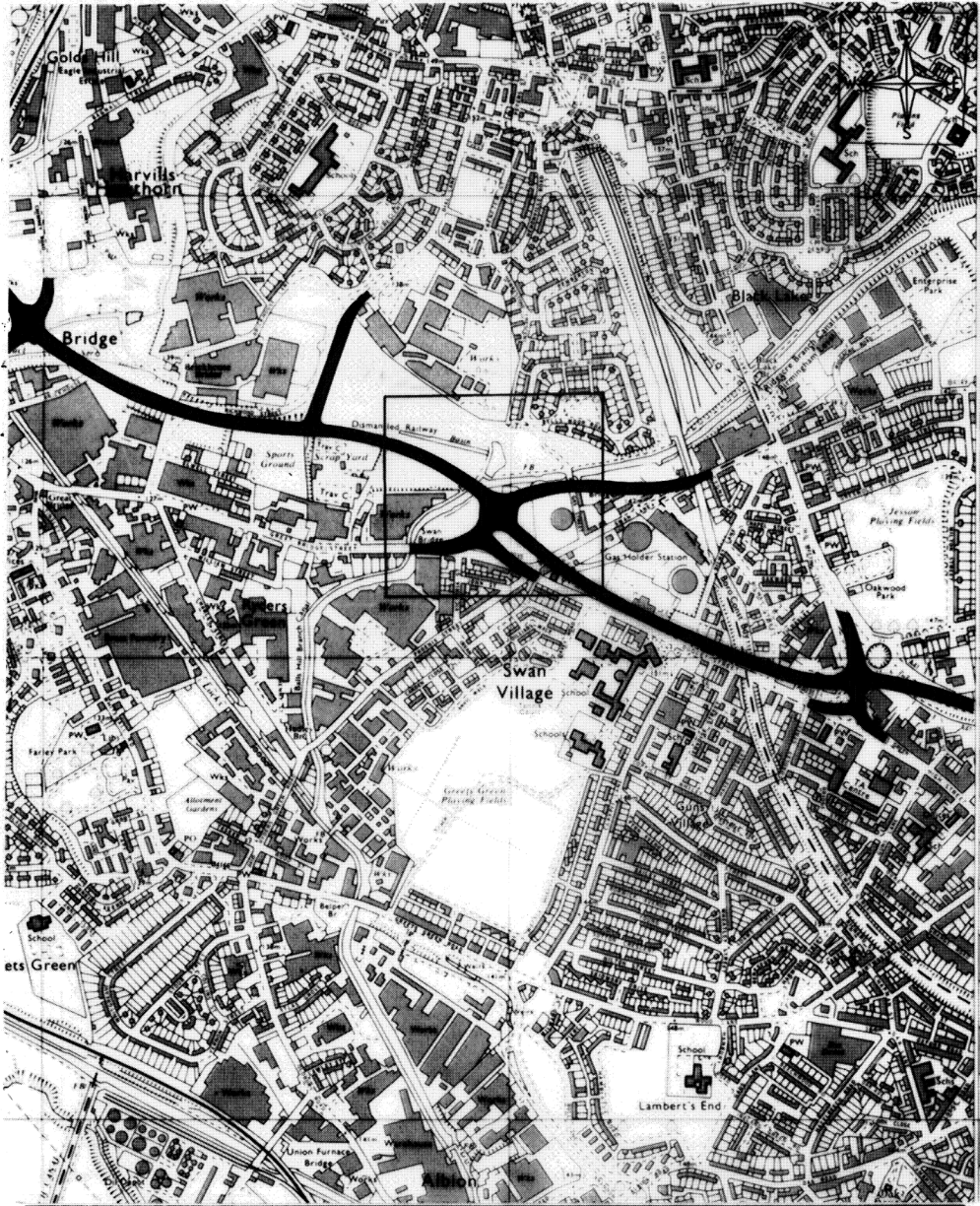
Balls Hill Branch Canal and Ridgacre Canal

*PARTICULARS OF DIVERSION*

The existing canal width varies between 16 metres and 30 metres approximately and will be reduced to a minimum width of 10 metres over a length of 70 metres approximately to facilitate the construction of the bridge.

The existing canal entrance into the turning area at the end of the canal basin will be closed and the footbridge removed. A new canal entrance will be constructed 35 metres approximately east of the existing entrance. A new footbridge will also be constructed over this new entrance to maintain the continuity of the towpath.

Status: This is the original version (as it was originally made). This item of legislation is currently only available in its original format.

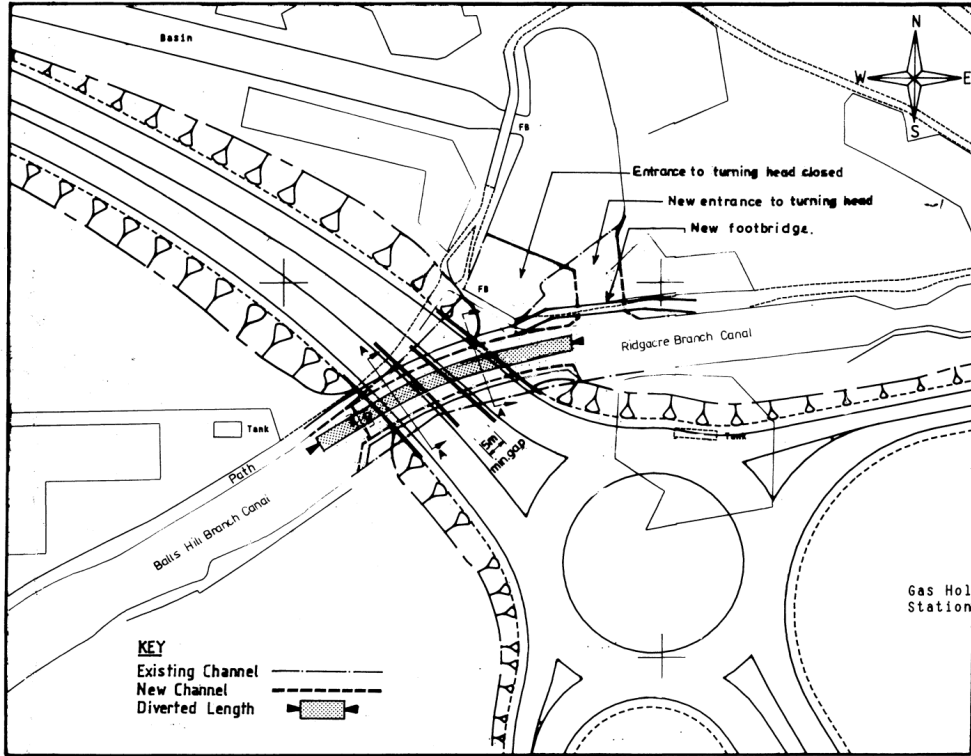


**BLACK COUNTRY SPINE ROAD  
BALLS HILL BRANCH / RIDGACRE BRANCH  
CANAL BRIDGES  
LOCATION PLAN**

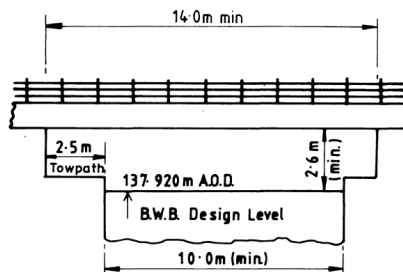
John T. Baker, B.Sc., C.Eng., M.I.C.E., M.I.M.T., Director of Technical and Development Services

SCALE	1:10000
DATE	FEBRUARY 1992
ISSUED BY	CHENGINEER
NEGATIVE No.	CH/200/470
DRAWING No.	CH/200/470/475
DRAWN BY	SJR

**Status:** This is the original version (as it was originally made). This item of legislation is currently only available in its original format.



**PLAN**  
Scale 1:1250



**SECTION A-A**  
Scale 1:200



**BLACK COUNTRY SPINE ROAD**  
**BALLS HILL BRANCH / RIDGACRE BRANCH**  
**CANAL BRIDGES**  
**PLAN AND SECTIONS**

John T. Baker, B.Sc., C.Eng., M.I.C.E., M.I.H.T. Director of Technical and Development Services

SCALE	AS SHOWN
DATE	FEBRUARY 2002
ISSUED BY	CHAMBERLIN
NEGATIVE No.	CH/200/504
DRAWING No.	CH/200/504/509
DRAWN BY	SJR

**Status:** This is the original version (as it was originally made). This item of legislation is currently only available in its original format.

The Common Seal of the Borough Council of Sandwell was hereunto affixed this 27 day of March 1992 in the presence of:—

L.S.

*S. J.Cork*  
Senior Assistant Borough Secretary