

---

STATUTORY INSTRUMENTS

---

**2006 No. 2531**

**HIGHWAYS, ENGLAND**

**The Cambridgeshire County Council (Construction  
of Cambridge Riverside Foot/Cycle Bridge)  
Scheme 2006 Confirmation Instrument 2006**

*Made - - - - 13th September 2006*

*Coming into force in accordance with article 1*

The Secretary of State for Transport makes this Instrument in exercise of powers conferred by section 106(3) of the Highways Act 1980(1) and now vested in him(2):

1. This Instrument may be cited as the Cambridgeshire County Council (Construction of Cambridge Riverside Foot/Cycle Bridge) Scheme 2006 Confirmation Instrument 2006 and shall come into force on the date on which notice that it has been confirmed is first published in accordance with paragraph 1 of Schedule 2 to the Highways Act 1980.

2. The Cambridgeshire County Council (Construction of Cambridge Riverside Foot/Cycle Bridge) Scheme 2006 (“the Scheme”) is hereby confirmed without modifications.

3. The Scheme as confirmed is set out in the Schedule hereto (including the plans) and copies of the Scheme with its accompanying plans are deposited at the offices of the Department for Transport, Floor 13 (IMD), Ashdown House, St Leonards on Sea, Hastings, East Sussex, TN37 7GA, and at the office of Cambridgeshire County Council at Shire Hall, Castle Hill, Cambridge CB3 0AP (Office of Environment and Community Services, Castle Court).

Signed by authority of the Secretary of State for Transport

13th September 2006

*J Blackie*  
Regional Director Government Office for the  
North East

---

(1) 1980 c. 66.  
(2) S.I.1981/238.

*Status: This is the original version (as it was originally made). This item of legislation is currently only available in its original format.*

## SCHEDULE

### THE CAMBRIDGESHIRE COUNTY COUNCIL (CONSTRUCTION OF CAMBRIDGE RIVERSIDE FOOT/CYCLE BRIDGE) SCHEME 2006

The Cambridgeshire County Council (hereinafter referred to as “the Council”) makes this Scheme in exercise of their powers under Section 106(3) of the Highways Act 1980 and of all other powers enabling them in that behalf:

1. The Council are authorised to construct over the navigable waters of the River Cam the bridge specified in the Schedule to the Scheme as part of the highway which they are proposing to construct between the Chesterton and Petersfield areas of Cambridge in the said County.
2. The Scheme may be cited as the Cambridgeshire County Council (Construction of Cambridge Riverside Foot/Cycle Bridge) Scheme 2006.

### THE SCHEDULE TO THE SCHEME

#### PLANS AND SPECIFICATION OF CAMBRIDGE RIVERSIDE FOOT/CYCLE BRIDGE

The location and general plan layout of Riverside Foot/Cycle Bridge are shown on the plan marked “The Cambridgeshire County Council (Construction of Cambridge Riverside Foot/Cycle Bridge) Scheme 2006”.

#### *POINTS OF COMMENCEMENT AND TERMINATION OF THE RIVER SPAN*

##### **Riverside Approach—Top of the East Abutment**

From a point on the east bank of the River Cam 115 metres south of the junction of Riverside and Stanley Road and 81.3 metres west (140 metres direct line point to point).

##### **St Andrews Approach—Top of the West Abutment**

To a point on the west bank of the River Cam 93.5 metres west of the junction of Riverside and Stanley Road and 85 metres south (126.4 metres direct line point to point).

##### **Navigation Span**

The bridge has a clear span of 32.5 metres (between abutments), spanning diagonally across the entire width of the River Cam (22.5 metres approx).

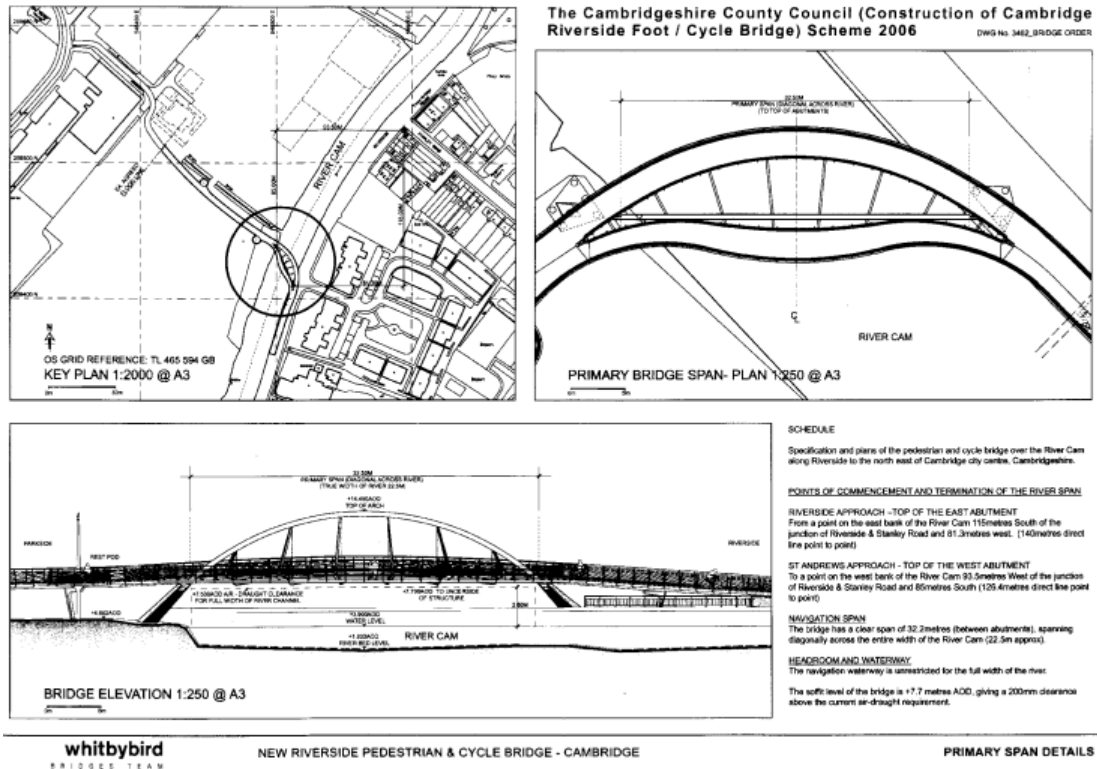
##### **Headroom and Waterway**

The navigation waterway is unrestricted for the full width of the river. The soffit level of the bridge is +7.7 metres AOD, giving a 200 mm clearance above the current air-draught requirement.

##### **Overall dimensions**

The bridge deck has an overall width of 4.4 metres and will carry a 1,300 mm wide footpath and 2,300 mm wide cycleway.

**Status:** This is the original version (as it was originally made). This item of legislation is currently only available in its original format.



Given under the common seal of the Council on the on the 30th day of January 2006  
THE COMMON SEAL of the COUNCIL was hereunto affixed in the presence of

L.S.

SENIOR SOLICITOR