
STATUTORY INSTRUMENTS

2013 No. 39

HIGHWAYS, ENGLAND

The County Council of Somerset (Bridgwater & Taunton Canal Bridge) Scheme 2011 Confirmation Instrument 2013

Made - - - - 10 January 2013

Coming into force in accordance with article 1

The Secretary of State for Transport makes this Instrument in exercise of powers conferred by section 106(3) of the Highways Act 1980⁽¹⁾ and now vested in the Secretary of State⁽²⁾:

1. This Instrument may be cited as “The County Council of Somerset (Bridgwater & Taunton Canal Bridge) Scheme 2011 Confirmation Instrument 2013” and shall come into force on the date on which notice that it has been confirmed is first published in accordance with paragraph 1 of Schedule 2 to the Highways Act 1980.

2. The County Council of Somerset (Bridgwater & Taunton Canal Bridge) Scheme 2011 Confirmation Instrument 2013 (“the Scheme”) is hereby confirmed with modifications.

3. The Scheme as confirmed is set out in the Schedule hereto (including the plans) and copies of the Scheme with its accompanying plans as modified are deposited at the offices of the Department for Transport, Floor 13 (IMD), Ashdown House, St Leonards on Sea, Hastings, East Sussex, TN37 7GA, and at the offices of Somerset County Council at County Hall, Taunton, Somerset TA1 4DY.

Signed by authority of the Secretary of State for Transport

10 January 2013

M R Fawcett
A Senior Civil Servant in the
Department for Transport

(1) 1980 c.66.
(2) S.I. 1981/238.

Status: This is the original version (as it was originally made). This item of legislation is currently only available in its original format.

THE SCHEDULE

Article 3

THE COUNTY COUNCIL OF SOMERSET

HIGHWAYS ACT 1980

THE COUNTY COUNCIL OF SOMERSET (BRIDGWATER
& TAUNTON CANAL BRIDGE) SCHEME 2011

The County Council of Somerset (“the Council”) make this Scheme in exercise of their powers under Section 106(3) of the Highways Act 1980 and of all other powers enabling them in that behalf:-

1. The Council are authorised to construct over the navigable waters of the Bridgwater & Taunton Canal the bridge specified in the Schedule to this Scheme as part of the highway they are proposing to construct and improve between A3027 Staplegrove Road and A3038 Priory Bridge Road in the Borough of Taunton in the said County.

2. This Scheme may be cited as The County Council of Somerset (Bridgwater & Taunton Canal Bridge) Scheme 2011.

Given under the Common Seal of the County Council of Somerset on the 24th day of May 2011

THE COMMON SEAL of the Council of the County of Somerset was hereunto affixed in the presence of:-

Deputy County Solicitor

THE SCHEDULE
TO THE SCHEME

Article 3

Plans and Specifications of the Bridgwater & Taunton Canal

The location and general design of the Bridge are shown on the plans numbered 1 and 2 marked “The County Council of Somerset (Bridgwater & Taunton Canal Bridge) Scheme 2011”.

Points of Commencement and Termination

From a point on the south bank of the River Tone in Taunton, 220 metres east of Firepool Lock. The River Tone is non-navigable at this point.

To a point on the north bank of the Bridgwater & Taunton Canal in Taunton 200 metres south-west of the Winkworth Way.

Span

Three span bridge. Central span of 43.0 metres and end spans of 33.0 metres (109.0 metres overall length of bridge).

Headway

Not less than 6.05 metres above an assumed water level of 12.84 metres AOD, not less than 5.4 metres above the footway/cycleway which runs alongside the south bank of the River Tone, not less than 4.2 metres above the footway/cycleway which runs alongside the south bank of the Bridgwater

& Taunton Canal, and not less than 3.2 metres above the private track, which runs along the north bank of the Bridgwater & Taunton Canal.

Waterway

Existing minimum clear navigable waterway to be maintained (approximately 5 metres).

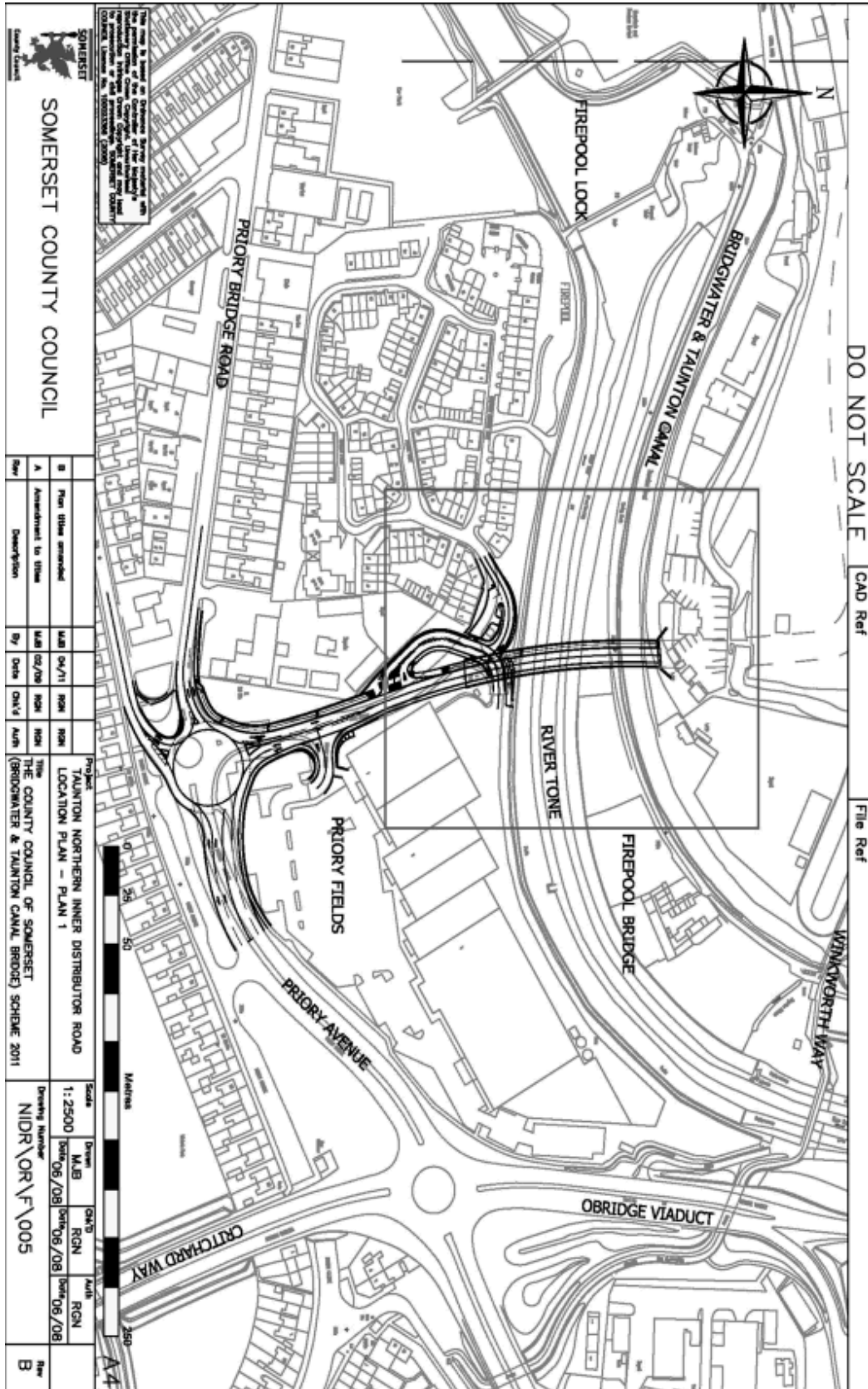
Overall Dimensions

The Bridge will carry 1 footway/cycleway, 1 footway and a single two lane carriageway.

The bridge will be 13.8 metres wide overall and will carry a 7.3 metres wide carriageway with a 3.5 metre wide footway/cycleway on the west side and a 2.0 metre wide footway on the east side.

The vehicle incursion protection/parapets and edge beams make up the remainder of the bridge width.

Status: This is the original version (as it was originally made). This item of legislation is currently only available in its original format.



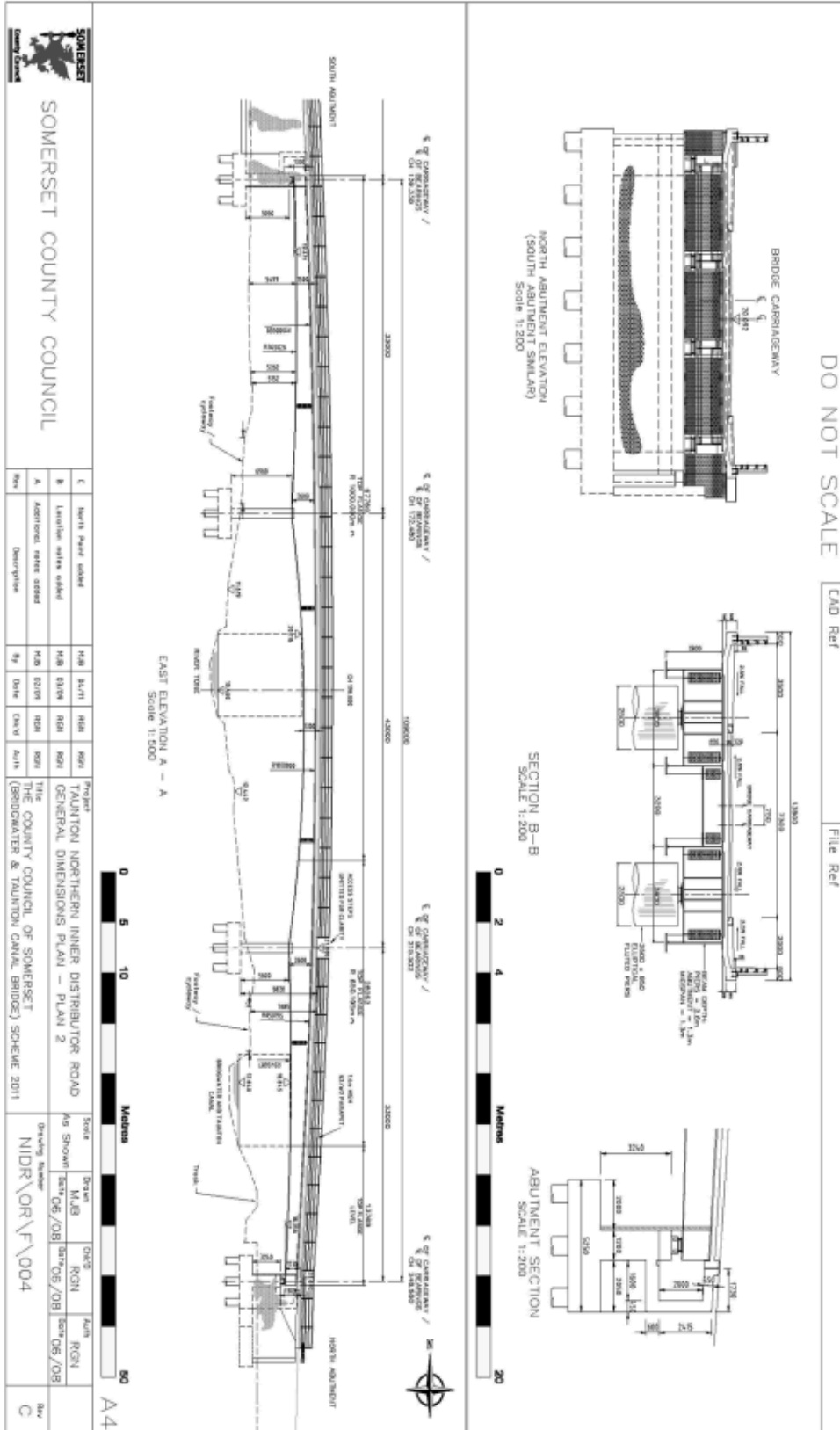
SOMERSET COUNTY COUNCIL

Rev	Description	By	Date	Auth	Project	Scale	Drawn	Chk'd	Auth	Rev
B	Plan title amended	MAB	04/11	RCN	Project: TAUNTON NORTHERN INNER DISTRIBUTOR ROAD LOCATION PLAN - PLAN 1	1:2500	MAB	Chk'd	RCN	A
A	Amendment to title	MAB	02/08	RCN			THE COUNTY COUNCIL OF SOMERSET (BROADWATER & TAUNTON CANAL BRIDGE) SCHEME 2011	MAB	Chk'd	

This plan is based on Ordnance Survey information and is not intended to be used for any purpose other than that for which it was prepared. It is not to be used for any purpose other than that for which it was prepared. It is not to be used for any purpose other than that for which it was prepared.

DO NOT SCALE CAD Ref File Ref

Status: This is the original version (as it was originally made). This item of legislation is currently only available in its original format.



Status: This is the original version (as it was originally made). This item of legislation is currently only available in its original format.

EXPLANATORY NOTE

(This note is not part of the Instrument)

This instrument confirms a scheme to construct over the navigable waters of the Bridgwater & Taunton Canal the bridge specified in the Schedule to this Scheme as part of the highway they are proposing to construct and improve between A3027 Staplegrove Road and A3038 Priory Bridge Road in the Borough of Taunton in the said County.

The Secretary of State has modified this Bridge Scheme by adding the Schedule.