

---

*Status: Point in time view as at 01/06/2015.*

*Changes to legislation: There are currently no known outstanding effects for the Council Regulation (EC) No 1967/2006. (See end of Document for details)*

---

Council Regulation (EC) No 1967/2006 of 21 December 2006 concerning management measures for the sustainable exploitation of fishery resources in the Mediterranean Sea, amending Regulation (EEC) No 2847/93 and repealing Regulation (EC) No 1626/94

*Status: Point in time view as at 01/06/2015.*

*Changes to legislation: There are currently no known outstanding effects for the Council Regulation (EC) No 1967/2006. (See end of Document for details)*

## [<sup>X1</sup>ANNEX I

### Technical conditions for attachments to and rigging of trawl nets

#### Editorial Information

- X1** Substituted by [Corrigendum to Council Regulation \(EC\) No 1967/2006 of 21 December 2006 concerning management measures for the sustainable exploitation of fishery resources in the Mediterranean Sea, amending Regulation \(EEC\) No 2847/93 and repealing Regulation \(EC\) No 1626/94 \(Official Journal of the European Union L 409 of 30 December 2006\)](#).

#### Definitions

For the purposes of this Annex:

- (a) ‘multiple twine netting’ means netting constructed of two or more twines, where the twines can be separated between the knots without damage to the twine structure;
- (b) ‘knotless netting’ means netting which is composed of meshes of four sides of approximately equal length in which the corners of the meshes are formed by the interweaving of the twines of two adjacent sides of the mesh;
- (c) ‘square-meshed netting’ means a construction of netting mounted so that of the two sets of parallel lines formed by the mesh bars, one set is parallel to and the other at right angles to the long axis of the net;
- (d) ‘the trawl body’ means the tapered section in the front part of a trawl net;
- (e) ‘the extension piece’ means the untapered section, made of one or more panels, between the trawl body and the cod-end;
- (f) ‘the cod-end’ means the rearmost part of a trawl net, of net of the same mesh size, having either a cylindrical or a tapering shape, whose transversal cross-sections are nearly a circle of the same or decreasing radius respectively;
- (g) ‘balloon cod-end’ means any cod-end composed of one or more adjoining panels, of net of the same mesh size, whose number of meshes increases going to the rearmost part of the gear causing an extension of the transversal length, with respect to the longitudinal axis of the net, and of the circumference of the cod-end;
- (h) ‘pocket type cod-end’ means any cod-end whose vertical height diminishes towards the rearmost part of the cod-end and whose transversal cross-sections are nearly an ellipse of the same or decreasing major axis. The rearmost part of the cod-end is either composed by a single folded panel or by transversally lacing together, with respect to the longitudinal axis of the net, the rearmost upper and lower panels;
- (i) ‘transversal lacing rope’ means any external or internal rope running transversally, with respect to the longitudinal axis of the net, in the rearmost part of the cod-end either along the join between two upper and lower panels or along the bend of the single rearmost panel. It can be either a prolongation of the lateral lacing rope or a separate rope;
- (j) ‘circumference-perimeter’ of any cross section in a diamond mesh netting of a trawl net shall be calculated as the number of meshes in that cross section multiplied by the stretched mesh size;

---

*Status: Point in time view as at 01/06/2015.*

*Changes to legislation: There are currently no known outstanding effects for the Council Regulation (EC) No 1967/2006. (See end of Document for details)*

---

- (k) 'circumference-perimeter' of any cross section in a square mesh netting of a trawl net shall be calculated as the number of meshes in that cross section multiplied by the mesh side length.
- (A) Authorised attachments to trawl nets
1. Notwithstanding Article 8 of Regulation (EEC) No 3440/84 either a transversal, with respect to the longitudinal axis of the net, or lengthways zip-fastener mechanical device may be used to close the opening for emptying the pocket-type cod-end.
  2. The transversal zip-fastener shall be attached at a distance which is not more than 1 metre from the rear meshes of the cod-end.
- (B) Rigging requirements
1. A balloon cod-end shall be prohibited in trawl nets. Within any single cod-end the number of equal sized meshes around any circumference of the cod-end shall not increase from the front end to the rear end.
  2. The circumference of the rearmost part of the trawl body (the tapered section) or of the extension piece (the untapered section) shall not be smaller than the circumference of the front end of the cod-end *sensu stricto*. In the case of a square mesh cod-end, in particular, the circumference of the rearmost part of the trawl body or of the extension piece shall be from two to four times the circumference of the front end of the cod-end *sensu stricto*.
  3. Square mesh panels may be inserted into any towed net and shall be placed in front of any extension piece or at any point between the front of any extension piece and the posterior of the cod-end. It shall not be obstructed in any way by either internal or external attachments. It shall be constructed of knotless netting or of netting constructed with non-slip knots, and shall be inserted in such a way that the meshes remain fully open at all times while fishing. Detailed rules for further technical specifications of square mesh panels shall be adopted in accordance with the procedure laid down in Article 29 of this Regulation.
  4. Analogously, technical devices with a view of improving selectivity of trawl nets, other than that referred to in point (b) 3, may be authorised in accordance with the procedure referred to in Article 29 of this Regulation.
  5. The carrying on board or the use of any towed net the cod-end of which is constructed wholly or in part of any type of netting material made of meshes other than square mesh or diamond mesh shall be prohibited unless authorised in accordance with the procedure referred to in Article 29 of this Regulation.
  6. Paragraphs 4 and 5 shall not apply to any boat seine the cod-end of which has a mesh size smaller than 10 mm.
  7. By way of modification of Article 6(4) of Regulation (EEC) No 3440/84 the mesh size of the strengthening bag shall not be less than 120 mm for bottom trawlers if the cod-end mesh is smaller than 60 mm. This provision shall apply only to the Mediterranean Sea and shall be without prejudice to other [F<sup>1</sup>Union] waters. If the cod-end mesh size is equal to or greater than 60 mm then Article 6(4) of Regulation (EEC) No 3440/84 shall apply.

*Status: Point in time view as at 01/06/2015.*

*Changes to legislation: There are currently no known outstanding effects for the Council Regulation (EC) No 1967/2006. (See end of Document for details)*

### Textual Amendments

**F1** Substituted by Regulation (EU) 2015/812 of the European Parliament and of the Council of 20 May 2015 amending Council Regulations (EC) No 850/98, (EC) No 2187/2005, (EC) No 1967/2006, (EC) No 1098/2007, (EC) No 254/2002, (EC) No 2347/2002 and (EC) No 1224/2009, and Regulations (EU) No 1379/2013 and (EU) No 1380/2013 of the European Parliament and of the Council, as regards the landing obligation, and repealing Council Regulation (EC) No 1434/98.

8. The pocket type cod-end shall not have more than one opening to empty.
9. The length of the transversal lacing rope shall be not less than 20 % of the circumference of the cod-end.
10. The circumference of the strengthening bag, as defined in Article 6 of Regulation No 3440/84, shall not be less than 1,3 times that of the cod-end for bottom trawl nets.
11. The carrying on board or the use of any towed net constructed wholly or in part in the cod-end of single twine netting materials having a twine thickness of more than 3,0 millimetres shall be prohibited.
12. The carrying on board or the use of any towed net constructed wholly or in part in the cod-end of netting materials consisting of multiple twines shall be prohibited.
13. Netting materials having a twine thickness greater than 6 mm shall be prohibited in any part of a bottom trawl net.

## ANNEX II

### Requirements relating to the characteristics of fishing gear

#### Definitions

For the purposes of this Annex:

- (a) the length of nets shall be defined by the length of the float line. The length of bottom-set and drifting nets may be also defined on the basis of the weight or volume of its mass;
- (b) the drop of nets shall be defined as the sum of the height of the meshes (including knots) when wet and stretched perpendicular to the float line.

#### 1. Dredges

The maximum breadth of dredges shall be 3 m, except in the case of dredges for sponge fishing.

#### 2. Surrounding nets (purse seines and seines without purse lines)

[<sup>x2</sup>The length of net shall be restricted to] 800 m and the drop to 120 m, except in the case of tuna seines.

*Status: Point in time view as at 01/06/2015.*

*Changes to legislation: There are currently no known outstanding effects for the Council Regulation (EC) No 1967/2006. (See end of Document for details)*

### Editorial Information

- X2** Substituted by [Corrigendum to Council Regulation \(EC\) No 1967/2006 of 21 December 2006 concerning management measures for the sustainable exploitation of fishery resources in the Mediterranean Sea, amending Regulation \(EEC\) No 2847/93 and repealing Regulation \(EC\) No 1626/94 \(Official Journal of the European Union L 409 of 30 December 2006 — corrected version in Official Journal of the European Union L 36 of 8 February 2007\)](#).

3. Bottom-set nets
  - 3.1. Trammel nets and bottom-set gillnets
    1. The maximum drop of a trammel net shall not exceed 4 m.
    2. The maximum drop of a bottom-set gillnet shall not exceed 10 m.
    3. It shall be prohibited to have on board or set more than 6 000 m of trammel net, bottom-set gillnet per vessel, taking into account that, as from January 2008, in the case of a single fisherman, such nets may not exceed 4 000 metres, to which a further 1 000 metres may be added for a second fisherman and another 1 000 metres for a third one. Until 31 December 2007 such nets shall not exceed 5 000 metres in the case of single or a second fisherman and 6 000 metres for a third one.
    4. Monofilament or twine diameter of the bottom-set gillnet shall not exceed 0,5mm.
    5. By way of derogation from paragraph 2, a bottom-set gillnet of maximum length shorter than 500 m may have a maximum drop up to 30 m. It shall be prohibited to have on board or set more than 500 m of bottom-set gillnet when it exceeds the drop limit of 10 m as established in paragraph 2.
  - 3.2. Combined bottom-set nets (trammel nets plus gillnets)
    1. The maximum drop of a combined bottom-set net shall not exceed 10 m.
    2. It shall be prohibited to have on board or set more than 2 500 m of combined nets per vessel.
    3. Monofilament or twine diameter of the gillnet shall not exceed 0,5 mm.
    4. By way of derogation from paragraph 1, a combined bottom-set net of maximum length of 500 m may have a maximum drop of 30 m. It shall be prohibited to have on board or set more than 500 m of combined bottom-set when it exceeds the drop limit of 10 m as established in paragraph 1.
  4. Bottom-set longline
    1. It shall be prohibited to have on board or set more than 1 000 hooks per person on board within the overall limit of 5 000 hooks per vessel.
    2. By way of derogation from paragraph 1 each vessel undertaking fishing trips longer than three days may have on board a maximum number of 7 000 hooks.
  5. Traps for deep-water crustacean fishery

It shall be prohibited to have on board or set more than 250 traps per vessel.
  6. Surface-set longline (floating)

*Status: Point in time view as at 01/06/2015.*

*Changes to legislation: There are currently no known outstanding effects for the Council Regulation (EC) No 1967/2006. (See end of Document for details)*

It shall be prohibited to have on board or set more than:

1. 2 000 hooks per vessel for vessels targeting bluefin tuna (*Thunnus thynnus*) where this species account for at least 70 % of the catch in live weight after sorting;
2. 3 500 hooks for vessels targeting swordfish (*Xyphias gladius*) where this species account for at least 70 % of the catch in live weight after sorting;
3. 5 000 hooks per vessel for vessels targeting albacore (*Thunnus alalunga*) where this species account for at least 70 % of the catch in live weight after sorting;
4. By way of derogation from subparagraphs 1, 2 and 3 each vessel undertaking fishing trips longer than two days may have on board an equivalent number of spare hooks.
7. Trawl nets

Technical specifications limiting the maximum dimension of floatline, groundrope, circumference or perimeter of trawl nets along with the maximum number of nets in multi-rig trawl nets shall be adopted, by October 2007, in accordance with the procedure laid down in Article 30 of this Regulation.

### ANNEX III

#### [<sup>F1</sup>Minimum conservation reference sizes]

Scientific name	Common name	[ <sup>F1</sup> Minimum conservation reference size]
1. Fishes		
<i>Dicentrarchus labrax</i>	Sea bass	25 cm
<i>Diplodus annularis</i>	Annular sea bream	12 cm
<i>Diplodus puntazzo</i>	Sharpsnout sea bream	18 cm
<i>Diplodus sargus</i>	White sea bream	23 cm
<i>Diplodus vulgaris</i>	Two-banded sea bream	18 cm
<i>Engraulis encrasicolus</i> <sup>a</sup>	European anchovy	9 cm
<i>Epinephelus</i> spp.	Groupers	45 cm
<i>Lithognathus mormyrus</i>	Stripped sea bream	20 cm
<i>Merluccius merluccius</i> <sup>c</sup>	Hake	20 cm
<i>Mullus</i> spp.	Red mullet	11 cm

**a** Anchovy: Member States may convert the [<sup>F1</sup>minimum conservation reference size] into 110 specimens per kg;

**b** Sardine: Member States may convert the [<sup>F1</sup>minimum conservation reference size] into 55 specimens per kg;

**c** Hake: Nevertheless, until 31 December 2008 a margin of tolerance of 15 % of weight will be permitted for hake between 15 and 20 cm. This tolerance limit shall be complied with by both individual vessels, at sea or at the place of landing, and at the markets of first sale after landing. This limit shall also be complied with in any subsequent commercial transaction at national and international level.

TL = total length; CL = carapace length.

**Status:** Point in time view as at 01/06/2015.

**Changes to legislation:** There are currently no known outstanding effects for the Council Regulation (EC) No 1967/2006. (See end of Document for details)

<i>Pagellus acarne</i>	Spanish sea bream	17 cm
<i>Pagellus bogaraveo</i>	Red sea bream	33 cm
<i>Pagellus erythrinus</i>	Common pandora	15 cm
<i>Pagrus pagrus</i>	Common sea bream	18 cm
<i>Polyprion americanus</i>	Wreckfish	45 cm
<i>Sardina pilchardus</i> <sup>b</sup>	European sardine	11 cm
<i>Scomber</i> spp.	Mackerel	18 cm
<i>Solea vulgaris</i>	Common sole	20 cm
<i>Sparus aurata</i>	Gilt-head sea bream	20 cm
<i>Trachurus</i> spp.	Horse mackerel, scad	15 cm
2. Crustaceans		
<i>Homarus gammarus</i>	Lobster	300 mm TL105 mm CL
<i>Nephrops norvegicus</i>	Norway lobster	20 mm CL70 mm TL
<i>Palinuridae</i>	Crawfish	90 mm CL
<i>Parapenaeus longirostris</i>	Deep-water rose shrimp	20 mm CL
3. Mollusc bivalves		
<i>Pecten jacobeus</i>	Scallop	10 cm
<i>Venerupis</i> spp.	Carpet clams	25 mm
<i>Venus</i> spp.	Venus shells	25 mm
<b>a</b>	Anchovy: Member States may convert the [ <sup>F1</sup> minimum conservation reference size] into 110 specimens per kg;	
<b>b</b>	Sardine: Member States may convert the [ <sup>F1</sup> minimum conservation reference size] into 55 specimens per kg;	
<b>c</b>	Hake: Nevertheless, until 31 December 2008 a margin of tolerance of 15 % of weight will be permitted for hake between 15 and 20 cm. This tolerance limit shall be complied with by both individual vessels, at sea or at the place of landing, and at the markets of first sale after landing. This limit shall also be complied with in any subsequent commercial transaction at national and international level.	
TL = total length; CL = carapace length.		

## ANNEX IV

### Measurement of the size of a marine organism

1. The size of any fish shall be measured, as shown in Figure 1, from the tip of the snout to the end of the tail fin.
2. The size of a Norway lobster (*Nephrops norvegicus*) shall be measured as shown in Figure 2:
  - either as the length of the carapace, parallel to the midline, from the back of either eye socket to the midpoint of the distal dorsal edge of the carapace, or,

*Status: Point in time view as at 01/06/2015.*

*Changes to legislation: There are currently no known outstanding effects for the Council Regulation (EC) N o 1967/2006. (See end of Document for details)*

- as the total length, from the tip of the rostrum to the rear end of the telson, not including the setae.
- 3. The size of a lobster (*Homarus gammarus*) shall be measured as shown in Figure 3:
  - either as the length of the carapace, parallel to the midline, from the back of either eye socket to the midpoint of the distal dorsal edge of the carapace, or,
  - as the total length, from the tip of the rostrum to the rear end of the telson, not including the setae.
- 4. The size of a crawfish (Palinuridae) shall be measured as shown in Figure 4 as the length of the carapace, parallel to the midline, from the tip of the rostrum to the midpoint of the distal dorsal edge of the carapace.
- 5. The size of any bivalve mollusc shall be measured as shown in Figure 5, across the longest part of the shell.

Figure 1

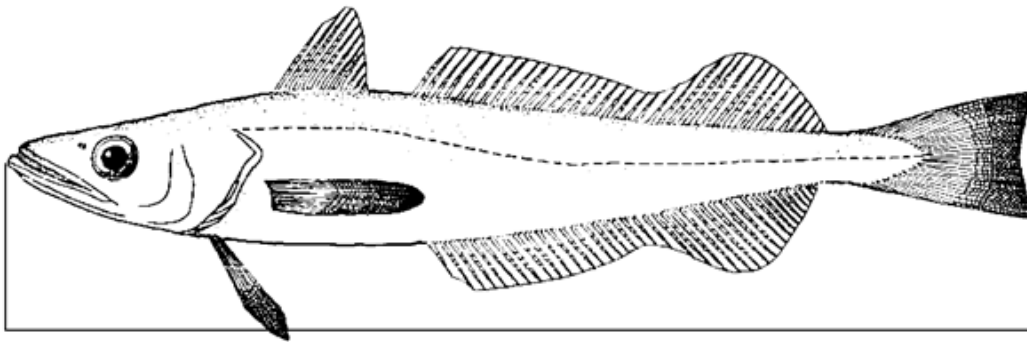


Figure 2

Figure 3



*Status: Point in time view as at 01/06/2015.*

*Changes to legislation: There are currently no known outstanding effects for the Council Regulation (EC) N o 1967/2006. (See end of Document for details)*

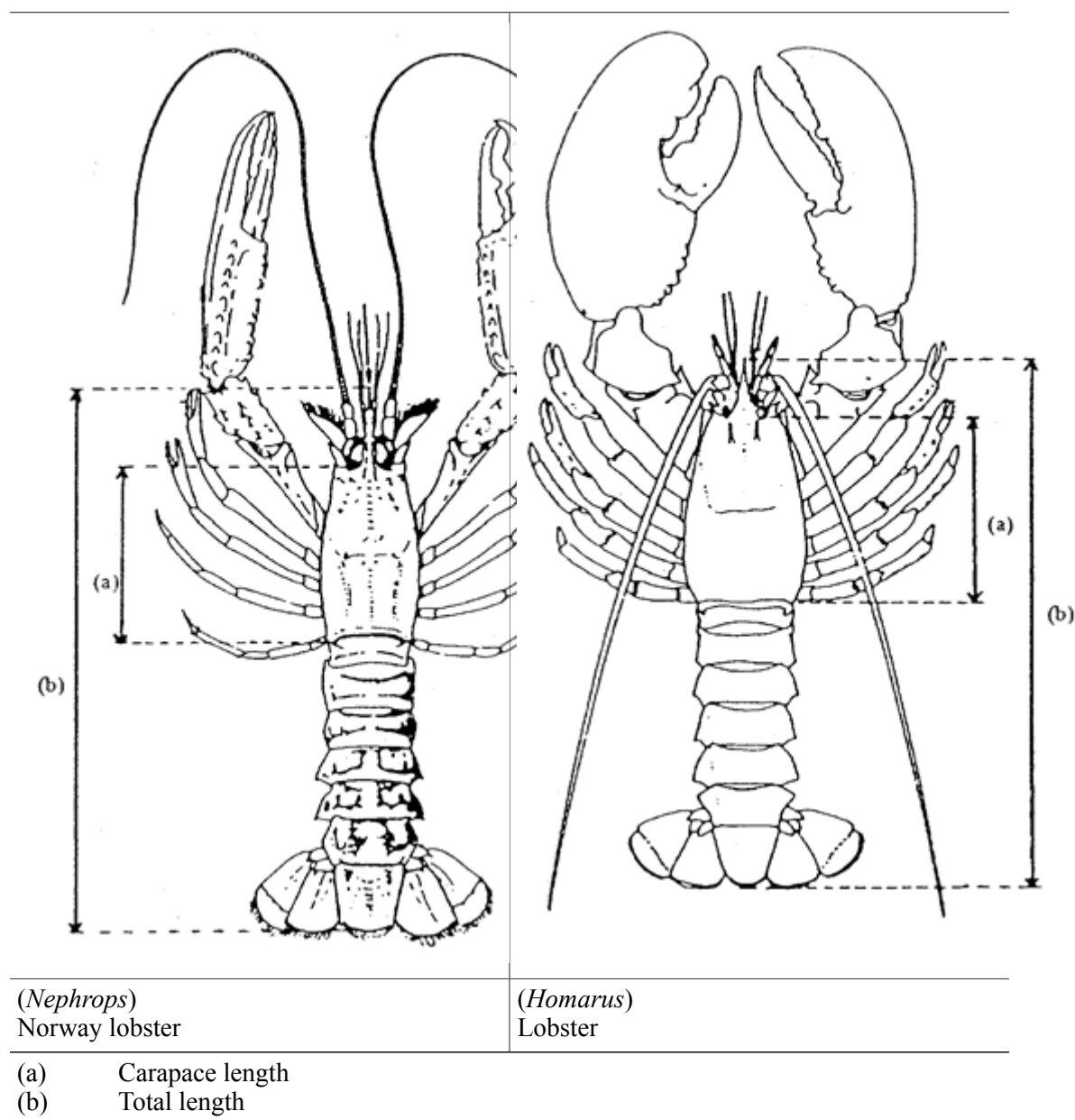


Figure 4

*Status: Point in time view as at 01/06/2015.*

*Changes to legislation: There are currently no known outstanding effects for the Council Regulation (EC) N o 1967/2006. (See end of Document for details)*

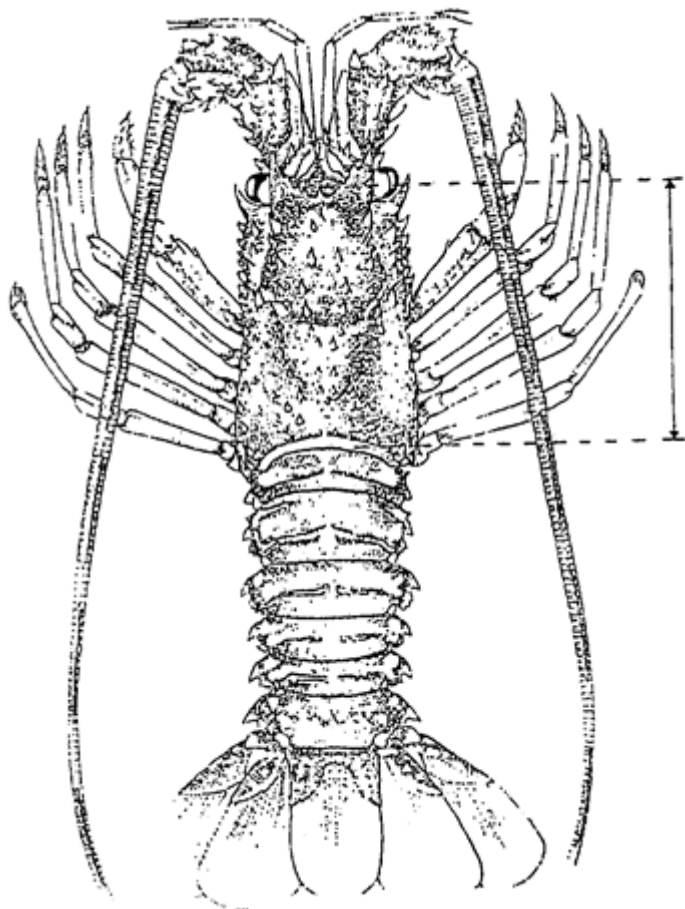
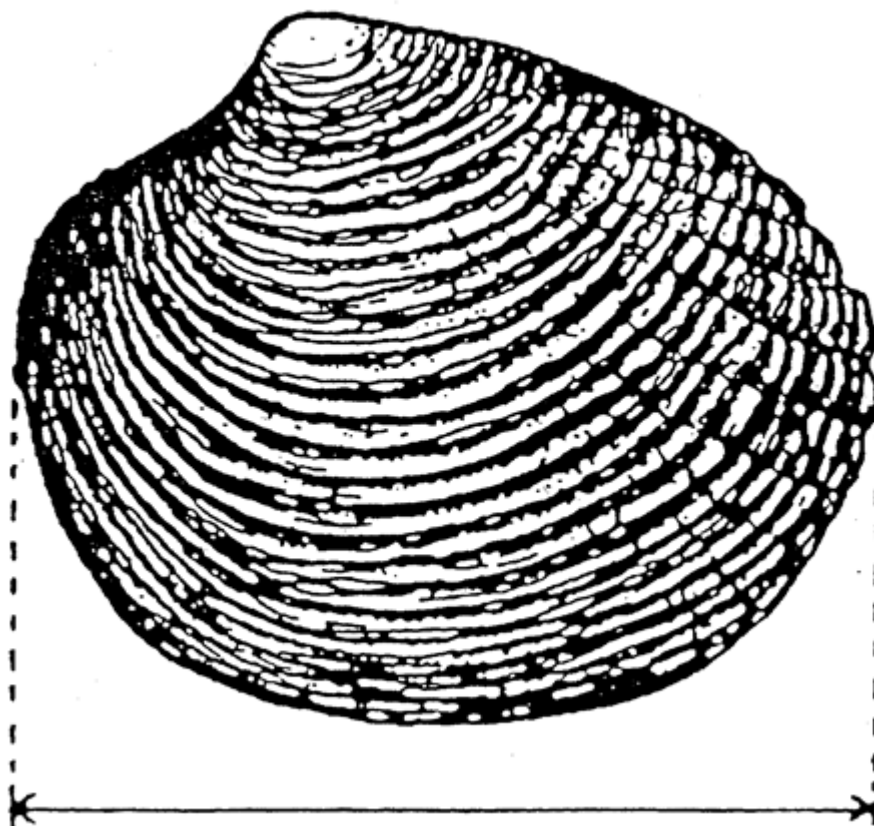


Figure 5

*Status: Point in time view as at 01/06/2015.*

*Changes to legislation: There are currently no known outstanding effects for the Council Regulation (EC) N o 1967/2006. (See end of Document for details)*



## ANNEX V

### 25-mile management zone around Maltese Islands

(a) Authorised trawlable areas to the approaches of the Maltese islands: geographic coordinates

Zone A	Zone H
A1 — 36,0172°N, 4,1442°E	H1 — 35,6739°N, 14,6742°E
A2 — 36,0289°N, 14,1792°E	H2 — 35,4656°N, 14,8459°E
A3 — 35,9822°N, 14,2742°E	H3 — 35,4272°N, 14,7609°E
A4 — 35,8489°N, 14,3242°E	H4 — 35,5106°N, 14,6325°E
A5 — 35,8106°N, 14,2542°E	H5 — 35,6406°N, 14,6025°E
A6 — 35,9706°N, 14,2459°E	
Zone B	Zone I
B1 — 35,7906°N, 14,4409°E	I1 — 36,1489°N, 14,3909°E
B2 — 35,8039°N, 14,4909°E	I2 — 36,2523°N, 14,5092°E

*Status: Point in time view as at 01/06/2015.*

*Changes to legislation: There are currently no known outstanding effects for the Council Regulation (EC) No 1967/2006. (See end of Document for details)*

B3 — 35,7939°N, 14,4959°E	I3 — 36,2373°N, 14,5259°E
B4 — 35,7522°N, 14,4242°E	I4 — 36,1372°N, 14,4225°E
B5 — 35,7606°N, 14,4159°E	
B6 — 35,7706°N, 14,4325°E	
Zone C	Zone J
C1 — 35,8406°N, 14,6192°E	J1 — 36,2189°N, 13,9108°E
C2 — 35,8556°N, 14,6692°E	J2 — 36,2689°N, 14,0708°E
C3 — 35,8322°N, 14,6542°E	J3 — 36,2472°N, 14,0708°E
C4 — 35,8022°N, 14,5775°E	J4 — 36,1972°N, 13,9225°E
Zone D	Zone K
D1 — 36,0422°N, 14,3459°E	K1 — 35,9739°N, 14,0242°E
D2 — 36,0289°N, 14,4625°E	K2 — 36,0022°N, 14,0408°E
D3 — 35,9989°N, 14,4559°E	K3 — 36,0656°N, 13,9692°E
D4 — 36,0289°N, 14,3409°E	K4 — 36,1356°N, 13,8575°E
	K5 — 36,0456°N, 13,9242°E
Zone E	Zone L
E1 — 35,9789°N, 14,7159°E	L1 — 35,9856°N, 14,1075°E
E2 — 36,0072°N, 14,8159°E	L2 — 35,9956°N, 14,1158°E
E3 — 35,9389°N, 14,7575°E	L3 — 35,9572°N, 14,0325°E
E4 — 35,8939°N, 14,6075°E	L4 — 35,9622°N, 13,9408°E
E5 — 35,9056°N, 14,5992°E	
Zone F	Zone M
F1 — 36,1423°N, 14,6725°E	M1 — 36,4856°N, 14,3292°E
F2 — 36,1439°N, 14,7892°E	M2 — 36,4639°N, 14,4342°E
F3 — 36,0139°N, 14,7892°E	M3 — 36,3606°N, 14,4875°E
F4 — 36,0039°N, 14,6142°E	M4 — 36,3423°N, 14,4242°E
	M5 — 36,4156°N, 14,4208°E
Zone G	Zone N
G1 — 36,0706°N, 14,9375°E	N1 — 36,1155°N, 14,1217°E
G2 — 35,9372°N, 15,0°E	N2 — 36,1079°N, 14,0779°E

*Status: Point in time view as at 01/06/2015.*

*Changes to legislation: There are currently no known outstanding effects for the Council Regulation (EC) No 1967/2006. (See end of Document for details)*

G3 — 35,7956°N, 14,9825°E	N3 — 36,0717°N, 14,0264°E
G4 — 35,7156°N, 14,8792°E	N4 — 36,0458°N, 14,0376°E
G5 — 35,8489°N, 14,6825°E	N5 — 36,0516°N, 14,0896°E
	N6 — 36,0989°N, 14,1355°E

(b) Geographic coordinates of some way-points along the 200m isobath within the 25-mile management zone

<b>ID</b>	<b>Latitude</b>	<b>Longitude</b>
1	36,3673°N	14,554°E
2	36,3159°N	14,5567°E
3	36,2735°N	14,5379°E
4	36,2357°N	14,4785°E
5	36,1699°N	14,4316°E
6	36,1307°N	14,3534°E
7	36,1117°N	14,2127°E
8	36,1003°N	14,1658°E
9	36,0859°N	14,152°E
10	36,0547°N	14,143°E
11	35,9921°N	14,1584°E
12	35,9744°N	14,1815°E
13	35,9608°N	14,2235°E
14	35,9296°N	14,2164°E
15	35,8983°N	14,2328°E
16	35,867°N	14,4929°E
17	35,8358°N	14,2845°E
18	35,8191°N	14,2753°E
19	35,7863°N	14,3534°E
20	35,7542°N	14,4316°E
21	35,7355°N	14,4473°E
22	35,7225°N	14,5098°E

*Status: Point in time view as at 01/06/2015.*

*Changes to legislation: There are currently no known outstanding effects for the Council Regulation (EC) No 1967/2006. (See end of Document for details)*

23	35,6951°N	14,5365°E
24	35,6325°N	14,536°E
25	35,57°N	14,5221°E
26	35,5348°N	14,588°E
27	35,5037°N	14,6192°E
28	35,5128°N	14,6349°E
29	35,57°N	14,6717°E
30	35,5975°N	14,647°E
31	35,5903°N	14,6036°E
32	35,6034°N	14,574°E
33	35,6532°N	14,5535°E
34	35,6726°N	14,5723°E
35	35,6668°N	14,5937°E
36	35,6618°N	14,6424°E
37	35,653°N	14,6661°E
38	35,57°N	14,6853°E
39	35,5294°N	14,713°E
40	35,5071°N	14,7443°E
41	35,4878°N	14,7834°E
42	35,4929°N	14,8247°E
43	35,4762°N	14,8246°E
44	36,2077°N	13,947°E
45	36,1954°N	13,96°E
46	36,1773°N	13,947°E
47	36,1848°N	13,9313°E
48	36,1954°N	13,925°E
49	35,4592°N	14,1815°E
50	35,4762°N	14,1895°E
51	35,4755°N	14,2127°E
52	35,4605°N	14,2199°E

*Status: Point in time view as at 01/06/2015.*

*Changes to legislation: There are currently no known outstanding effects for the Council Regulation (EC) No 1967/2006. (See end of Document for details)*

53	35,4453°N	14,1971°E
----	-----------	-----------

## ANNEX VI

### CORRELATION TABLE

<b>Regulation (EC) No 1626/94</b>	<b>Present Regulation</b>
Article 1(1)	Article 1(1)
Article 1(2) first subparagraph	Article 7, Article 17 and Article 19
Article 1(2) second subparagraph	Article 3
Article 2(1) and (2)	Article 8
Article 2(3)	Article 13(5), Article 17 and Article 19
Article 3(1) first subparagraph	Article 13(1) first subparagraph and (5)
Article 3(1) second subparagraph	Article 13(5), Article 14(2) and (3), Article 19
Article 3(1) third (1a) subparagraph	Article 4, Article 13(9), Article 13(10), Article 19
Article 3(2)	Article 13(1) second subparagraph and (8) and Article 19
Article 3(3)	Article 4, Article 13(10) and Article 19
Article 3(4)	Article 13(3) and (7) and Article 19
Article 4	Article 7
Article 5	Article 12 and Annex II
Article 6(1) first subparagraph and Article 6(2)	Article 9(1) and (2)
Article 6(1) second subparagraph	Article 9(7), Article 14(1) and (3)
Article 6(3)	Annex II Definitions
Article 7	Article 22
Article 8(1) and (3)	Article 15, Annex III and Annex IV
Article 8a	Article 26
Article 8b	Article 27
Article 9	Article 1(2)
Article 10a	Article 29
Article 11	Article 32
Annex I	Article 3 and Article 4
Annex II	Article 11, Annex I and Annex II

---

*Status: Point in time view as at 01/06/2015.*

*Changes to legislation: There are currently no known outstanding effects for the Council Regulation (EC) N o 1967/2006. (See end of Document for details)*

---

Annex III	Article 9(3), (4) and (5)
Annex IV	Annex III
Annex V(b)	Annex VI



**Status:**

Point in time view as at 01/06/2015.

**Changes to legislation:**

There are currently no known outstanding effects for the Council Regulation (EC) N o 1967/2006.