

II

(Non-legislative acts)

REGULATIONS

COMMISSION DELEGATED REGULATION (EU) No 473/2014

of 17 January 2014

amending Regulation (EU) No 1315/2013 of the European Parliament and of the Council as regards supplementing Annex III thereto with new indicative maps

(Text with EEA relevance)

THE EUROPEAN COMMISSION,

Having regard to the Treaty on the Functioning of the European Union,

Having regard to Regulation (EU) No 1315/2013 of the European Parliament and of the Council of 11 December 2013 on Union guidelines for the development of the trans-European transport network and repealing Decision No 661/2010/EU ⁽¹⁾, and in particular Article 49(6) thereof,

Whereas:

- (1) Regulation (EU) No 1315/2013 provides for the possibility to add indicative maps of the trans-European transport network extended to specific neighbouring countries based on high-level agreements on transport infrastructure networks between the Union and the neighbouring countries concerned.
- (2) A high-level agreement between the Union, Russia and Belarus has been reached in the framework of the Northern Dimension Partnership on Transport and Logistics (NDPTL) on 21 November 2012. A high level agreement between the Union and Belarus, Ukraine, Moldova, Georgia, Armenia and Azerbaijan has been reached in the framework of the Eastern Partnership on 9 October 2013.
- (3) Adding indicative maps of the transport networks, connected to the networks defined in Regulation (EU) No 1315/2013, would allow to better target the Union cooperation with the third countries in question.
- (4) The high-level agreements with the neighbouring countries concern the lines of the railway and road networks, as well as the ports, airports and rail-road terminals. The status of the railways and roads in terms of completion of the infrastructure was not part of the agreements. Therefore, the railways and roads were presented in the context of the high-level agreements as 'completed',

HAS ADOPTED THIS REGULATION:

Article 1

Annex III to Regulation (EU) No 1315/2013 is amended in accordance with the Annex to this Delegated Regulation.

⁽¹⁾ OJ L 348, 20.12.2013, p. 1.

Article 2

This Regulation shall enter into force on the twentieth day following that of its publication in the *Official Journal of the European Union*.

This Regulation shall be binding in its entirety and directly applicable in all Member States.

Done at Brussels, 17 January 2014.

For the Commission

The President

José Manuel BARROSO

ANNEX

Annex III to Regulation (EU) No 1315/2013 is amended as follows:

- (1) The map under the heading 'Map Finder Chart for Neighbouring Countries' is replaced by the following:

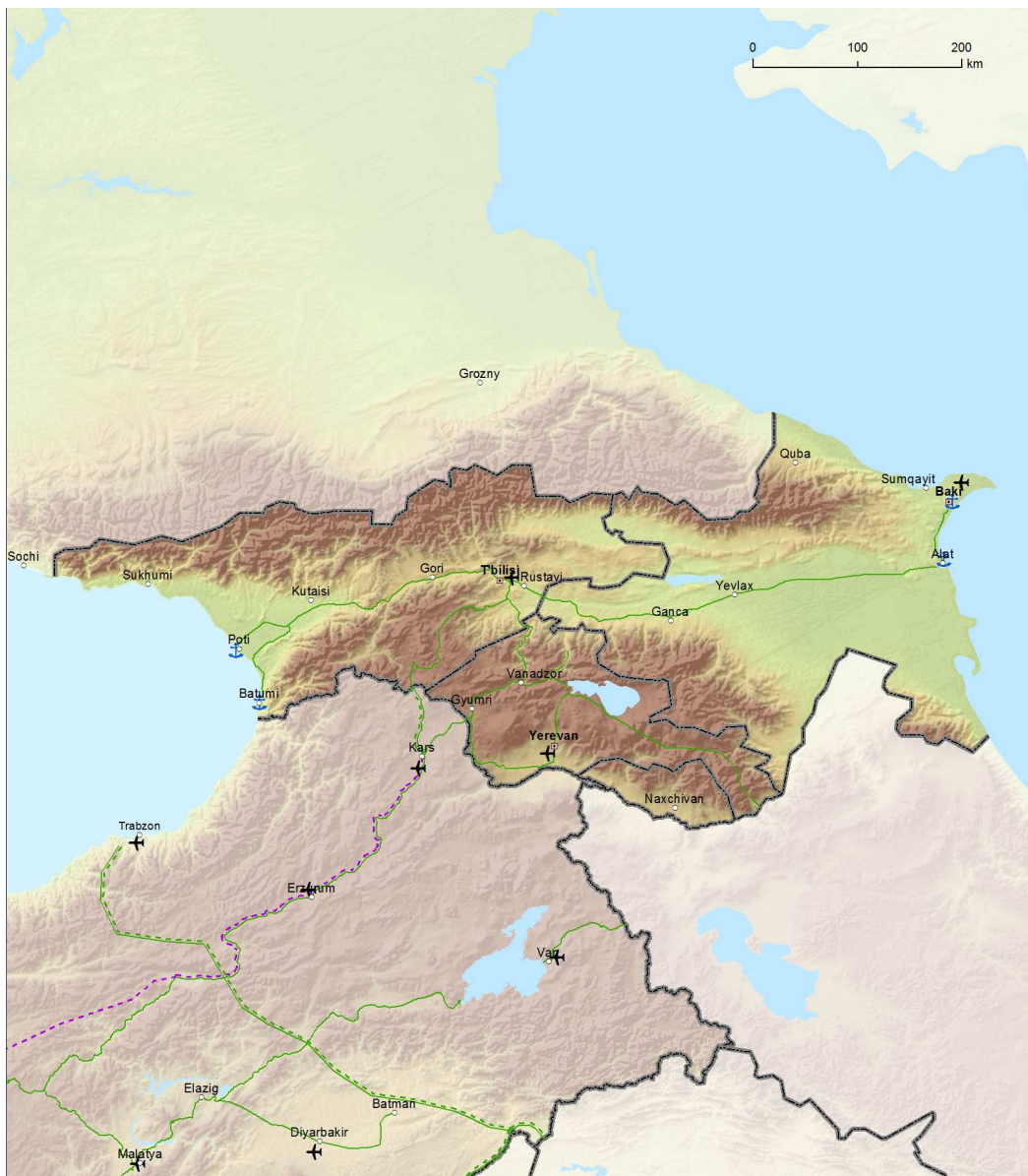


(2) The following maps 15.1 to 17.2 are added:



15.1. Indicative Extension to Neighbouring Countries
 Comprehensive Network: Railways, ports, rail-road terminals and airports
 Eastern Partnership Transport Network: Armenia, Azerbaijan, Georgia

15

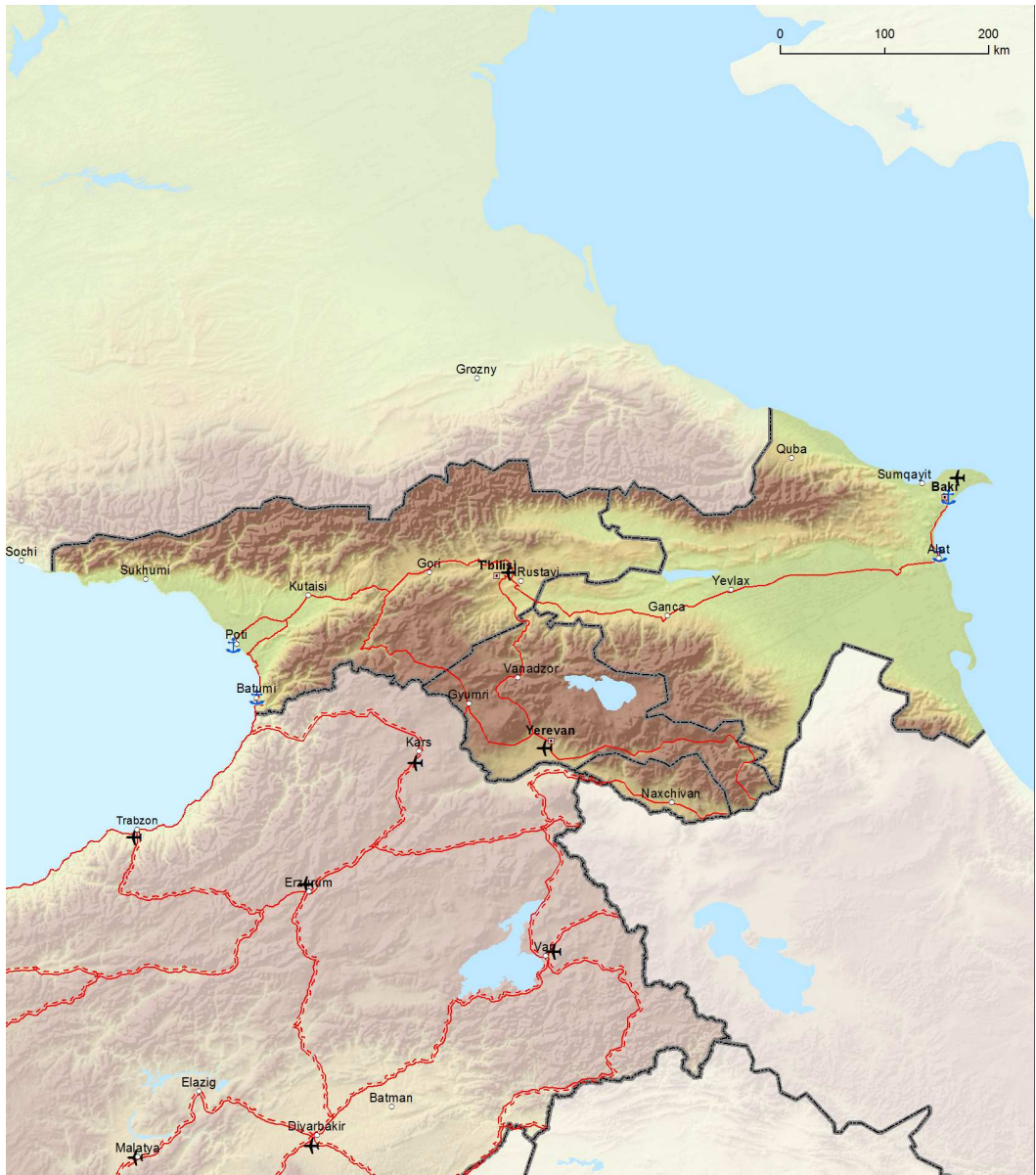


Comprehensive	Core	Comprehensive	Core	Comprehensive	Core
Conventional rail / Completed	Conventional rail / Completed	High speed rail / Completed	High speed rail / Completed	Airports	Airports
Conventional rail / To be upgraded	Conventional rail / To be upgraded	To be upgraded to high speed rail	To be upgraded to high speed rail	Ports	Ports
Conventional rail / Planned	Conventional rail / Planned	High speed rail / Planned	High speed rail / Planned	RRT	RRT



15.2. Indicative Extension to Neighbouring Countries
 Comprehensive Network: Roads, ports, rail-road terminals and airports
Eastern Partnership Transport Network: Armenia, Azerbaijan, Georgia

15

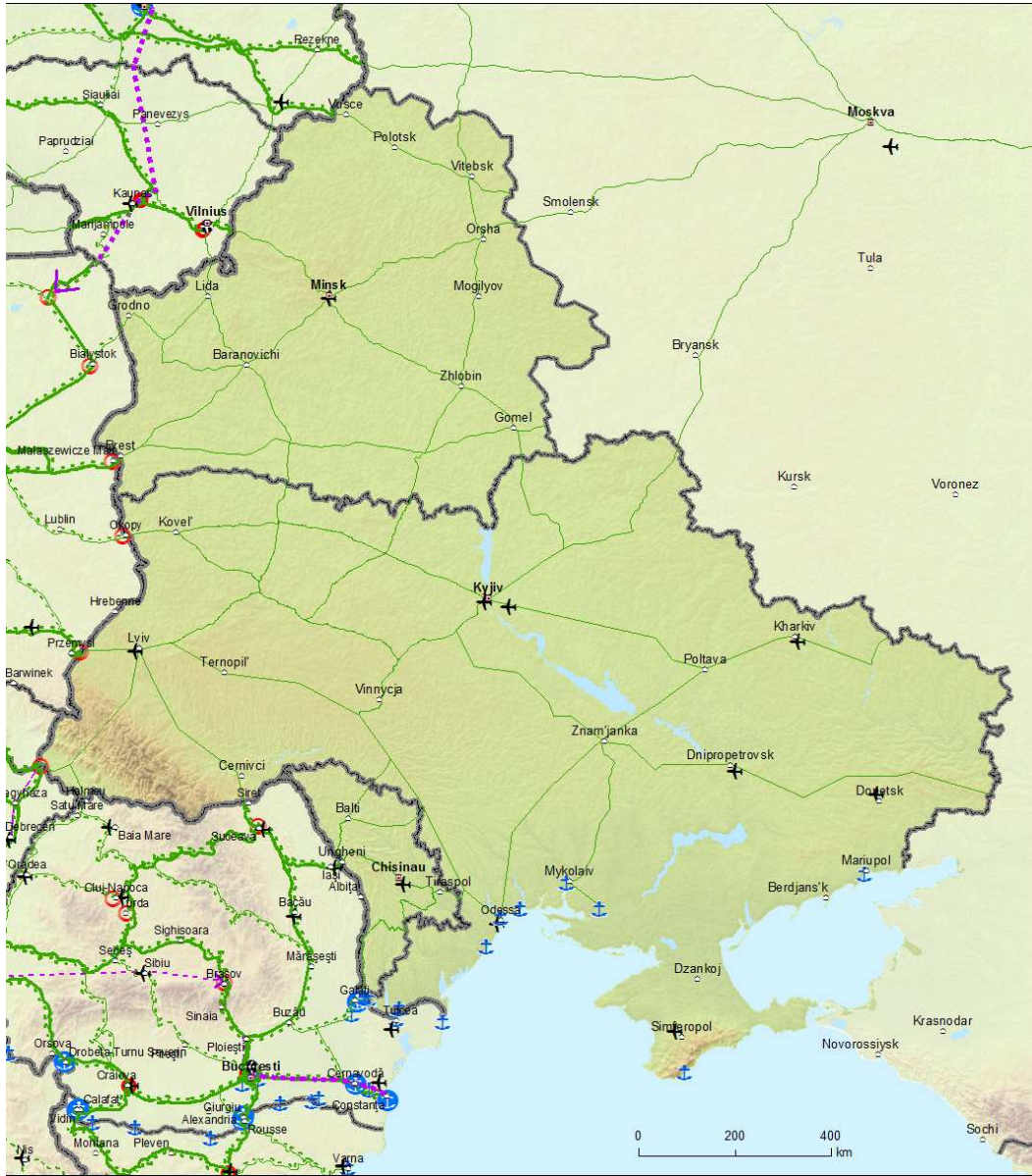


Comprehensive		Core		Comprehensive		Core	
	Road / Completed		Ports		Airports		RRT
	Road / To be upgrade						
	Road / Planned						



16.1. Indicative Extension to Neighbouring Countries
 Comprehensive Network: Railways, ports, rail-road terminals and airports
 Eastern Partnership Transport Network: Belarus, Moldova, Ukraine

16



Comprehensive		Core		Comprehensive		Core			
		Conventional rail / Completed				High speed rail / Completed			Airports
		Conventional rail / To be upgraded				To be upgraded to high speed rail			Ports
		Conventional rail / Planned				High speed rail / Planned			RRT



16.2. Indicative Extension to Neighbouring Countries
 Comprehensive Network: Roads, ports, rail-road terminals and airports
Eastern Partnership Transport Network: Belarus, Moldova, Ukraine

16



Comprehensive	Core		Comprehensive	Core		Comprehensive	Core	
		Road / Completed			Ports			Airports
		Road / To be upgraded			RRT			
		Road / Planned						



17.1. Indicative Extension to Neighbouring Countries
 Comprehensive Network: Railways, ports, rail-road terminals and airports
Northern Dimension Partnership on Transport and Logistics: Belarus, Russian Federation



Comprehensive	Core	Comprehensive	Core	Comprehensive	Core
Conventional rail / Completed	Conventional rail / Completed	High speed rail / Completed	High speed rail / Completed	Airports	Airports
Conventional rail / To be upgraded	Conventional rail / To be upgraded	To be upgraded to high speed rail	To be upgraded to high speed rail	Ports	Ports
Conventional rail / Planned	Conventional rail / Planned	High speed rail / Planned	High speed rail / Planned	RRT	RRT



17.2. Indicative Extension to Neighbouring Countries

Comprehensive Network: Roads, ports, rail-road terminals and airports

Northern Dimension Partnership on Transport and Logistics: Belarus, Russian Federation



Comprehensive	Core	Comprehensive	Core	Comprehensive	Core
	Road / Completed		Ports		Airports
	Road / To be upgraded		RRT		
	Road / Planned				