

This text is meant purely as a documentation tool and has no legal effect. The Union's institutions do not assume any liability for its contents. The authentic versions of the relevant acts, including their preambles, are those published in the Official Journal of the European Union and available in EUR-Lex. Those official texts are directly accessible through the links embedded in this document

► **B**

**COMMISSION DELEGATED REGULATION (EU) 2018/761**

**of 16 February 2018**

**establishing common safety methods for supervision by national safety authorities after the issue of a single safety certificate or a safety authorisation pursuant to Directive (EU) 2016/798 of the European Parliament and of the Council and repealing Commission Regulation (EU) No 1077/2012**

**(Text with EEA relevance)**

(OJ L 129, 25.5.2018, p. 16)

Amended by:

		Official Journal		
		No	page	date
► <b><u>M1</u></b>	Commission Delegated Regulation (EU) 2020/782 of 12 June 2020	L 188	14	15.6.2020

**COMMISSION DELEGATED REGULATION (EU) 2018/761****of 16 February 2018****establishing common safety methods for supervision by national safety authorities after the issue of a single safety certificate or a safety authorisation pursuant to Directive (EU) 2016/798 of the European Parliament and of the Council and repealing Commission Regulation (EU) No 1077/2012****(Text with EEA relevance)***Article 1***Subject matter**

This Regulation establishes common safety methods ('CSMs'), referred to in point (c) of Article 6(1) of Directive (EU) 2016/798, for the supervision of the management of safety by national safety authorities after the railway undertakings have been granted a single safety certificate and infrastructure managers after they have been granted a safety authorisation.

*Article 2***Definition**

For the purposes of this Regulation, the following definitions shall apply:

- (a) 'safety certification body' means the body responsible for issuing a single safety certificate, either the Agency or a national safety authority;
- (b) 'residual concern' means a minor issue identified during the assessment of an application for a single safety certificate or for a safety authorisation which does not prevent their issuing and can be deferred for later supervision.

*Article 3***Supervision process**

1. National safety authorities shall apply the supervision process set out in Annex I.
2. National safety authorities shall establish internal arrangements or procedures for managing the supervision process.
3. For the purposes of supervision, the national safety authorities shall accept the authorisations, recognitions or certificates of products or services provided by railway undertakings and infrastructure managers, or their contractors, partners or suppliers, granted in accordance with relevant Union law, as proof of the ability of railway undertakings and infrastructure managers to fulfil the corresponding requirements defined in Commission Delegated Regulation (EU) 2018/762 <sup>(1)</sup>.

---

<sup>(1)</sup> Commission Delegated Regulation (EU) 2018/762 of 8 March 2018 establishing common safety methods on safety management system requirements pursuant to Directive (EU) 2016/798 of the European Parliament and of the Council and repealing Commission Regulations (EU) No 1158/2010 and (EU) No 1169/2010 (See page 26 of this Official Journal).

*Article 4***Techniques for supervision**

National safety authorities shall adopt suitable techniques, such as audits and inspections, and select the most appropriate ones when planning their supervision activities.

*Article 5***Links between supervision and assessment**

1. The national safety authority carrying out supervision shall use and, where relevant, share information gathered on the performance of the safety management system during its supervision activities for the purpose of renewing or updating single safety certificates or safety authorisations.

2. In cases where the national safety authority referred to in paragraph 1 is not responsible for issuing the single safety certificate or safety authorisation, it shall coordinate promptly with the Agency acting as safety certification body or the relevant national safety authority, in the case of cross-border infrastructure, on its request, after the receipt of an application for renewal or update.

Based on the outcome of the coordination referred to in the first subparagraph, the national safety authority shall identify and target the information which is relevant to assessing whether the railway undertaking's or infrastructure manager's safety management system is effectively working, including at least:

- (a) a description of major non-compliances, which may affect safety performance or create serious safety risks, and any other area of concern identified during supervision activities since the previous assessment;
- (b) the status of the action plan (or plans) established by the railway undertaking or infrastructure manager to resolve major non-compliances and any other area of concern referred to in point (a) and relevant actions that have been taken by the national safety authority to supervise resolution of these issues;
- (c) an overview of the safety performance of the railway undertaking or infrastructure manager operating in its Member State;
- (d) the status of the action plan (or plans) established by the railway undertaking or infrastructure manager to resolve residual concerns from previous assessment.

**▼B***Article 6***Competence of the staff involved in supervision**

1. The national safety authorities shall ensure that staff involved in supervision have the following competencies:
  - (a) knowledge of the relevant regulatory framework as it applies to supervision;
  - (b) knowledge of the functioning of the railway system;
  - (c) appropriate level of critical analysis;
  - (d) experience in the supervision of a safety or similar management system in the railway sector, or a safety management system in a sector with equivalent operational and technical challenges;
  - (e) knowledge of and experience in interviewing skills;
  - (f) problem solving, communication and teamworking.
2. In the case of teamwork, the competencies may be shared amongst the team members.
3. With a view to ensuring the correct application of paragraph 1, the national safety authorities shall put in place a competence management system which shall include:
  - (a) the development of competence profiles for each job, position or role;
  - (b) the recruitment of staff in accordance with the established competence profiles;
  - (c) the maintenance, development and assessment of staff competence in accordance with the established competence profiles.

*Article 7***Decision-making criteria**

1. The national safety authority shall establish and publish decision-making criteria on how it evaluates the correct application of a safety management system by a railway undertaking or an infrastructure manager and the effectiveness of the safety management system in controlling safety risks associated with the activities of the railway undertaking or infrastructure manager.

These criteria shall include information on how the national safety authority manages and deals with non-compliances identified in the safety management system of the railway undertaking and infrastructure manager.

2. The national safety authority shall adopt and publish a procedure detailing how railway undertakings, infrastructure managers and any other interested party may submit a complaint on decisions taken during supervision activities.

**▼B***Article 8***Coordination among national safety authorities and cooperation with other authorities or bodies**

1. National safety authorities involved in the supervision of an infrastructure manager with cross-border infrastructure(s) or of a railway undertaking operating in more than one Member State shall coordinate their approach to supervision in accordance with Article 17(7) and (9) of Directive (EU) 2016/798.

After the granting of the safety authorisation or single safety certificate, national safety authorities shall promptly decide which of them is to have a leading role for coordinating the supervision of the correct application and effectiveness of the safety management system, without prejudice to the obligations of the national safety authorities under points (d) and (j) of Article 16(2) and Article 17 of Directive (EU) 2016/798.

2. For the purposes of paragraph 1, the national safety authorities shall develop arrangements based on the framework for coordinated and joint supervision set out in Annex II.

3. National safety authorities shall also develop cooperation arrangements with the national investigation bodies, certification bodies for entities in charge of maintenance and other competent authorities or bodies.

*Article 9***Repeal**

Regulation (EU) No 1077/2012 is repealed with effect from 16 June 2019.

*Article 10***Entry into force and application**

This Regulation shall enter into force on the twentieth day following its publication in the *Official Journal of the European Union*.

**▼M1**

It shall apply from 16 June 2019.

However, Article 5(2) and paragraphs (1) and (2) of Article 8 shall apply from 16 June 2020 in the Member States that have notified the Agency and the Commission in accordance with Article 33(2) of Directive (EU) 2016/798 that they have extended the transposition period of that Directive, and that have not notified the Agency and the Commission in accordance with Article 33(2a) of Directive (EU) 2016/798 that they have further extended that transposition period.

Article 5(2) and paragraphs (1) and (2) of Article 8 shall apply from 31 October 2020 in the Member States that have notified the Agency and the Commission in accordance with Article 33(2a) of Directive (EU) 2016/798 that they have further extended the transposition period of that Directive.

**▼B**

This Regulation shall be binding in its entirety and directly applicable in all Member States.

*ANNEX I***Supervision process as referred to in Article 3****1. GENERAL**

The national safety authority shall develop a structured and auditable process for the complete activity which takes into account the elements below. This ensures that the supervision process is iterative and takes into account the need to continually improve, as shown in the diagram below in the Appendix.

**2. SETTING UP THE SUPERVISION STRATEGY AND PLAN(S)**

The national safety authority shall:

- (a) collect and analyse data/information from a variety of sources as an input to the strategy and the plan or plans. Sources could include information gathered during the assessment of safety management systems, outcomes of previous supervision activities, information from authorisations of subsystems or vehicles, national investigation bodies accident reports/recommendations, other accident/incident reports or data, railway undertakings' or infrastructure managers' annual safety reports to the national safety authority, annual maintenance reports from entities in charge of maintenance, complaints from members of the public and other relevant sources;
- (b) identify in the supervision strategy risk areas for targeted supervision activities, including those emerging from the integration and management of human and organisational factors, where relevant;
- (c) develop a supervision plan or plans showing how it will give effect to the supervision strategy during the lifecycle of valid single safety certificates and safety authorisations;
- (d) produce an initial estimate of resources required to give effect to the plan or plans, based on the target areas identified;
- (e) allocate resources to give effect to the plan or plans;
- (f) address in the supervision strategy and plan(s) any matters relating to cross-border operations or infrastructure(s) through coordination with other national safety authority (or authorities).

**3. COMMUNICATING THE SUPERVISION STRATEGY AND PLAN(S)**

The national safety authority shall:

- (a) communicate the overall objectives of the supervision strategy and overall explanation of the plan or plans to relevant railway undertakings or infrastructure managers and, where appropriate, more widely to other stakeholders;
- (b) provide relevant railway undertakings or infrastructure managers with an overall explanation on how the supervision plan or plans will be undertaken.

**4. DELIVERING THE SUPERVISION ACTIVITIES**

The national safety authority shall:

- (a) give effect to the plan or plans;
- (b) take proportionate action(s) to deal with failure of a railway undertaking or an infrastructure manager to comply with its legal obligations, including issuing any urgent safety alerts and applying temporary safety measures when necessary;

**▼B**

- (c) evaluate how adequately a railway undertaking or an infrastructure manager has developed and implemented an action plan or plans to remedy any non-compliance or residual concern within a specified time period;
- (d) document the results of its supervision activities.

#### 5. OUTCOMES OF SUPERVISION ACTIVITIES

The national safety authority shall:

- (a) share results of its supervision activities with the relevant railway undertaking or infrastructure manager, including identifying areas of non-compliance on the part of the railway undertaking or infrastructure manager and any areas of good practice to support safety improvement;
- (b) have an overview of the safety performance of the individual railway undertakings or infrastructure managers operating in its Member State;
- (c) publish and communicate to relevant stakeholders its views on the overall safety performance in the Member State;
- (d) publish and communicate to relevant stakeholders its views on the effectiveness of the safety regulatory framework;
- (e) use and when relevant, share information on the performance of the safety management system gathered during the supervision of railway undertakings or infrastructure managers, prior to reassessing the application for a renewal or an update of the single safety certificate or the safety authorisation, with the Agency acting as safety certification body or the relevant national safety authority, in the case of cross-border infrastructure;
- (f) where appropriate, take any enforcement actions, identify whether there is a case for restricting or revoking the single safety certificate or safety authorisation and in cases where it is not responsible for issuing the single safety certificate or safety authorisation, inform the competent authority accordingly.

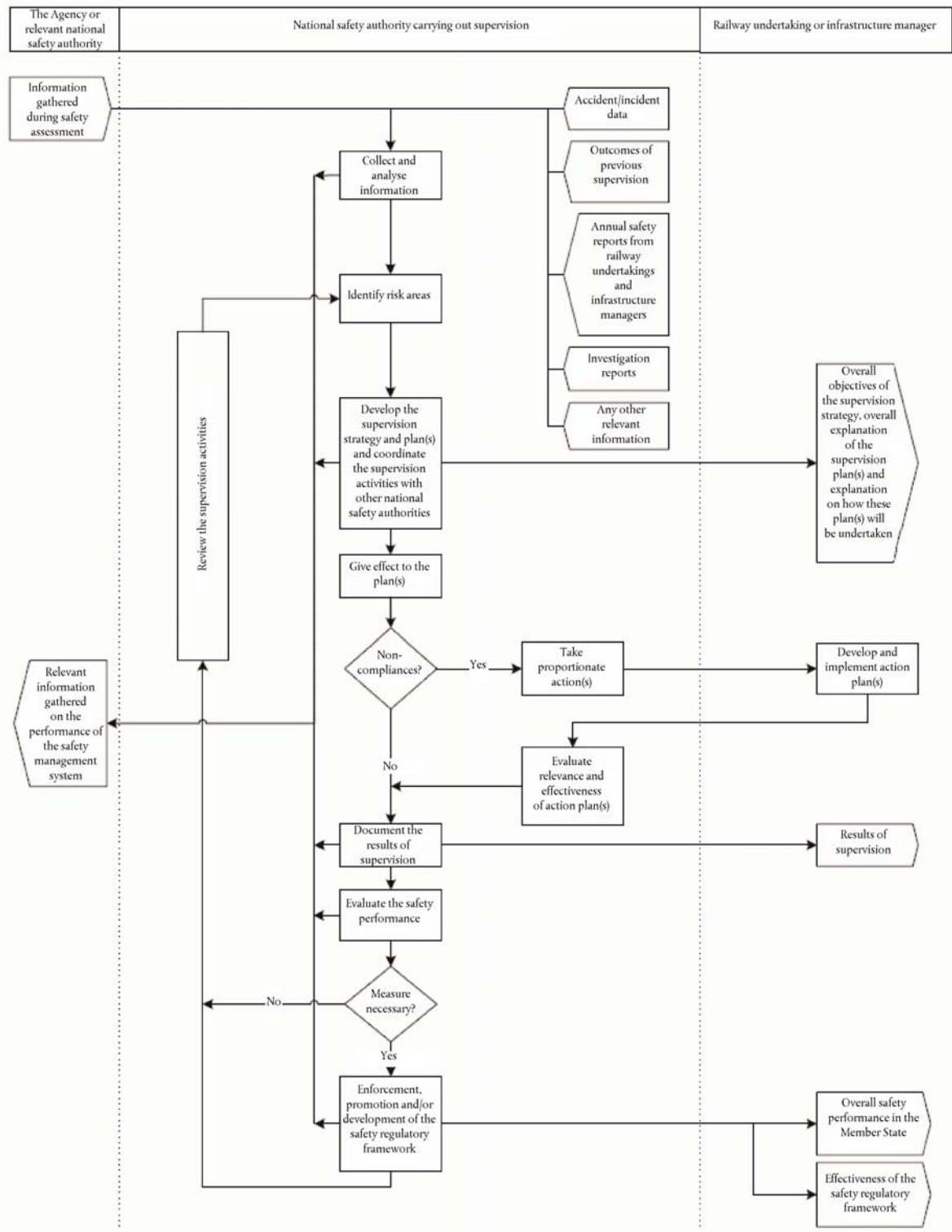
#### 6. REVIEWING SUPERVISION ACTIVITIES

On the basis of information gathered and experience gained during supervision activities and the safety performance both at individual level and at Member State level, the national safety authority shall at regular intervals:

- (a) conduct a review of the supervision strategy and plan(s) to check that the original targeted activity, use of data/information from a variety of sources, supervision outcomes and resource allocation are appropriate, changing priorities as necessary;
- (b) revise the plan or plans if needed and consider the impact of the changes on the supervision strategy;
- (c) contribute when necessary with its views and any proposals to its Member State to overcome any deficiencies in the safety regulatory framework.

▼B

Appendix





*ANNEX II***Framework for coordinated and joint supervision as referred to in Article 8(2)**

The relevant national safety authorities shall develop arrangements based on the following principles and specific elements:

1. Agree which railway undertakings and infrastructure managers are operating in such a manner as to require coordinated or joint supervision.
2. Agree on common language(s) and the level of confidentiality of the information to be used for the purposes of their coordination arrangements.
3. Agree what information to exchange and a timetable for the exchange:
  - (a) exchange relevant information on railway undertakings and infrastructure managers identified under point 1 and share results from their assessment activities;
  - (b) provide copies of safety authorisations where appropriate;
  - (c) share results from related supervision activities, including enforcement decisions and actions, where relevant;
  - (d) share information on the safety performance of railway undertakings and infrastructure managers identified under point 1 in each Member State.
4. Share decision-making criteria:
  - (a) share information on how each national safety authority targets its activities for each railway undertaking and infrastructure manager concerned as part of the supervision plan;
  - (b) establish a dialogue between relevant national safety authorities on the proposed response to dealing with major compliance gaps.
5. Manage coordination:
  - (a) share existing supervision strategies and plans;
  - (b) establish common points of interest and/or common issues;
  - (c) plan efficiently individual, coordinated or joint initiatives without causing unnecessary inconvenience to the railway undertakings and infrastructure managers and by avoiding overlaps in the scope of these initiatives.
6. Agree on which national safety authority (or authorities) should follow up actions aimed to address residual concerns which have been deferred for supervision where appropriate.
7. Agree what areas to target in a coordinated or joint manner:
  - (a) identify key risks for the relevant railway undertakings and infrastructure managers to be addressed in a coordinated or joint manner by national safety authorities;

**▼B**

- (b) agree which national safety authority will lead activities on what issues, where relevant, on the basis of well-established criteria;
  - (c) agree what types of joint supervision activities to undertake, where relevant;
  - (d) agree how railway undertakings and infrastructure managers should be made aware of the arrangements and agreements national safety authorities are reaching.
8. Share good practice:
- (a) develop arrangements to review and coordinate on a regular basis the supervision activities for the relevant railway undertakings and infrastructure managers;
  - (b) develop arrangements to evaluate the effectiveness of the coordination and cooperation between national safety authorities, including the Agency as appropriate.