

NOTES

1. Verifying Dimensions.
The contractor shall verify dimensions against such other drawings or site conditions as pertain to this part of the work.
2. Existing Services.
Any information concerning the location of existing services indicated on this drawing is intended for general guidance only. It shall be the responsibility of the contractor to determine and verify the exact horizontal and vertical alignment of all cables, pipes, etc. (both underground and overhead) before work commences.
3. Issues of Drawings.
Hard copies, pdf and pdf will form a controlled issue of the drawing. All other formats (img, etc.) are deemed to be uncontrolled issues and any work carried out based on these files is at the recipient's risk. RPS will not accept any responsibility for any errors arising from the use of these files, either by human error or the recipient's software, and any errors arising when these files are used to aid the recipient's drawing production, or setting out on site.

- OS mapping
- Proposed Road
- Stopping Up Line
- Stopping Up Line A-B Length: 10m
- Stopping Up Line C-D Length: 10m
- Stopping Up Line E-F Length: 84m

rev	amendments	drawn	date
A	Amendments to Stopping Up drawing as requested by TNI	TN	02/06/15

RPS
 Elmwood House
 74 Boucher Road
 Belfast
 BT12 6RZ
 T +44 (0) 28 90 667914
 F +44 (0) 23 90 062266
 W www.rpsgroup.com/ireland
 E ireland@rpsgroup.com

Client
North Lisburn Development Consortium

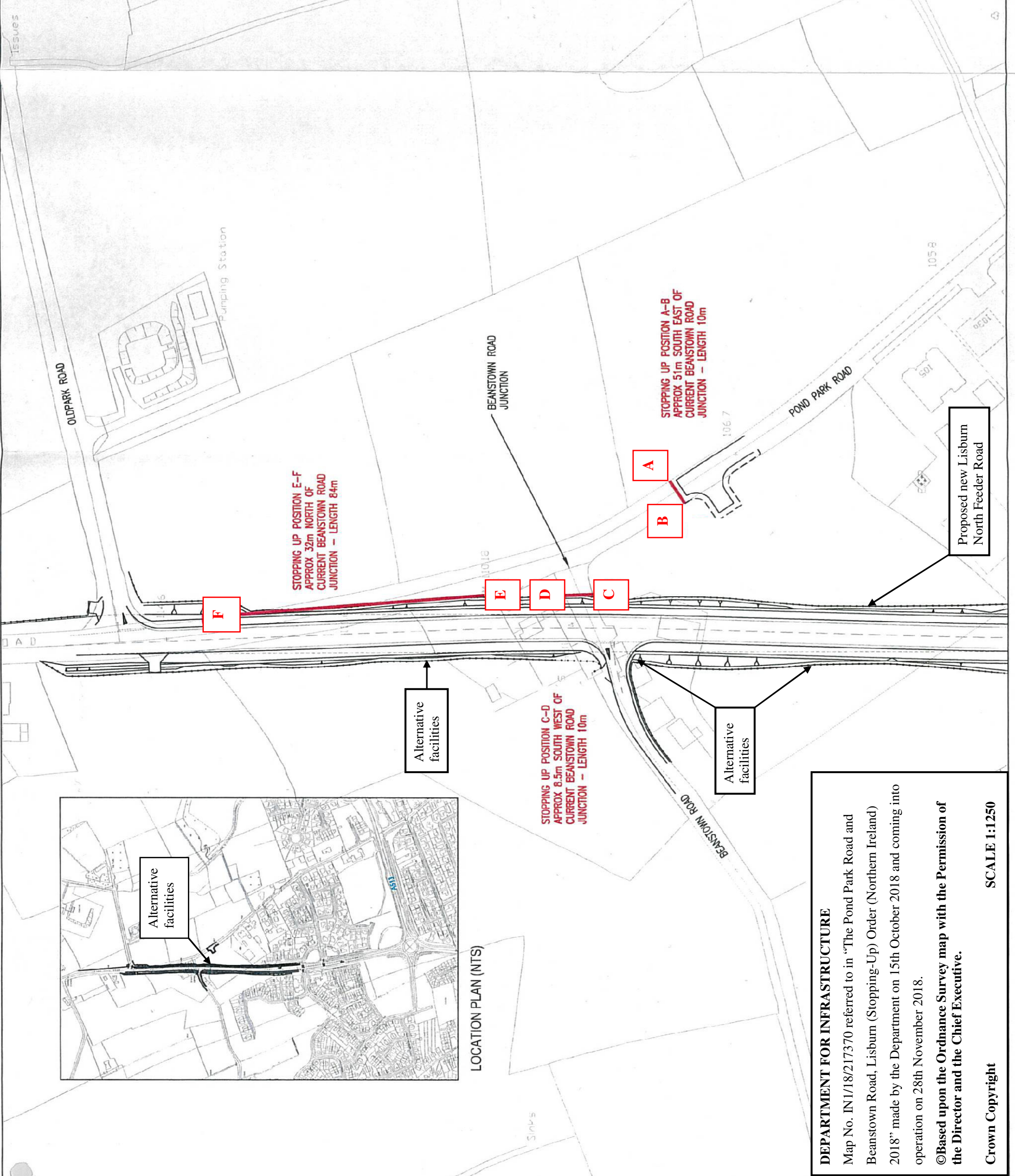
Project
NLFR Phase 3

Title
PROPOSED STOPPING UP LOCATIONS

Drawing Status Preliminary
 Sheet Size A3
 Drawing Scale 1:1250

Drawing Number
IBH0439 /2000
 Rev A

Project Leader B.D
 Drawn By BW
 Date Apr 2015
 Initial Review C.O.C



DEPARTMENT FOR INFRASTRUCTURE
 Map No. IN1/18/217370 referred to in "The Pond Park Road and Beanstown Road, Lisburn (Stopping-Up) Order (Northern Ireland) 2018" made by the Department on 15th October 2018 and coming into operation on 28th November 2018.
 ©Based upon the Ordnance Survey map with the Permission of the Director and the Chief Executive.
 Crown Copyright
 SCALE 1:1250