

---

DRAFT SCOTTISH STATUTORY INSTRUMENTS

---

**2010 No.**

**COUNTRYSIDE**

**The Cairngorms National Park Elections (Scotland) Amendment  
Order 2010**

*Made* - - - - 2010

*Coming into force* - - 2nd October 2010

The Scottish Ministers make the following Order in exercise of the powers conferred by paragraph 4 of schedule 1 to the National Parks (Scotland) Act 2000(a).

In accordance with section 34(5) of that Act, a draft of this Order has been laid before and approved by resolution of the Scottish Parliament.

**Citation and commencement**

1. This Order may be cited as the Cairngorms National Park Elections (Scotland) Amendment Order 2010 and comes into force on 2nd October 2010.

**Amendment of the Cairngorms National Park Elections (Scotland) Order 2003**

2.—(1) The Cairngorms National Park Elections (Scotland) Order 2003(b) is amended in accordance with paragraph (2).

(2) In the Schedule (Electoral Wards)—

(a) in paragraph 1 for the second column (Area) substitute—

“Commencing on the boundary of the National Park at national grid reference 259558, 775659; then following the National Park boundary east to national grid reference 306199, 771024 (summit of Meall a’Choire Bhuidhe); then running northwest to national grid reference 305216, 771955 (summit of Meall Ruigh Mor Thearlaich); then running north to national grid reference 304991, 778057 (summit of Mam nan Carn); then running west to follow the boundary between Perth and Kinross and Aberdeenshire local government areas to national grid reference 290470, 784189; then running west to follow the boundary between Perth and Kinross and Highland local government areas to national grid reference 282171, 785820; then running north to national grid reference 282615, 787100 (summit of Meall an Uillt Chreagaich); then running north to national grid reference 282337, 791176 (summit of Carn Dearg Mor); then running north to national grid reference

---

(a) 2000 asp 10.  
(b) S.S.I. 2003/2.

283239, 793513 (summit of Carn Dearg Beag); then running northeast to national grid reference 284700, 794255 (River Feshie); then following the west bank of the River Feshie north to national grid reference 284256, 805959; then running north to national grid reference 283693, 812345 (summit of Geal-charn Mor); then following the National Park boundary to national grid reference 259558, 775659.”.

- (b) in paragraph 2 in the second column—
  - (i) for “283660, 812347” substitute “283693, 812345;” and
  - (ii) for “then following the boundary between the Badenoch East” to “national grid reference 313559, 813515” substitute “then running southeast to national grid reference 286187, 813165 (summit of Carn Dearg Mor); then running northeast to national grid reference 289552, 817721 (summit of Beinn Ghuilbin); then running north to national grid reference 290766, 820733; then running east to national grid reference 292107, 820640 (summit of Docharn Craig); then running east to national grid reference 293787, 821403 (summit of Creag an Fhithich); then running east to national grid reference 295936, 820701 (River Spey); then running east along the River Spey to national grid reference 297393, 821196; then running south to national grid reference 299000, 817200 (summit of Tore Hill); then running east to national grid reference 303681, 817841 (Dorback Burn); then running along the Dorback Burn to national grid reference 311038, 813483; then running east to national grid reference 311575, 813236 (Allt Dearcaige); then running east along the Allt Dearcaige to national grid reference 313559, 813515 (Water of Ailnack)”;
- (c) in paragraph 4 in the second column for “then running westwards following the boundary between Donside” to “national grid reference 320085, 805293” substitute “then running north to national grid reference 335309, 805742; then running west to national grid reference 331449, 805609 (summit of Scraulac); then running southwest to national grid reference 329125, 804347 (summit of Carn a’ Bhacain); then running west to national grid reference 326536, 805070 (summit of Camock Hill); then running west to national grid reference 322968, 804485 (summit of Brown Cow Hill); then running west to national grid reference 321205, 804529 (summit of Cairn Sawvie); then running northwest to national grid reference 320085, 805293”; and
- (d) in paragraph 5 in the second column for “then running east” to the end substitute “then running east then south following the boundary of Electoral Ward 1 of the National Park to national grid reference 306199, 771024 (summit of Meall a’Choire Bhuidhe); then running east then north to follow the boundary of the National Park to national grid reference 339420, 804256.”.

Authorised to sign by the Scottish Ministers

St Andrew’s House,  
Edinburgh  
Date

## **EXPLANATORY NOTE**


*(This note is not part of the Order)*


This Order amends the Cairngorms National Park Elections (Scotland) Order 2003 (“the 2003 Order”).


Article 2 of this Order amends the Schedule to the 2003 Order by inserting a new description of the area for Electoral Ward 1 and by amending the description of the area for Electoral Ward 5 with the effect that the area added to the National Park as a result of the extension of its boundary into Perth and Kinross is comprised within those Electoral Wards. Minor changes are also made to the description of the unchanged area for Electoral Wards 2 and 4. The map annexed to and forming part of this Note gives a general guide to the new extended areas of Electoral Wards 1 and 5.


A Business and Regulatory Impact Assessment in relation to this Order has been prepared and placed in SPICe. Copies can be obtained from Veronica Hepburn, National Resources Division, Rural and Environment Directorate, the Scottish Government, Mailpoint 10, 1-D (North), Victoria Quay, Edinburgh, EH6 6QQ.


# Cairngorms National Park Electoral Wards

 Cairngorms National Park Boundary

 Electoral Ward 1

 Electoral Ward 2

 Electoral Ward 3

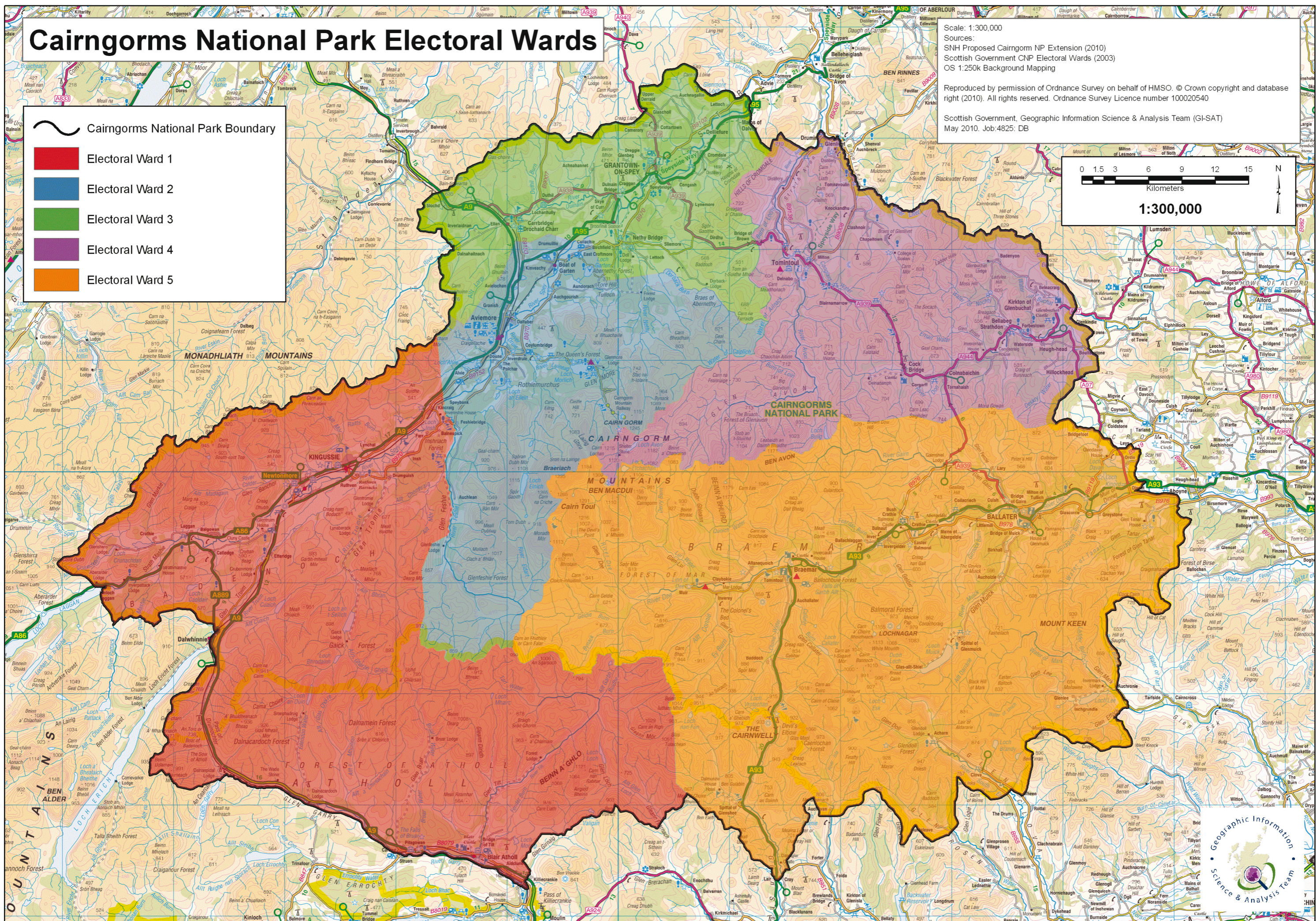
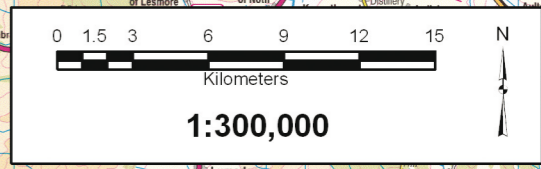
 Electoral Ward 4

 Electoral Ward 5

Scale: 1:300,000  
Sources:  
SNH Proposed Cairngorm NP Extension (2010)  
Scottish Government CNP Electoral Wards (2003)  
OS 1:250k Background Mapping

Reproduced by permission of Ordnance Survey on behalf of HMSO. © Crown copyright and database right (2010). All rights reserved. Ordnance Survey Licence number 100020540

Scottish Government, Geographic Information Science & Analysis Team (GI-SAT)  
May 2010. Job:4825: DB



---

© Crown Copyright 2010

Printed in the UK by The Stationery Office Limited under the authority and superintendence of Carol Tullo, the Queen's Printer for Scotland.



**2010 No.**

**COUNTRYSIDE**

The Cairngorms National Park Elections (Scotland) Amendment  
Order 2010

£8.35

30. 06/10. 19593.

ISBN 978-0-11-100978-9



9 780111 009789