

SCHEDULE 5

PART I

SAMPLING OF SEED LOTS

Sampling instruments – instruments for drawing primary samples

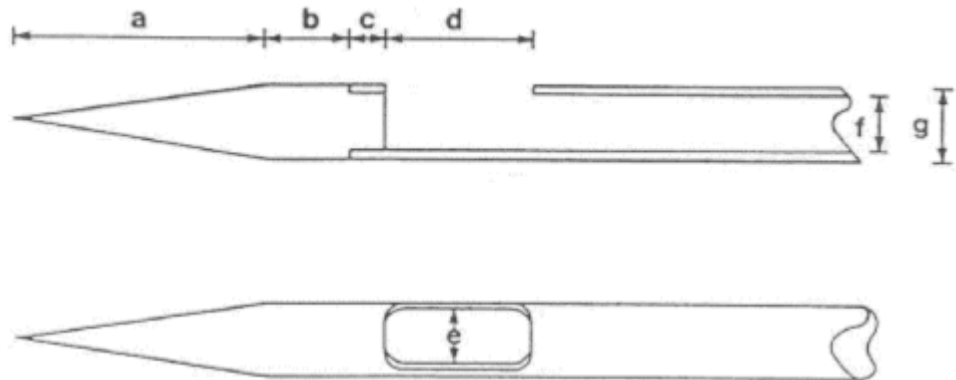
17. The instruments referred to in paragraph 15 of this Part of this Schedule, to be used for drawing primary samples are as follows:–

Dynamic spear sampler

(a) used, in accordance with the methods described in paragraph 19(a) of this Part of this Schedule, for sampling seed lots in sacks or small containers. It shall be a hollow, cylindrical, solid-pointed metal spear or trier which shall be long enough to reach beyond the middle of the sack from the side and shall have an aperture so positioned that portions of seed of equal volume are removed from each part of the sack through which it travels. In sampling seed lots of the species specified in column 1 of the following table a dynamic spear sampler shall have a point length (a), shoulder length (b), boss length (c), aperture length (d), aperture width (e), bore width (f) and outside diameter (g) as shown in the diagrams below of dimensions no smaller than those specified in the corresponding entries in the table:–

Species of Seed for which dynamic spear sampler can be used	Minimum dimensions in millimetres						
	Point length	Shoulder length	Boss length	Aperture Length	Aperture Width	Bore width	Outside Diameter
	(a)	(b)	(c)	(d)	(e)	(f)	(g)
1	2	3	4	5	6	7	8
All species other than maize	85	12	10	33	11	13	15
Maize	82	12	13	40	15	17	19

Status: This is the original version (as it was originally made).



Stick samplers

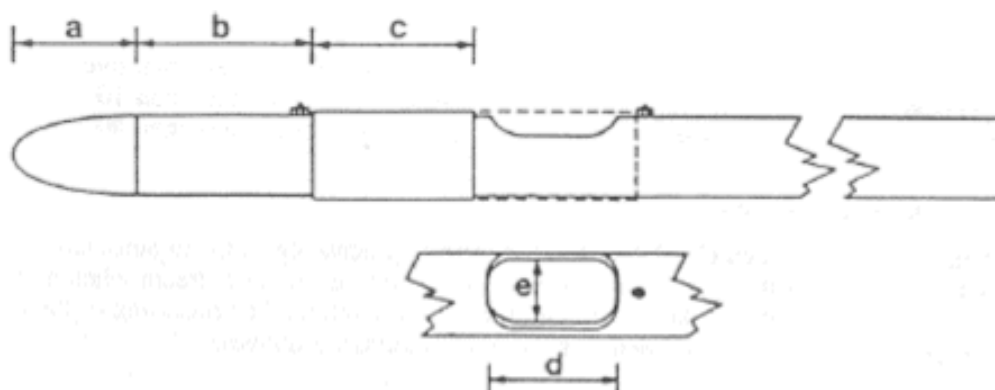
(a) A stick sampler of one of the types described in sub paragraphs (i) and (ii) may, subject to sub paragraphs (i) and (ii), be used if it has an aperture or apertures of sufficient size to allow the unrestricted entry of seed and other particles and is capable of being opened and closed during the sampling procedure as appropriate to the method of use described in paragraph 19(b) of this Part of this Schedule.

(i) Single chamber type

Subject to paragraph 14 of this Part of this Schedule, a single chamber type stick sampler may be used to sample seed lots in open sacks or in large containers. In sampling seed lots in open sacks or in large containers, as specified in column 1 of the following table, a single chamber type stick sampler shall have a point length (a), shoulder length (b), sliding sleeve length (c), aperture length (d), aperture width (e) and bore width (f), as shown in the diagrams below, of the dimensions specified in the corresponding entries in the table, or such other dimensions as the Scottish Ministers may approve in writing—

Type of Container	Dimensions in millimetres					
	Point length	Shoulder length	Sliding sleeve length	Aperture length	Aperture width	Bore width
1	(a)	(b)	(c)	(d)	(e)	(f)
	2	3	4	5	6	7
Seed lots in sacks	55	25	75	50	22	25
Seed lots in large containers	100	390	63	50	22	30

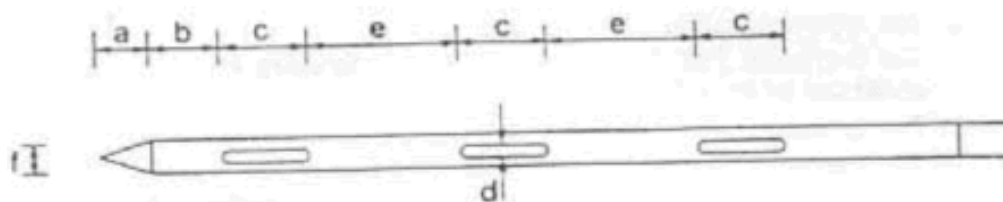
Status: This is the original version (as it was originally made).



(ii) Multi-chamber type

Subject to paragraph 14 of this Part of this Schedule, a multi chamber type stick sampler may be used to sample seed lots in sacks or any other containers. The apertures shall open into chambers which shall be separated from one another by transverse partitions. The multi chamber type stick sampler shall have a point length (a), shoulder length (b), aperture length (c), aperture width (d), aperture separation distance (e) and bore width (f), as shown in the diagram below, of the dimensions specified in the following table or such other dimensions as the Scottish Ministers may approve in writing:—

Dimensions in millimetres					
Point length	Shoulder length	Aperture length	Aperture width	Aperture separation distance	Bore width
(a)	(b)	(c)	(d)	(e)	(f)
60	50	100	15	110	25



Cargo sampler

(a) Subject to paragraph 14 of this Part of this Schedule, a cargo sampler may be used, in accordance with the method described in paragraph 19(c) of this Part of this Schedule, to sample seed lots in large containers and shall only be used in the vertical position.

Seed stream sampler

(b) Subject to paragraph 14 of this Part of this Schedule, a seed stream sampler may be used if it has been approved in writing by the Scottish Ministers and if it uniformly samples the cross section of the seed stream without any loss of the seed and any other particles which enter the seed stream sampler, in accordance with the method described in paragraph 19(d)

Status: *This is the original version (as it was originally made).*

of this Part of this Schedule. Timing devices shall be attached so that the frequency and duration of sampling can be adjusted to meet the requirements of paragraph 13 of this Part of this Schedule.