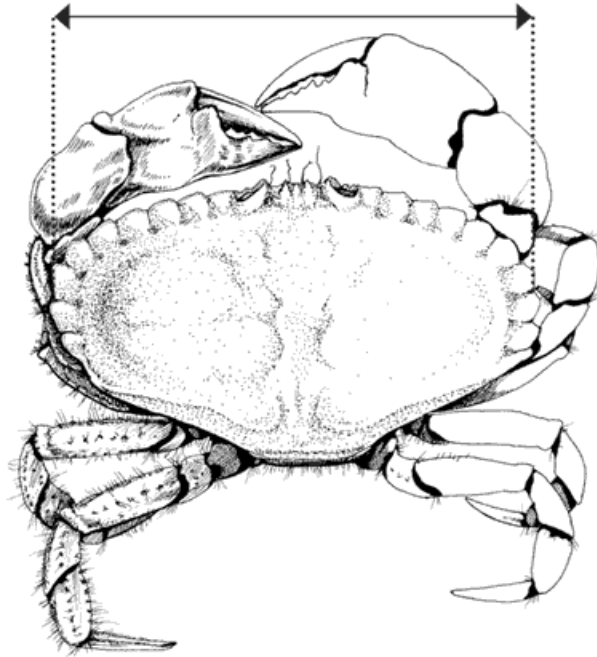


SCHEDULE 1

Article 3(4)

MEASUREMENT OF THE SIZE OF AN EDIBLE CRAB

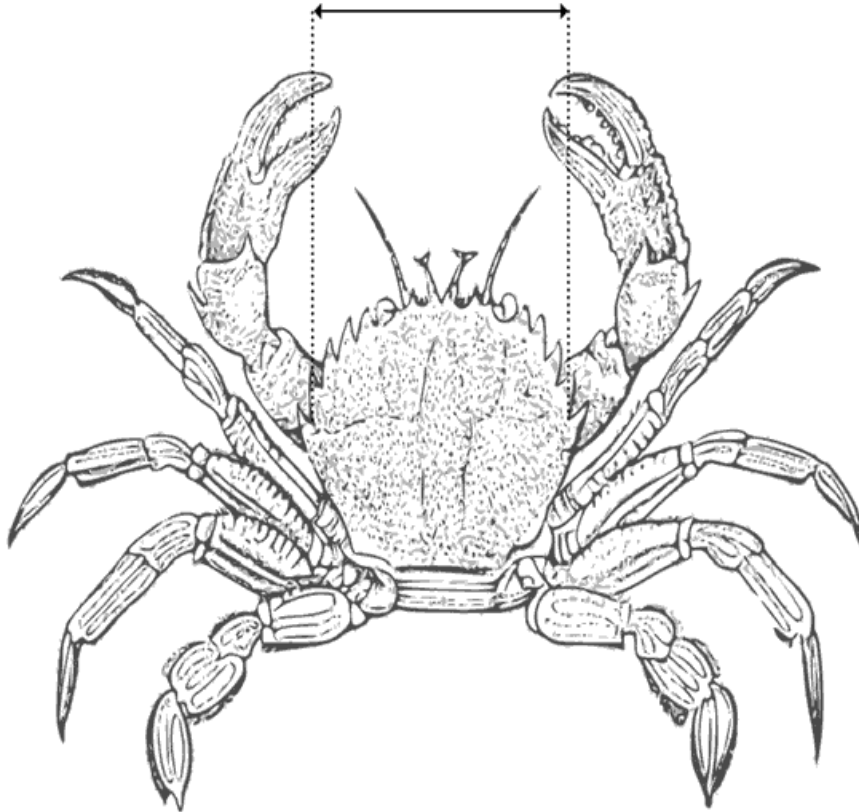


Status: This is the original version (as it was originally made).

SCHEDULE 2

Article 4(8)

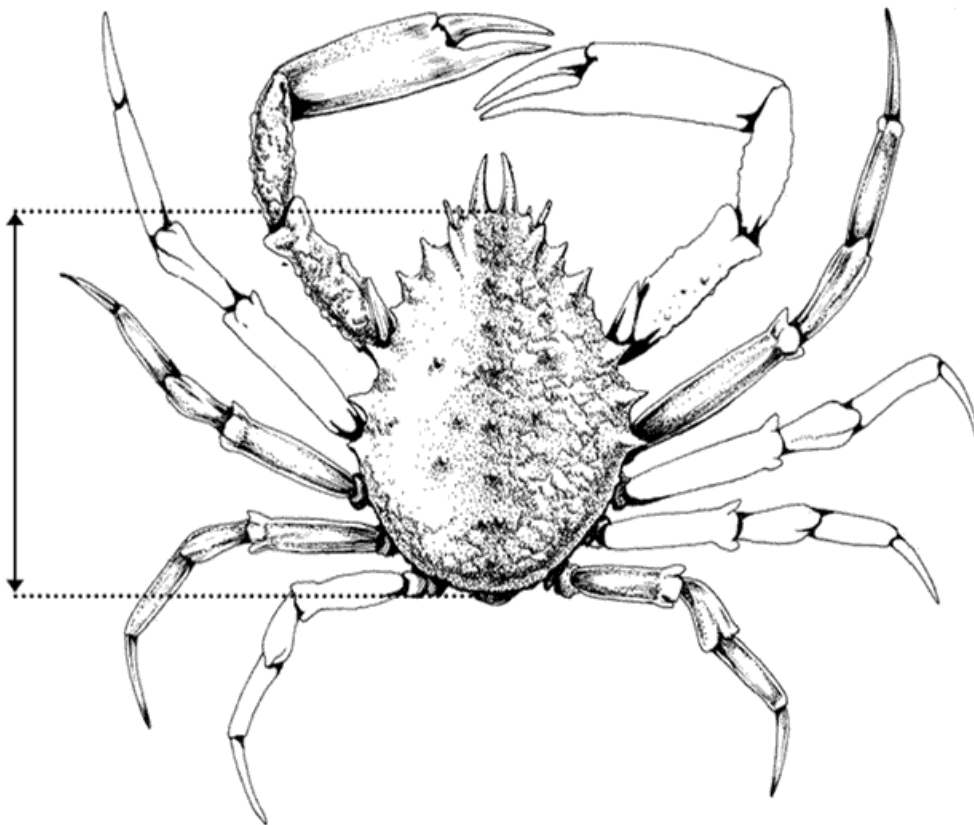
MEASUREMENT OF THE SIZE OF A VELVET CRAB



SCHEDULE 3

Article 5(3)

MEASUREMENT OF THE SIZE OF A SPIDER CRAB

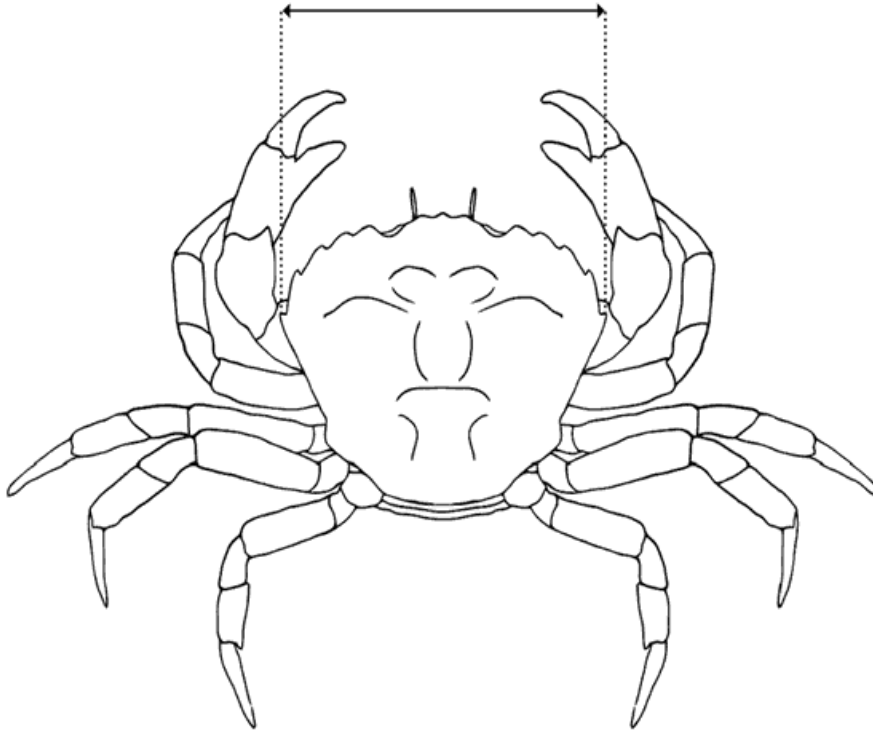


Status: This is the original version (as it was originally made).

SCHEDULE 4

Article 6(3)

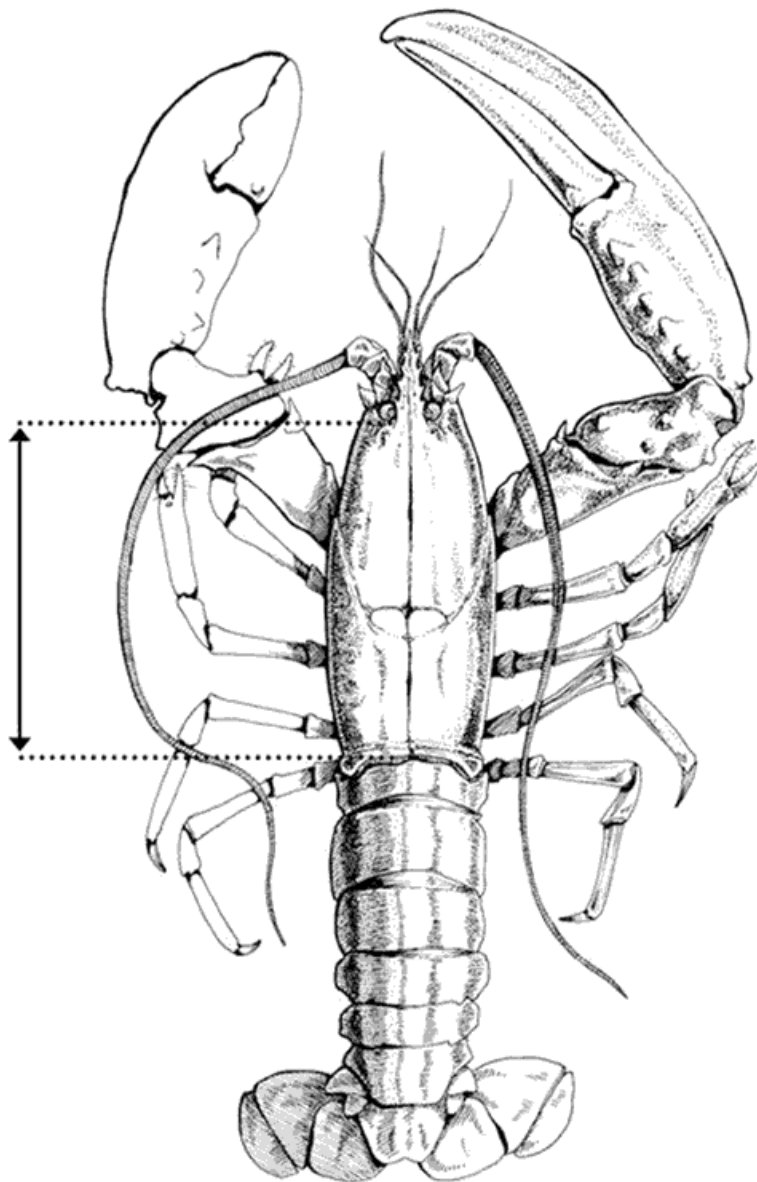
MEASUREMENT OF THE SIZE OF A GREEN CRAB



SCHEDULE 5

Article 7(14)

MEASUREMENT OF THE SIZE OF A LOBSTER



SCHEDULE 6

Article 7(11)

DESCRIPTION OF THE SPECIFIED WATERS

Interpretation**1.** In this schedule—

“miles” means international nautical miles of 1,852 metres; and

“Scottish inshore waters” means the area adjacent to the coast of Scotland and within the Scottish zone, and to the landward of a limit of six miles from the baseline from which the breadth of the territorial sea is measured, up to the mean high-water mark of ordinary spring tides.

Description of the specified waters

2.—(1) That part of Scottish inshore waters which is bounded by the lines (the topographical descriptions of which are provided in the fourth column of the following table) which join in sequential order the co-ordinates listed and identified in the first, second and third columns.

<i>Co-ordinate</i>	<i>North Latitude</i>	<i>West Longitude</i>	<i>Topographical description of boundary line</i>
1	58°40.31'	005°41.06'	Loxodrome
2	58°40.13'	005°41.04'	Loxodrome
3	58°37.29'	005°40.77'	Loxodrome
4	58°32.91'	005°39.67'	Loxodrome
5	58°31.48'	005°39.62'	Loxodrome
6	58°28.71'	005°40.57'	Loxodrome
7	58°28.31'	005°40.64'	Loxodrome
8	58°23.42'	005°44.40'	Loxodrome
9	58°20.09'	005°45.82'	Loxodrome
10	58°18.63'	005°45.87'	Loxodrome
11	58°11.76'	005°46.49'	Loxodrome
12	58°11.06'	005°47.07'	Loxodrome
13	58°08.09'	005°49.07'	Loxodrome
14	58°06.95'	005°49.79'	Loxodrome
15	58°05.96'	005°50.49'	Loxodrome
16	58°05.41'	005°50.97'	Loxodrome
17	58°03.91'	005°53.77'	Loxodrome
18	58°03.48'	005°54.49'	Loxodrome
19	58°01.91'	005°59.09'	Loxodrome
20	58°01.63'	005°59.69'	Loxodrome

Status: This is the original version (as it was originally made).

<i>Co-ordinate</i>	<i>North Latitude</i>	<i>West Longitude</i>	<i>Topographical description of boundary line</i>
21	57°59.28'	006°02.37'	Loxodrome
22	57°52.83'	006°04.10'	Loxodrome
23	57°50.90'	006°04.68'	Loxodrome
24	57°49.43'	006°05.35'	Loxodrome
25	57°49.18'	006°10.38'	Loxodrome
26	57°48.53'	006°16.88'	Loxodrome
27	57°48.60'	006°18.02'	Loxodrome
28	57°48.83'	006°21.33'	Loxodrome
29	57°50.62'	006°26.28'	Loxodrome
30	57°50.77'	006°27.25'	Loxodrome
31	57°51.15'	006°30.28'	Loxodrome
32	57°50.96'	006°31.08'	Loxodrome
33	57°48.16'	006°34.86'	Loxodrome
34	57°45.60'	006°37.38'	Loxodrome
35	57°44.43'	006°37.91'	Loxodrome
36	57°43.55'	006°38.73'	Loxodrome
37	57°43.25'	006°38.93'	Loxodrome
38	57°42.26'	006°43.33'	Loxodrome
39	57°41.75'	006°44.58'	Loxodrome
40	57°40.72'	006°46.93'	Loxodrome
41	57°39.52'	006°48.68'	Loxodrome
42	57°38.77'	006°49.61'	Loxodrome
43	57°37.88'	006°50.29'	Loxodrome
44	57°36.25'	006°50.93'	Loxodrome
45	57°34.88'	006°53.08'	Loxodrome
46	57°34.45'	006°53.84'	Loxodrome
47	57°33.45'	006°54.76'	Loxodrome
48	57°32.08'	006°55.91'	Loxodrome
49	57°31.87'	006°56.06'	Loxodrome
50	57°31.52'	006°56.28'	Loxodrome
51	57°31.12'	006°56.41'	Loxodrome
52	57°30.15'	006°57.14'	Loxodrome

Status: This is the original version (as it was originally made).

<i>Co-ordinate</i>	<i>North Latitude</i>	<i>West Longitude</i>	<i>Topographical description of boundary line</i>
53	57°29.36'	006°57.53'	Loxodrome
54	57°26.18'	006°58.96'	Loxodrome
55	57°24.92'	006°59.29'	Loxodrome
56	57°23.68'	006°59.09'	Loxodrome
57	57°20.72'	006°58.44'	Loxodrome
58	57°20.62'	006°58.38'	Loxodrome
59	57°19.33'	006°57.08'	Loxodrome
60	57°18.57'	006°56.54'	Loxodrome
61	57°17.25'	006°55.83'	Loxodrome
62	57°15.92'	006°55.16'	Loxodrome
63	57°14.48'	006°54.78'	Loxodrome
64	57°12.29'	006°54.08'	Loxodrome
65	57°10.92'	006°52.91'	Loxodrome
66	57°10.77'	006°52.71'	Loxodrome
67	57°04.85'	006°54.84'	Loxodrome
68	57°03.55'	006°55.99'	Loxodrome
69	57°02.78'	006°56.54'	Loxodrome
70	57°01.17'	006°57.78'	Loxodrome
71	56°56.37'	007°01.14'	Loxodrome
72	56°56.14'	007°01.24'	Loxodrome
73	56°54.57'	007°01.67'	Loxodrome
74	56°53.37'	007°01.92'	Loxodrome
75	56°51.25'	007°02.24'	Loxodrome
76	56°49.15'	007°02.34'	Loxodrome
77	56°47.47'	007°01.97'	Loxodrome
78	56°45.89'	007°05.89'	Loxodrome
79	56°45.09'	007°08.31'	Loxodrome
80	56°44.54'	007°10.12'	Loxodrome
81	56°43.19'	007°13.69'	Loxodrome
82	56°32.86'	007°29.30'	Loxodrome
83	56°30.97'	007°33.56'	Boundary line following the seaward limit of Scottish inshore waters

<i>Co-ordinate</i>	<i>North Latitude</i>	<i>West Longitude</i>	<i>Topographical description of boundary line</i>
84	58°40.31'	005°41.06'	

(2) Those parts of Scottish inshore waters which are adjacent to the following Scottish islands (the centroid co-ordinates of which are listed in the second and third columns of the following table) and are bounded to the north, east, south and west by the seaward limit of Scottish inshore waters.

<i>Island</i>	<i>North Latitude</i>	<i>West Longitude</i>
St Kilda (Hirta)	57°48.96'	008°35.53'
St Kilda (Boreray)	57°52.19'	008°29.45'
Sula Sgeir	59°05.73'	006°09.38'
North Rona	59°07.39'	005°49.56'
Flannan Isles (Eilean a Ghoba)	58°16.94'	007°38.90'
Flannan Isles (Eilean Mor)	58°17.15'	007°35.29'
Flannan Isles (Soraidh)	58°16.43'	007°35.34'