

1989 No. 2316

HIGHWAYS, ENGLAND AND WALES

The (A5) London–Holyhead Trunk Road and Slip Roads and the (A49) Newport–Shrewsbury–Whitchurch–Warrington Trunk Road (A5/A49 Shrewsbury By-Pass and Improvements) Order 1985 (Emstrey Amendment) Order 1989

Made - - - - - *7th December 1989*

Coming into force *5th January 1990*

The Secretary of State for Transport makes this Order in exercise of the powers conferred by sections 10 and 106 of the Highways Act 1980(a), and now vested in him(b), and of all other enabling powers:

1. The (A5) London–Holyhead Trunk Road and Slip Roads and the (A49) Newport–Shrewsbury–Whitchurch–Warrington Trunk Road (A5/A49 Shrewsbury By-Pass and Improvements) Order 1985 is amended so as to–

- (a) substitute for Schedule 4 to that order the Schedule to this order;
- (b) substitute for the part of the route of the main new trunk road described in paragraph (1) of Schedule 1 to that order and shown on site plan B of the deposited plan referred to in that order which lies between a point 100 metres north east of its junction with the A5 trunk road to a point 800 metres north east of that junction, the route shown by a heavy black line on the deposited plan referred to article 2 below.

2. In this Order–

- (1) the measurements of distance are measured along the route of the relevant highway;
- (2) (i) “the deposited plan” means the plan numbered HA10/2WM123 marked “The (A5) London–Holyhead Trunk Road and Slip Roads and the (A49) Newport–Shrewsbury–Whitchurch–Warrington Trunk Road (A5/A49 Shrewsbury By-Pass and Improvements) Order 1985 (Emstrey Amendment) Order 1989” signed by authority of the Secretary of State and deposited at the Department of Transport, Romney House, 43 Marsham Street, London SW1P 3PY;

(a) 1980 c.66.

(b) S.I. 1981/238.

3. This Order shall come into force on 5th January 1990 and may be cited as the (A5) London-Holyhead Trunk Road and Slip Roads and the (A49) Newport-Shrewsbury-Whitchurch-Warrington Trunk Road (A5/A49 Shrewsbury By-Pass and Improvements) Order 1985 (Emstrey Amendment) Order 1989.

Signed by authority of the Secretary of State
7th December 1989

D. R. Ritchie
Regional Director
West Midlands Region
Department of Transport

SCHEDULE BRIDGE OVER THE RIVER SEVERN AT EMSTREY

SPECIFICATION

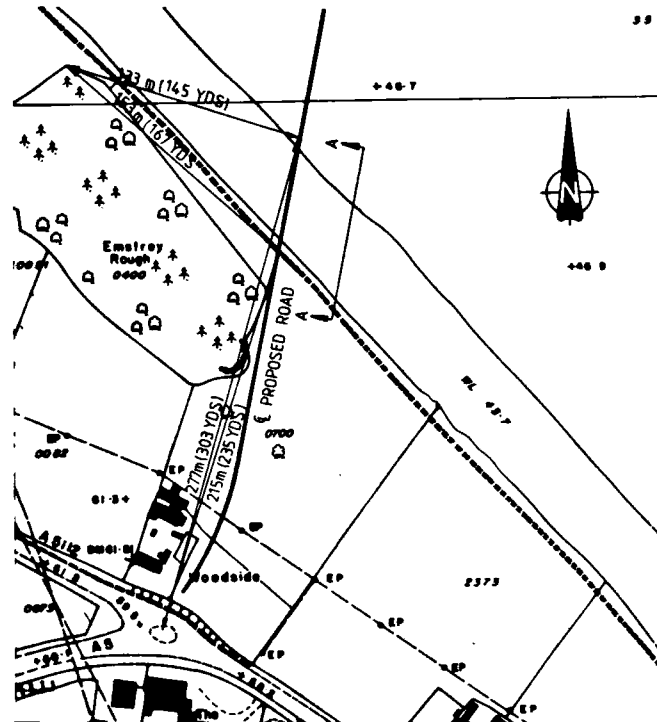
Points of Commencement and Termination

From a point on the south-west bank of the River Severn approximately 215m (235 yds) from the centre of the existing Emstrey Roundabout on the A5 Trunk Road and approximately 153m (167 yds) from the northern corner of Emstrey Rough.

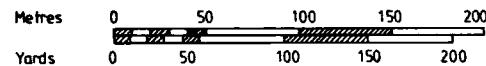
To a point on the north-east bank of the River Severn approximately 277m (303 yds) from the centre of the existing Emstrey Roundabout on the A5 Trunk Road and approximately 133m (145 yds) from the northern corner of Emstrey Rough.

Headroom not less than 7.5m (24.6 feet) above normal river retention level to be maintained for a distance of approximately 62.0m (67.8 yds) as defined by the above limits.

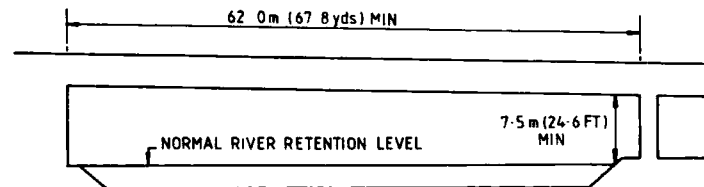
Waterway as defined by the above limits.



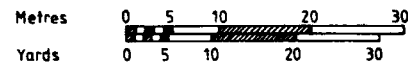
LOCATION PLAN



Scale 1 2500



SECTION A-A



Scale 1 500