

---

STATUTORY INSTRUMENTS

---

**1992 No. 2808**

**HIGHWAYS, ENGLAND AND WALES**

**The Cheshire County Council (Arpley New Bridge,  
Warrington) Scheme 1989 Confirmation Instrument 1992**

*Made - - - - 27th October 1992*

The Secretary of State for Transport makes this Instrument in exercise of powers conferred by section 106(3) of the Highways Act 1980<sup>(1)</sup>, and now vested in him<sup>(2)</sup>, and of all other enabling powers:

1. The Cheshire County Council (Arpley New Bridge, Warrington) Scheme 1989 is hereby confirmed without modifications.
2. The said scheme as confirmed (hereinafter referred to as “the Scheme”) is set out in the Schedule hereto and copies of the Scheme with its accompanying plans are deposited at the offices of the Department of Transport, Romney House, 43 Marsham Street, London SW1P 3PY; The North West Network Management Division, Department of Transport, Sunley Tower, Piccadilly Plaza, Manchester, M1 4BE, the Cheshire County Council, County Hall, Chester, and the Warrington Borough Council, Town Hall, Warrington.
3. The Scheme will become operative on the date on which notice that it has been confirmed is first published in accordance with paragraph 1 of Schedule 2 to the Highways Act 1980.
4. This Instrument may be cited as the Cheshire County Council (Arpley New Bridge, Warrington) Scheme 1989 Confirmation Instrument 1992.

Signed by authority of the Secretary of State for Transport

27th October 1992

*M. M. Niven*  
North West Network Management Division  
Department of Transport

---

(1) 1980 c. 66.  
(2) S.I.1981/238.

*Status: This is the original version (as it was originally made). This item of legislation is currently only available in its original format.*

## SCHEDULE

### THE CHESHIRE COUNTY COUNCIL (ARPLEY NEW BRIDGE, WARRINGTON) SCHEME 1989

Cheshire County Council (hereinafter referred to as “the Council”) makes this Scheme in exercise of their powers under section 106(3) of the Highways Act 1980 and of all other enabling powers:—

1. The Council are hereby authorised to construct over the navigable waters of the River Mersey the bridge specified in the Schedule to this Scheme as par to the highway maintainable at the public expense which they are proposing to construct from the existing roundabout junction of the A49 and A5060 to a proposed retail/leisure and business park at Arpley Meadows, in the Borough of Warrington in the County of Cheshire.

2. This Scheme may be cited as the “Cheshire County Council (Arpley New Bridge, Warrington) Scheme 1989”.

## SCHEDULE

### SCHEME PLAN

1. Drawing No C377/103/P1 annexed hereto.

### LOCATION

2. Near Arpley Railway Station in the Borough of Warrington in the County of Cheshire.

### POINTS OF COMMENCEMENT AND TERMINATION

3. From a point on the eastern bank of the River Mersey adjacent to the A49/A5060 Wilderspool roundabout junction to a point approximately opposite on the western bank of the said River, the bridge will be at OS grid reference 607 877 (based on Ordnance Survey Sheets SJ 6087—6187).

### MAIN SPAN

4. A single 50.8 metres minimum clear span.

### HEADWAY

5. 2.7 metres above 5.3 metres AOD Newlyn over the full span length.

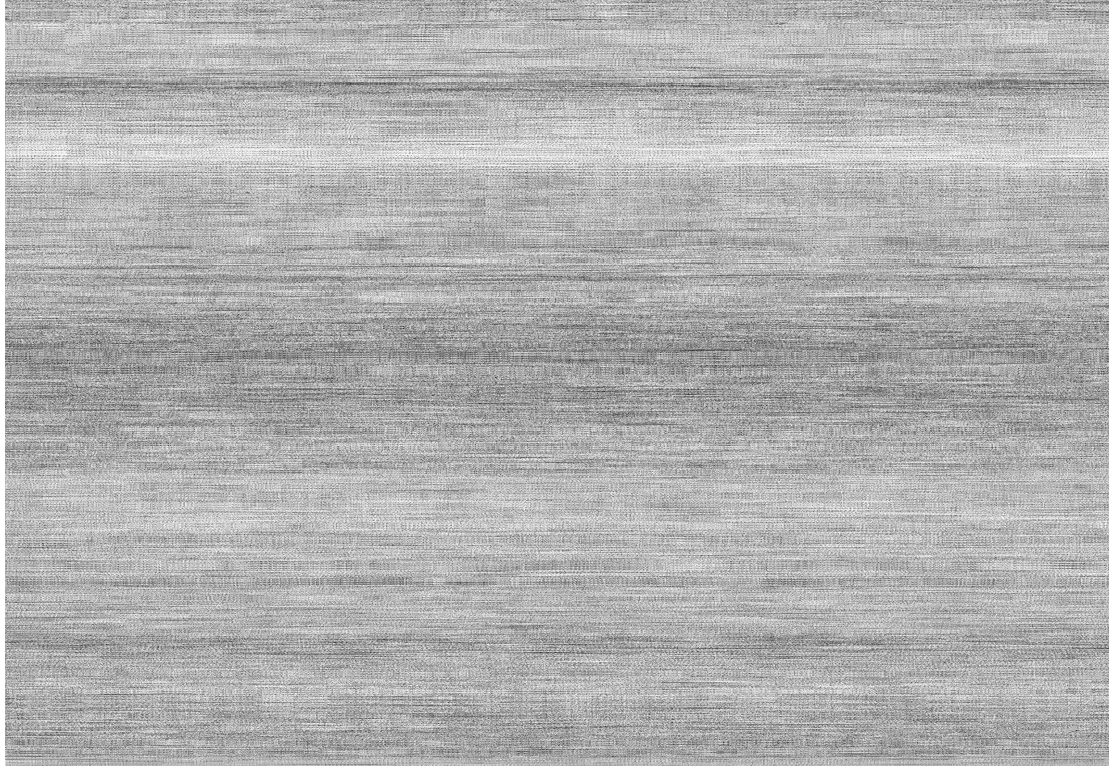
### WATERWAY

6. As existing.

### CONSTRUCTION

7. The bridge to be a single span structure supported on piled abutments on both banks of the river.

**Status:** This is the original version (as it was originally made). This item of legislation is currently only available in its original format.



THE COMMON SEAL OF CHESHIRE COUNTY COUNCIL was hereunto affixed this 11th day of January One thousand nine hundred and eighty nine in the presence of;

L.S.

*J. P. Johnson*  
Senior Assistant County Secretary and Solicitor