

---

STATUTORY INSTRUMENTS

---

**2002 No. 1810**

**HIGHWAYS, ENGLAND**

**The Staffordshire County Council (Trent and Mersey Canal)  
Temporary Bridge Scheme 2001 Confirmation Instrument 2002**

*Made - - - - 4th July 2002*

*Coming into force in accordance with article 1*

The Secretary of State for Transport, Local Government and the Regions makes this Instrument in exercise of powers conferred by section 106(3) of the Highways Act 1980<sup>(1)</sup> and now vested in him<sup>(2)</sup> and of all other powers enabling him in that behalf:

1. This Instrument may be cited as “The Staffordshire County Council (Trent and Mersey Canal) Temporary Bridge Scheme 2001 Confirmation Instrument 2002” and shall come into force on the date on which notice that it has been confirmed is first published in accordance with paragraph 1 of Schedule 2 to the Highways Act 1980.

2. The Staffordshire County Council (Trent and Mersey Canal) Temporary Bridge Scheme 2001 (“the Scheme”) is hereby confirmed without modifications.

3. The Scheme as confirmed is set out in the Schedule hereto (including the plan) and copies of the scheme with its accompanying plan are deposited at the offices of the Department for Transport, Local Government and the Regions, Great Minister House, 76 Marsham Street, London SW1P 4DR, and at the offices of Staffordshire County Council, PO Box 11, County Buildings, Martin Street, Stafford, ST16 2LH.

Signed by authority of the Secretary of State for Transport, Local Government and the Regions

4th July 2002

*J. Blackie*  
Regional Director Government Office for the  
North East

---

(1) 1980 c. 66.  
(2) S.I.1997/2971.

*Status: This is the original version (as it was originally made). This item of legislation is currently only available in its original format.*

## THE SCHEDULE

### THE STAFFORDSHIRE COUNTY COUNCIL (TRENT AND MERSEY CANAL) TEMPORARY BRIDGE SCHEME 2001

The Staffordshire County Council (hereinafter referred to as “the Council”) make this Scheme in exercise of their powers under Section 106(3) of the Highways Act 1980 and of all other powers enabling them in that behalf—

1. The Council are authorised to construct over the navigable waters of the Trent and Mersey canal the temporary bridge specified in the Schedule to this Scheme as part of the highway which they are proposing to construct between the A51 Wolseley Road and the roundabout junction of Lea Hall Link Road and Power Station Road Rugeley in the County of Stafford.

2. This Scheme may be cited as The Staffordshire County Council (Trent and Mersey Canal) Temporary Bridge Scheme 2001.

## THE SCHEDULE TO THE SCHEME

### PLANS AND SPECIFICATION OF THE TRENT AND MERSEY CANAL TEMPORARY BRIDGE

The location and general design of the Bridge are shown on the plan numbered 7F3133/S002A/01A marked “The Staffordshire County Council (Trent and Mersey Canal) Temporary Bridge Scheme 2001”, dated 2nd July 2001, sealed with the Common Seal of the Staffordshire County Council and deposited at the offices of the Council, Lichfield District Council and of the Secretary of State for Transport, Local Government and the Regions.

#### **Points of Commencement and Termination**

Commencing from a point on the west bank of the Trent and Mersey canal, 220 metres north-east of the aqueduct over the River Trent and terminating at a point 20 metres to the east on the east bank of the canal.

The bridge will carry construction traffic over the Trent and Mersey canal.

#### **Span**

A single span of approximately 20 metres in length.

#### **Headway**

Not less than 3.05 metres above waterway (i.e. above Bishton Hall weir level of 69.91 metres A.O.D.).

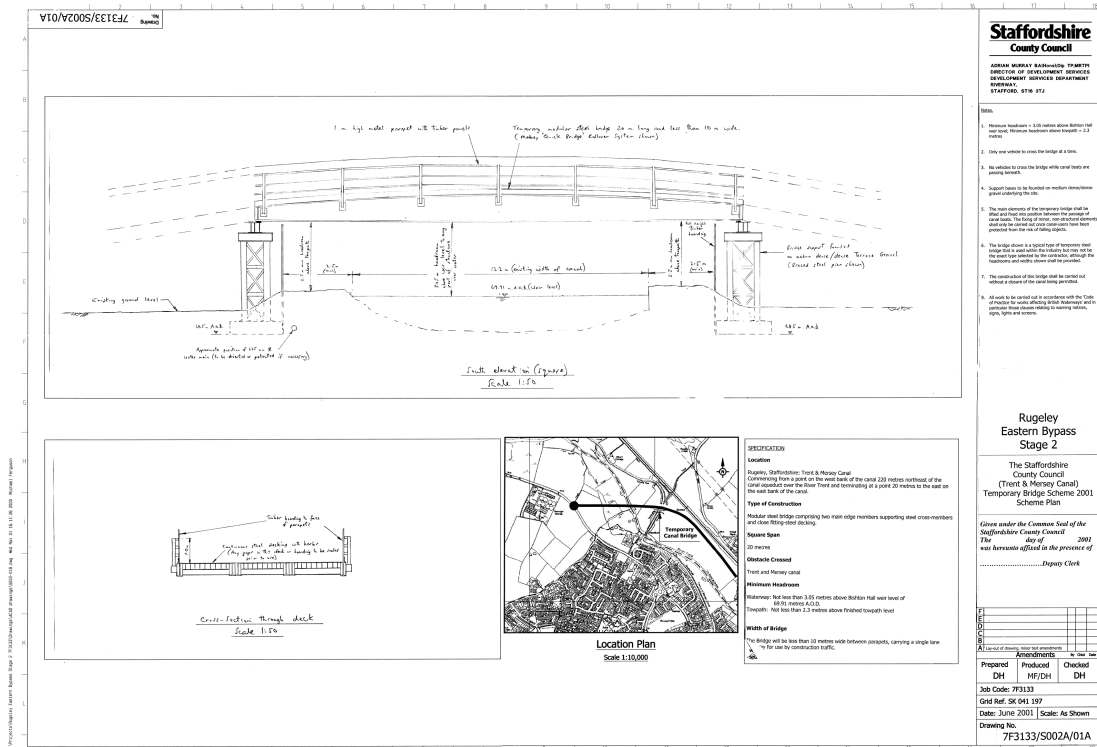
#### **Waterway**

The width of the canal shall remain unaffected by the temporary bridge i.e. 12.2 metres.

#### **Overall Dimensions**

The bridge will be less than 10 metres wide between parapets carrying a single lane roadway for use by construction traffic.

**Status:** This is the original version (as it was originally made). This item of legislation is currently only available in its original format.



The Common Seal of the Staffordshire County Council was hereunto affixed on the 2nd day of July 2001 in the presence of:—

A R Wallis  
 Deputy Clerk