

2002 No. 2425

HIGHWAYS, ENGLAND

**The A69 Trunk Road (M6 to Carlisle City Boundary)
(Detrunking) Order 2002**

Made - - - - - *19th September 2002*

Coming into force - - - *1st April 2003*

The Secretary of State for Transport makes this Order in exercise of powers conferred by sections 10 and 12 of the Highways Act 1980^(a) and now vested in him^(b), and of all other powers enabling him in that behalf:

1. This Order may be cited as the A69 Trunk Road (M6 to Carlisle City Boundary) (Detrunking) Order 2002 and shall come into force on 1st April 2003.

2. In this Order—

- (i) “the plan” means the plan, numbered HA 10/OD/339 and marked “The A69 Trunk Road (M6 to Carlisle City Boundary) (Detrunking) Order 2002,” signed by the Secretary of State for Transport and deposited at DTLR Records Management Branch, Ashdown House, St Leonards on Sea, Hastings, East Sussex TN37 7GA;
- (ii) “principal road” as a classification for a highway, means that the highway is a principal road for the purposes of enactments and instruments which refer to highways classified as principal roads and is also classified for the purpose of every other enactment and instrument which refers to highways classified by the Secretary of State; and
- (iii) “the trunk road” means the A69 Trunk Road.

3. The lengths of the trunk road described in the Schedule to this Order shall cease to be a trunk road and shall be classified as a principal road from the date on which this Order comes into force.

Signed by authority of the Secretary of State for Transport

19th September 2002

Kevin Lasbury
A Divisional Director
Highways Agency

(a) 1980 c. 66.
(b) S.I. 1981/238.

THE A69 TRUNK ROAD
(M6 TO CARLISLE CITY BOUNDARY)
(DE-TRUNKING)
ORDER 2002

THESE PLANS DO NOT SHOW WIDTHS OR CONSTRUCTIONAL DETAILS

SCALE 1:2500

KEY

HIGHWAY CEASING TO BE A TRUNK ROAD



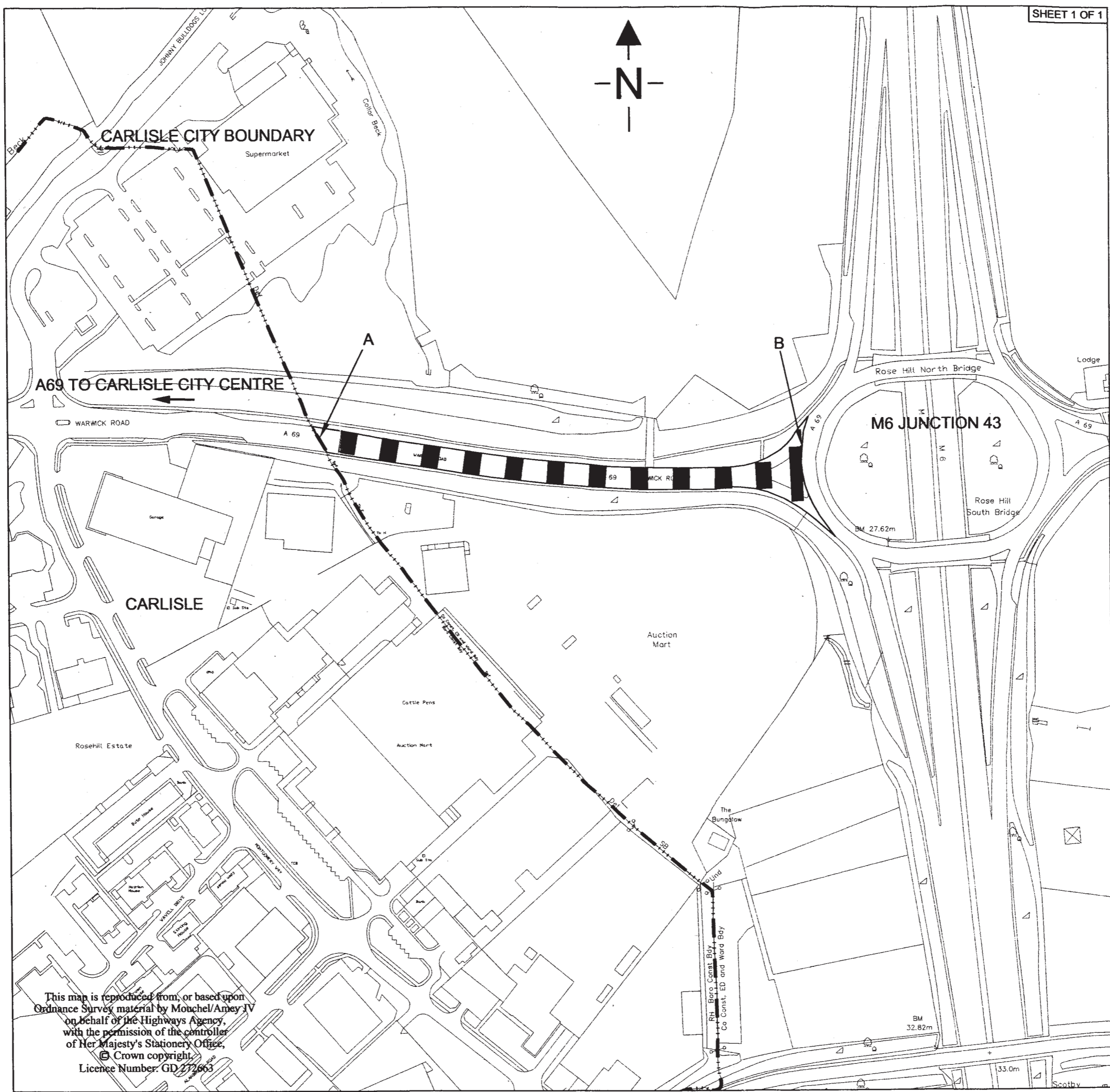
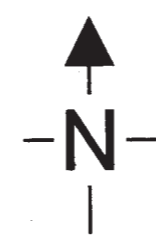
PLANS REGISTRY

SIGNED BY AUTHORITY
on behalf of the
SECRETARY OF STATE FOR TRANSPORT
on the 19th September 2002

PLAN No. HA 10/OD/339

DATE 19th September 2002.

.....
DIVISIONAL DIRECTOR:
HIGHWAYS AGENCY



CARLISLE CITY BOUNDARY

A69 TO CARLISLE CITY CENTRE

M6 JUNCTION 43

CARLISLE

This map is reproduced from, or based upon
Ordnance Survey material by Mouchel/Amey JV
on behalf of the Highways Agency,
with the permission of the controller
of Her Majesty's Stationery Office.
© Crown copyright
Licence Number: GD 272663

THE SCHEDULE

LENGTH OF THE TRUNK ROAD CEASING TO BE A TRUNK ROAD

The length of the A69 trunk road ceasing to be a trunk road is situated between the Carlisle City Boundary (marked "A" on the plan) and the M6 (marked "B" on the plan) is shown by broad black dashes on the plan, and is approximately 0.82 km in length.

£2.50

© Crown copyright 2002

Printed and published in the UK by The Stationery Office Limited
under the authority and superintendence of Carol Tullo, Controller of
Her Majesty's Stationery Office and Queen's Printer of Acts of Parliament.
E1398 9/2002 121398 19585

ISBN 0-11-042814-5

