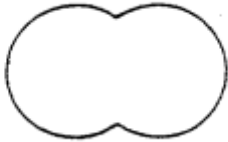


SCHEDULE 1

Article 3(2)

PART I
SHIELDS

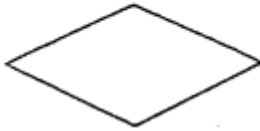
For gold articles



For silver articles



For platinum articles



Status: This is the original version (as it was originally made).

PART II

EXAMPLES OF THE COMMON CONTROL MARK

For gold articles of the standard of fineness 750



For silver articles of the standard of fineness 925



For platinum articles of the standard of fineness 950



SCHEDULE 2

Article 3(3)

FOREIGN ASSAY OFFICE MARKS

AUSTRIA



CZECH REPUBLIC



P R A H A

CZECH REPUBLIC – CI
THE CONTROL MARK OF THE
PRAGUE CZECH REPUBLIC
ASSAY OFFICE

DENMARK



THE CONTROL MARK OF THE
DANISH ASSAY OFFICE

FINLAND

1. Articles of precious metals

750

Gold

585

Silver
925



750

585

925

2. Articles of precious metals exported with standards of fineness other than those recognised by Finnish law

Status: This is the original version (as it was originally made).

Gold
375



IRELAND

“1. Articles of precious metals

Gold



Silver



Platinum



“2. Articles made elsewhere



NETHERLANDS



NORWAY



PORTUGAL

Gold

375

585

750

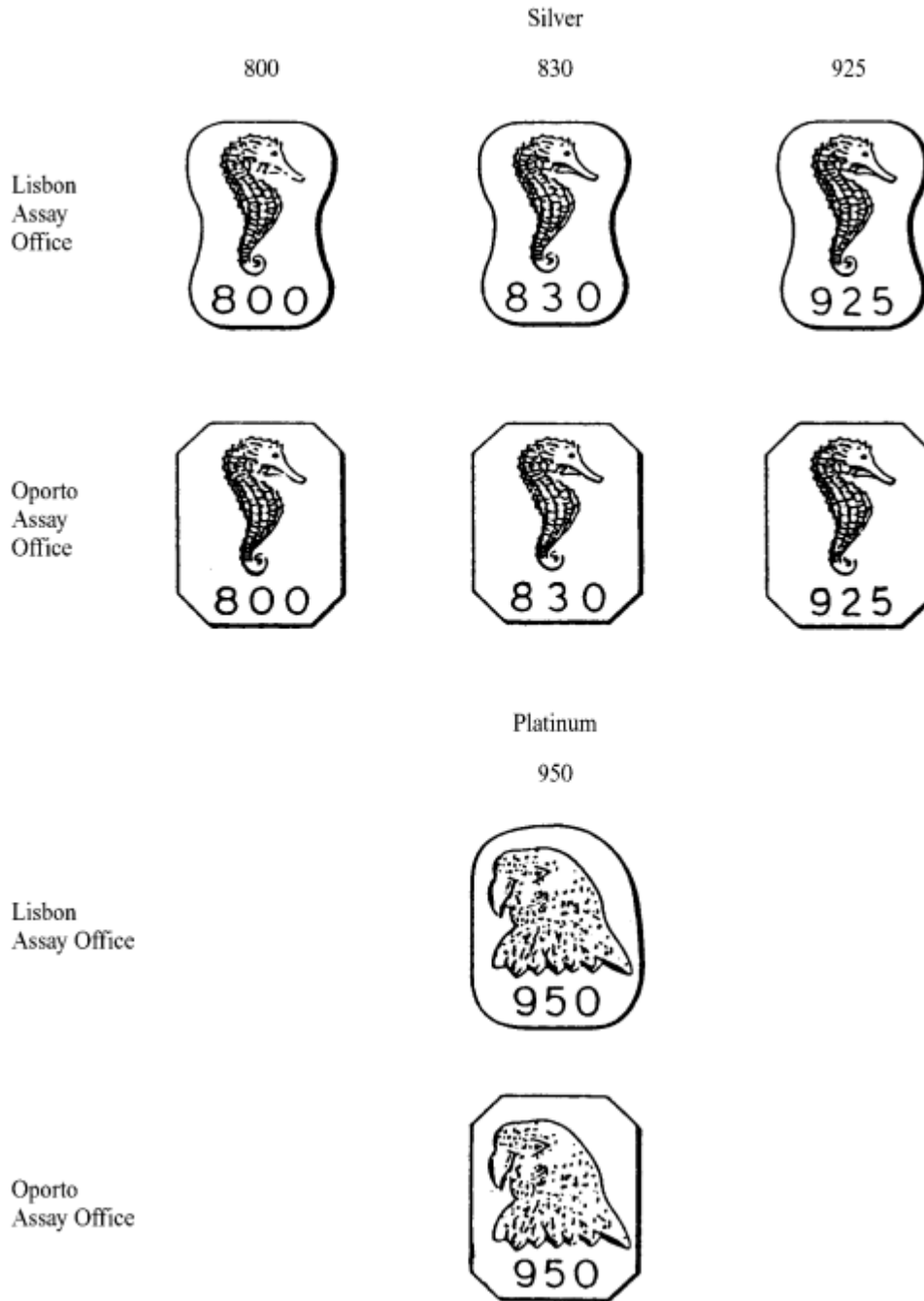
Lisbon
Assay
Office



Oporto
Assay
Office



Status: This is the original version (as it was originally made).



SWEDEN

1. For all standards of fineness recognised by the Convention



2. For standards of fineness recognised by the Swedish law, being at least 750 for gold, 830 for silver and 950 for platinum.

(a) Articles made in Sweden

Gold

small marks



large marks



Silver

small marks



large marks



Platinum



(b) Articles made elsewhere

Status: This is the original version (as it was originally made).

Gold



Silver



Platinum



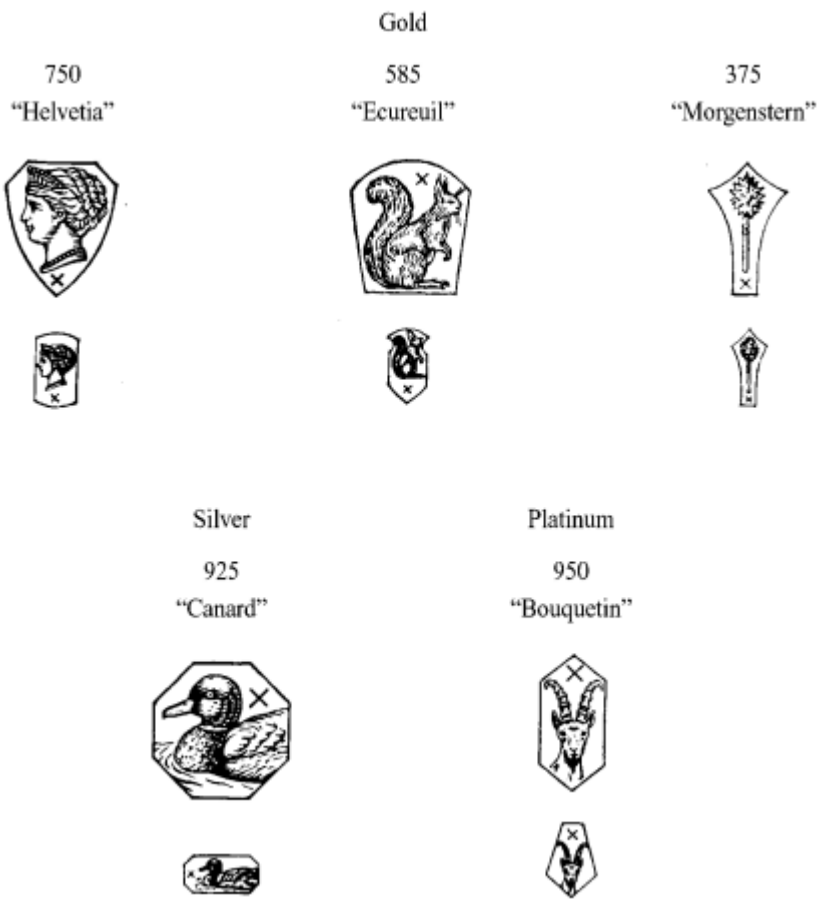
SWITZERLAND

A.

OFFICIAL SWISS CONTROL MARKS

1. Articles of precious metals

Status: This is the original version (as it was originally made).



2. Watch cases of precious metals not originating in Switzerland

Status: This is the original version (as it was originally made).



3. Articles of precious metals exported with standards of fineness other than those recognised by Swiss law



B.

DISTINCTIVE MARKS OF THE AUTHORISED SWISS ASSAY OFFICES

The distinctive mark of each office is to be found on all Official Swiss Control Marks at the place marked with a cross in the illustrations above.

<i>Office</i>	<i>Distinctive mark</i>
Berne (Head Office)	+ (Swiss cross)
Bâle-ville	* (5 pointed star)
Bâle-aéroport	M
Bienne	B
La Chaux-de-Fonds	C
Chiasso	t
Genève-ville	G
Genève-aéroport	A
Granges	g
Lausanne	V
Le Locle	L
Neuchâtel	N
Le Noirmont	n
Romanshorn	R
Schaffhouse	S
Zürich-ville	Z
Zürich-aéroport	K