

**2005 No 1867**

**HIGHWAYS, ENGLAND**

**The Derbyshire County Council (Erewash Canal Bridge)  
Scheme 2003 Confirmation Instrument 2005**

*Made - - - - - 5th July 2005*

*Coming into force in accordance with article 1*

The Secretary of State for Transport makes this Instrument in exercise of powers conferred by section 106(3) of the Highways Act 1980(a) and now vested in him(b) and of all other powers enabling him in that behalf:

1. This Instrument may be cited as The Derbyshire County Council (Erewash Canal Bridge) Scheme 2003 Confirmation Instrument 2005 and shall come into force on the date on which notice that it has been confirmed is first published in accordance with paragraph 1 of Schedule 2 to the Highways Act 1980.
2. The Derbyshire County Council (Erewash Canal Bridge) Scheme 2003 (“the Scheme”) is hereby confirmed with modifications.
3. The Scheme as confirmed is set out in the Schedule hereto (including the plan) and copies of the Scheme with its accompanying plan are deposited at the offices of the Department for Transport, Floor 13 (IMD), Ashdown House, St Leonards on Sea, Hastings, East Sussex, TN37 7GA, and at the offices of the Derbyshire County Council, County Hall, Matlock, Derbyshire, DE4 3AG.

Signed by authority of the Secretary of State for Transport

5th July 2005

*J Blackie*  
Regional Director  
Government Office for the North East

---

(a) 1980 c. 66.  
(b) S.I. 1981/238.

**THE SCHEDULE**  
**THE DERBYSHIRE COUNTY COUNCIL**  
**(EREWASH CANAL BRIDGE) SCHEME 2003**

The Derbyshire County Council (hereinafter referred to as "the Council") make this Scheme in exercise of their powers under section 106(3) of the Highways Act 1980 and under an Agreement dated 2nd June 2003 with Nottinghamshire County Council made in accordance with the powers contained in Section 8 of the Highways Act 1980 and of all other powers enabling them in that behalf.

1. The Council is authorised to construct over the navigable waters of the Erewash Canal the bridge specified in the Schedule to this Scheme as part of the highway which they are proposing to construct between the A6007 (Chalons Way, Ilkeston) and the A6096 (Awworth-Cossall By-Pass) in the Borough of Broxtowe in the County of Nottinghamshire and in the Borough of Erewash in the County of Derbyshire.

2. The Scheme may be cited as the Derbyshire County Council (Erewash Canal Bridge) Scheme 2003.

Given under the common seal of the Council on the 24th day of October 2003.

THE COMMON SEAL of the DERBYSHIRE COUNTY COUNCIL was hereunto affixed in the presence of:



*J R Fawcett*  
County Secretary

**THE SCHEDULE TO THE SCHEME**  
**PLANS AND SPECIFICATIONS OF THE EREWASH CANAL BRIDGE**

**Points of commencement and termination**

From a point on the west bank of the canal 662 metres east of the junction with the B6007/A6007 Chalons Way measured along the centre line of the proposed road (Grid Ref 447140E, 342605N).

From a point on the east bank of the canal 498 metres west of the junction with the Cossall and Awworth By-pass measured along the centre line of the proposed road (Grid Ref 447130E, 342600N).

**Span**

A single square span of 9.70 metres.

**Headway**

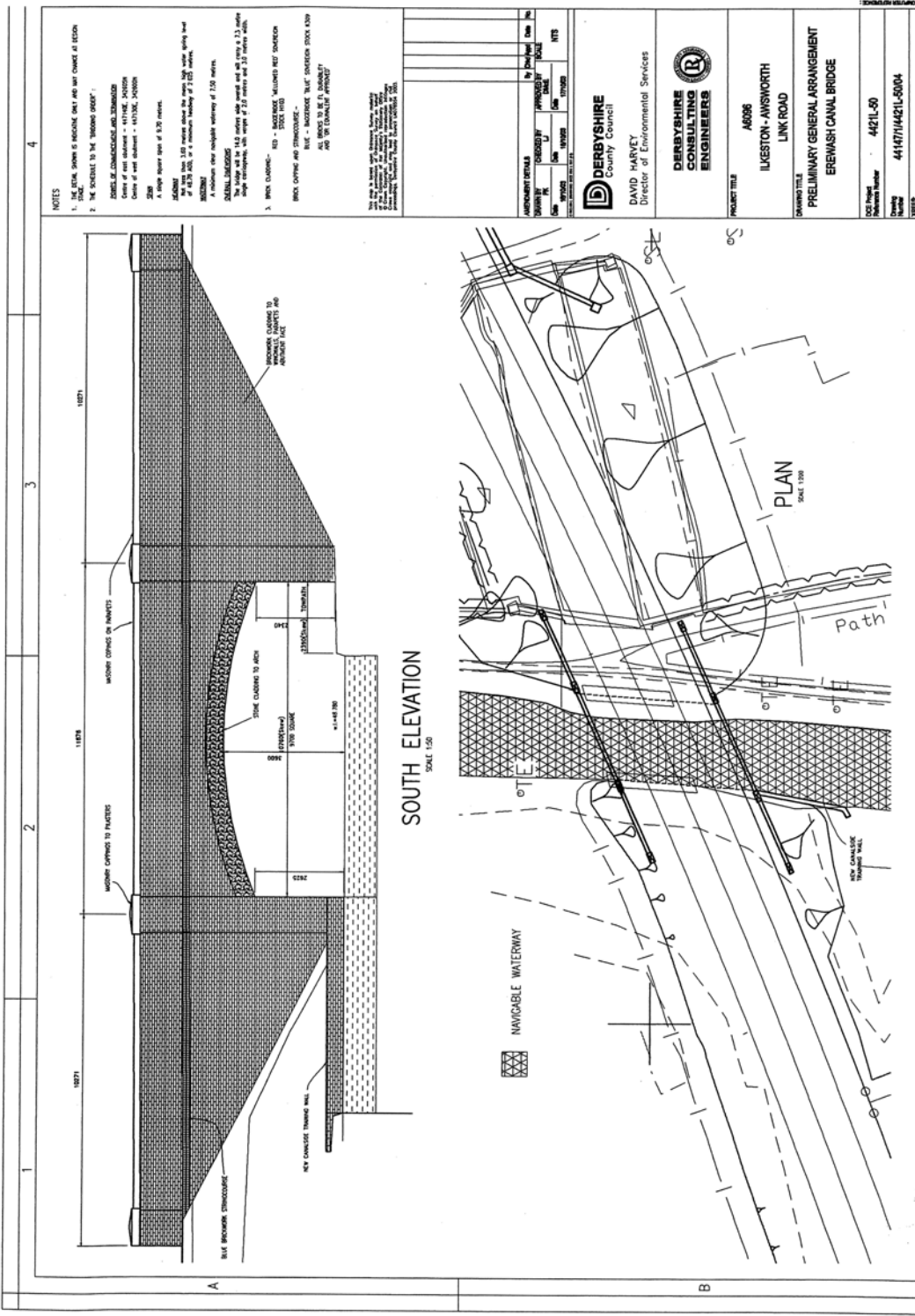
Not less than 2.625 metres above the mean high water spring tide level (MHWS) of 48.78 metres AOD.

**Waterway**

A minimum clear navigable waterway of 7.50 metres.

**Overall dimensions**

The Bridge will be 14 metres wide overall and will carry a 7.30 metre wide single carriageway, with verges of 2 metres and 3 metres width.



**NOTES**

1. THE SCALE SHOWN IS INDICATIVE ONLY AND MAY CHANGE AT SECTIONS.
2. THE SCALE IS TO THE "FINISHED SURFACE".
3. THE SCALE IS TO THE "FINISHED SURFACE".
4. THE SCALE IS TO THE "FINISHED SURFACE".
5. THE SCALE IS TO THE "FINISHED SURFACE".
6. THE SCALE IS TO THE "FINISHED SURFACE".
7. THE SCALE IS TO THE "FINISHED SURFACE".
8. THE SCALE IS TO THE "FINISHED SURFACE".
9. THE SCALE IS TO THE "FINISHED SURFACE".
10. THE SCALE IS TO THE "FINISHED SURFACE".

THE DRAWING IS THE PROPERTY OF DERBYSHIRE CONSULTING ENGINEERS AND WILL BE LOANED TO YOU FOR THE PURPOSES OF THE PROJECT ONLY. IT IS NOT TO BE REPRODUCED OR USED FOR ANY OTHER PROJECT WITHOUT THE WRITTEN PERMISSION OF DERBYSHIRE CONSULTING ENGINEERS.

NO.	REVISION	DATE	BY	CHKD.
1	ISSUED FOR TENDERS	15/03/2011	DAVID HARVEY	DAVID HARVEY
2	REVISED TO REFLECT COMMENTS	22/03/2011	DAVID HARVEY	DAVID HARVEY
3	REVISED TO REFLECT COMMENTS	29/03/2011	DAVID HARVEY	DAVID HARVEY
4	REVISED TO REFLECT COMMENTS	05/04/2011	DAVID HARVEY	DAVID HARVEY
5	REVISED TO REFLECT COMMENTS	12/04/2011	DAVID HARVEY	DAVID HARVEY
6	REVISED TO REFLECT COMMENTS	19/04/2011	DAVID HARVEY	DAVID HARVEY
7	REVISED TO REFLECT COMMENTS	26/04/2011	DAVID HARVEY	DAVID HARVEY
8	REVISED TO REFLECT COMMENTS	03/05/2011	DAVID HARVEY	DAVID HARVEY
9	REVISED TO REFLECT COMMENTS	10/05/2011	DAVID HARVEY	DAVID HARVEY
10	REVISED TO REFLECT COMMENTS	17/05/2011	DAVID HARVEY	DAVID HARVEY

**DERBYSHIRE**  
County Council

DAVID HARVEY  
Director of Environmental Services

**DERBYSHIRE**  
CONSULTING  
ENGINEERS

PROJECT TITLE  
A6006  
LUXESTON - AINSWORTH  
LINK ROAD

CONTRACT TITLE  
PRELIMINARY GENERAL ARRANGEMENT  
EREWASH CANAL BRIDGE

100% Final  
Scale Number  
44211-50

Drawing Number  
441471/44211-50/04

£3.00

© Crown copyright 2005

Printed and published in the UK by The Stationery Office Limited  
under the authority and superintendence of Carol Tullo, Controller of  
Her Majesty's Stationery Office and Queen's Printer of Acts of Parliament.  
E0861 7/2005 150861 19585

ISBN 0-11-073076-3



9 780110 730769