

**2009 No 2826**

**HIGHWAYS, ENGLAND**

**The County Council of Somerset (River Tone Bridge)  
Scheme 2008 Confirmation Instrument 2009**

*Made - - - - - 19th October 2009*

*Coming into force in accordance with article 1*

The Secretary of State for Transport makes this Instrument in exercise of powers conferred by 106(3) of the Highways Act 1980(a) and now vested in him (b):

1. This Instrument may be cited as “The County Council of Somerset (River Tone Bridge) Scheme 2008 Confirmation Instrument 2009” and shall come into force on the date on which notice that it has been confirmed is first published in accordance with paragraph 1 of Schedule 2 to the Highways Act 1980.

2. The County Council of Somerset (River Tone Bridge) Scheme 2008 (“the Scheme”), and as set out in the Schedule, is hereby confirmed without modifications.

3. Copies of the Scheme with its accompanying plans are deposited at the offices of the Department for Transport, Floor 13 (IMD), Ashdown House, St Leonards on Sea, Hastings, East Sussex, TN37 7GA, and at the offices of the Council of the County of Somerset, County Hall, Taunton, Somerset TA1 3XZ.

Signed by authority of the Secretary of State for Transport.

19th October 2009

*J Blackie*  
Regional Director  
Government Office for the North East

---

(a) 1980 c.66.  
(b) S.I. 1981/238.

## THE SCHEDULE

### **The County Council of Somerset (River Tone Bridge) Scheme 2008**

The County Council of Somerset (hereinafter referred to as “the Council”) make this Scheme in exercise of their powers under Section 106(3) of the Highways Act 1980 and of all other powers enabling them in that behalf –

1. The Council are authorised to construct over the navigable waters of the River Tone the bridge specified in the Schedule to this Scheme as part of the highway they are proposing to construct and improve between A38 Wellington Road and A3027 Bridge Street in the Borough of Taunton in the said County.

2. This Scheme may be cited as the County Council of Somerset (River Tone Bridge) Scheme 2008.

Given under the Common Seal of the County Council of Somerset on the 20th day of October 2008.

THE COMMON SEAL of the Council  
of the County of Somerset was  
hereunto affixed in the presence of:

V J Corby  
Authorised Officer

## THE SCHEDULE TO THE SCHEME

### *Plans and Specifications of the River Tone Bridge*

The location and general design of the Bridge are shown on the plans numbered TTW/OR/F/007 and TTW/OR/F/008 marked ‘The County Council of Somerset (River Tone Bridge) Scheme 2008’.

### *Points of Commencement and Termination*

From a point on the north bank of the River Tone in Taunton, 263 metres south-west of the junction of Wood Street with Bridge Street.

To a point on the south bank of the River Tone in Taunton 300 metres south-west of the junction of Wood Street with Bridge Street.

### *Span*

Single span bridge. Clear span between faces of abutments of 34 metres (37.06 metres overall length of bridge).

### *Headway*

Not less than 3.7m above an assumed mean summer water level of 14.3 metres AOD (based on a Mean Summer Water Level of 13.3 metres AOD at Firepool Weir) and not less than 2.4 metres above the footpath, which runs along the north bank of the River Tone.

### *Waterway*

Existing minimum clear navigable waterway to be maintained (approximately 23 metres).

### *Overall Dimensions*

The Bridge will carry 2 footways, 2 cycle lanes and a single two lane carriageway.

The bridge will be 17.26 metres wide overall and will carry a 6.0 metres wide carriageway with 1.5m cycle lanes on either side and footways of 3.0 metres wide cantilevered on the outside of the vehicle incursion protection facility.

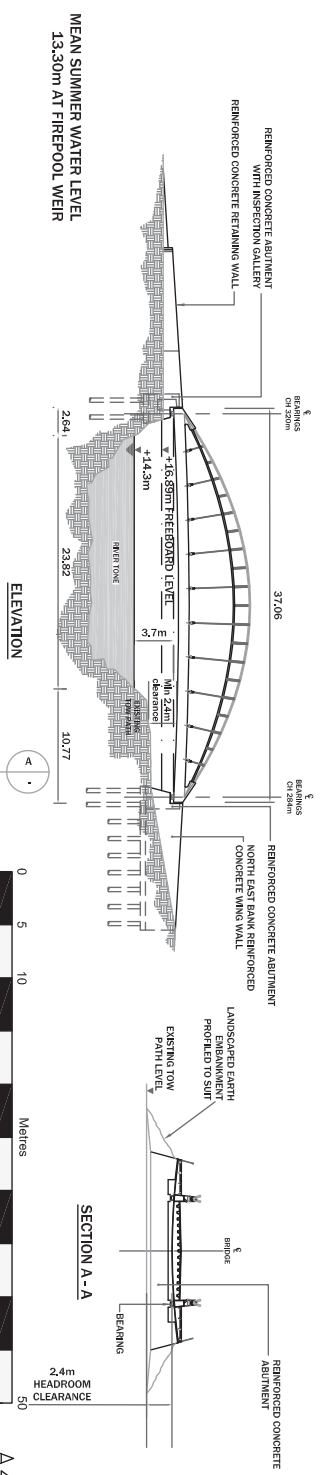
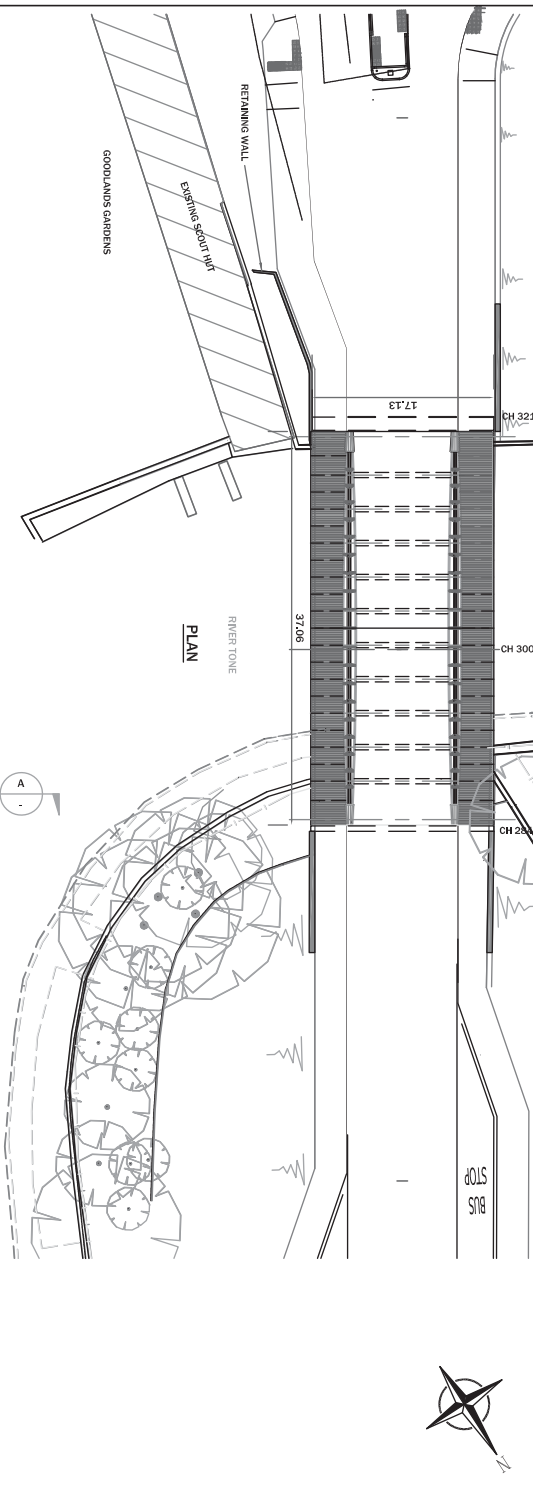
The vehicle incursion protection and the footway parapets make up the remainder of the bridge width.

## **EXPLANATORY NOTE**

*(This note is not part of the Instrument)*

This Instrument confirms a Scheme to construct over the navigable waters of the Tone river a bridge as part of the new and improved highway between Castle Street near its junction with the A38 Wellington Road to Wood Street and its junction with Bridge Street in the Borough of Taunton in the County of Somerset.

DO NOT SCALE CAD Ref File Ref



**SOMERSET**  
County Council

**SOMERSET COUNTY COUNCIL**

Rev	Description	By	Date	Chk'd	Auth

Project: **RAUNTON THIRD WAY GENERAL DIMENSIONS PLAN**

Title: **THE COUNTY COUNCIL OF SOMERSET (RIVER TONE BRIDGE) SCHEME 2008**

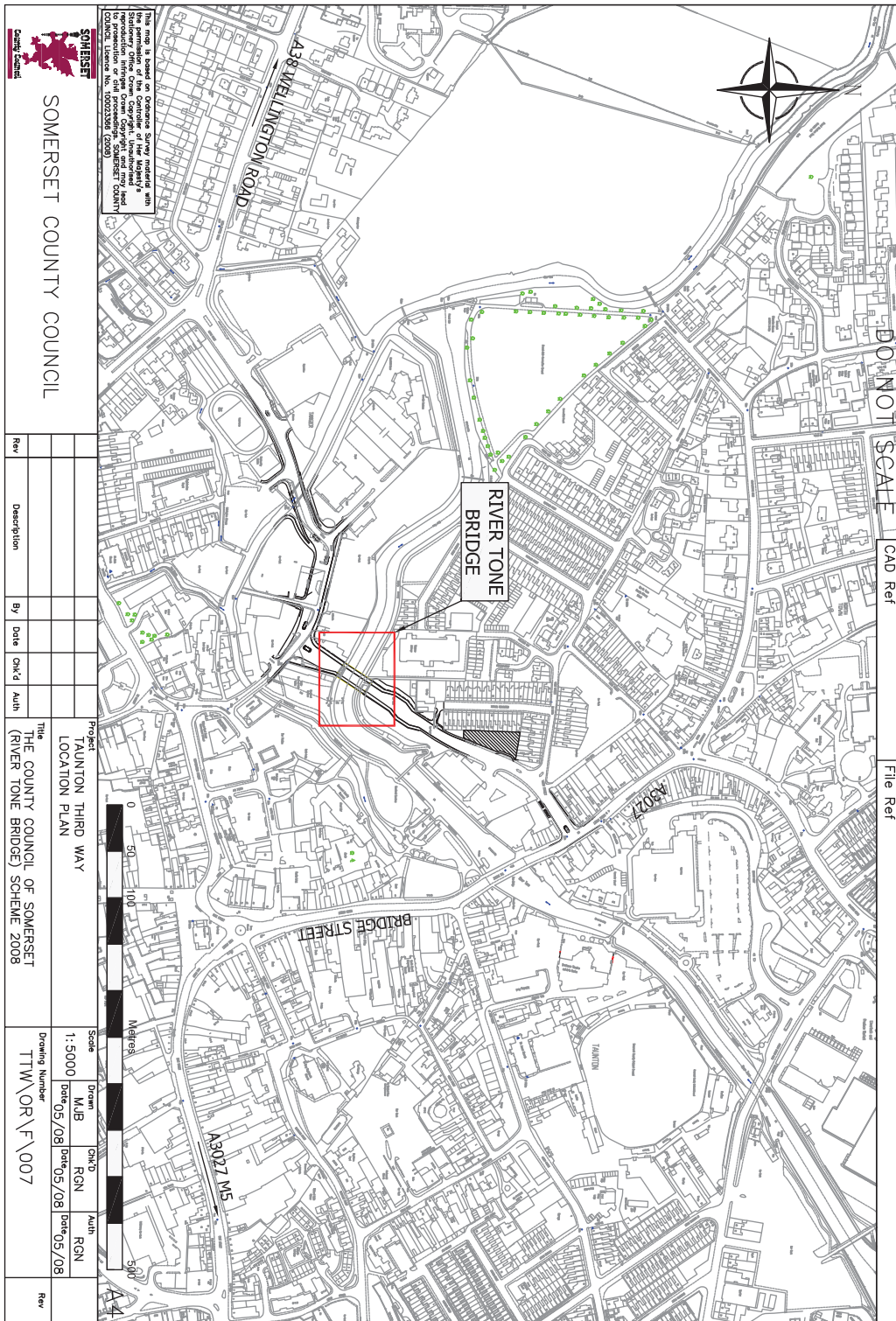
Drawing Number: **TTW\OR\F\008**

Scale	Drawn	Chk'd	Auth
1:500	MJB	RN	RN
	Date 05/08	Date 05/08	Date 05/08

Rev



A4



© Crown copyright 2009

Printed and published in the UK by The Stationery Office Limited under the authority and superintendence of Carol Tullo, Controller of Her Majesty's Stationery Office and Queen's Printer of Acts of Parliament.

**2009 No 2826**

**HIGHWAYS, ENGLAND**

The County Council of Somerset (River Tone Bridge)  
Scheme 2008 Confirmation Instrument 2009

£5.50

E4354 10/2009 194354 19585