

**Status:** Point in time view as at 06/04/2010.

**Changes to legislation:** There are outstanding changes not yet made by the legislation.gov.uk editorial team to The Rail Vehicle Accessibility (Non-Interoperable Rail System) Regulations 2010. Any changes that have already been made by the team appear in the content and are referenced with annotations. (See end of Document for details)

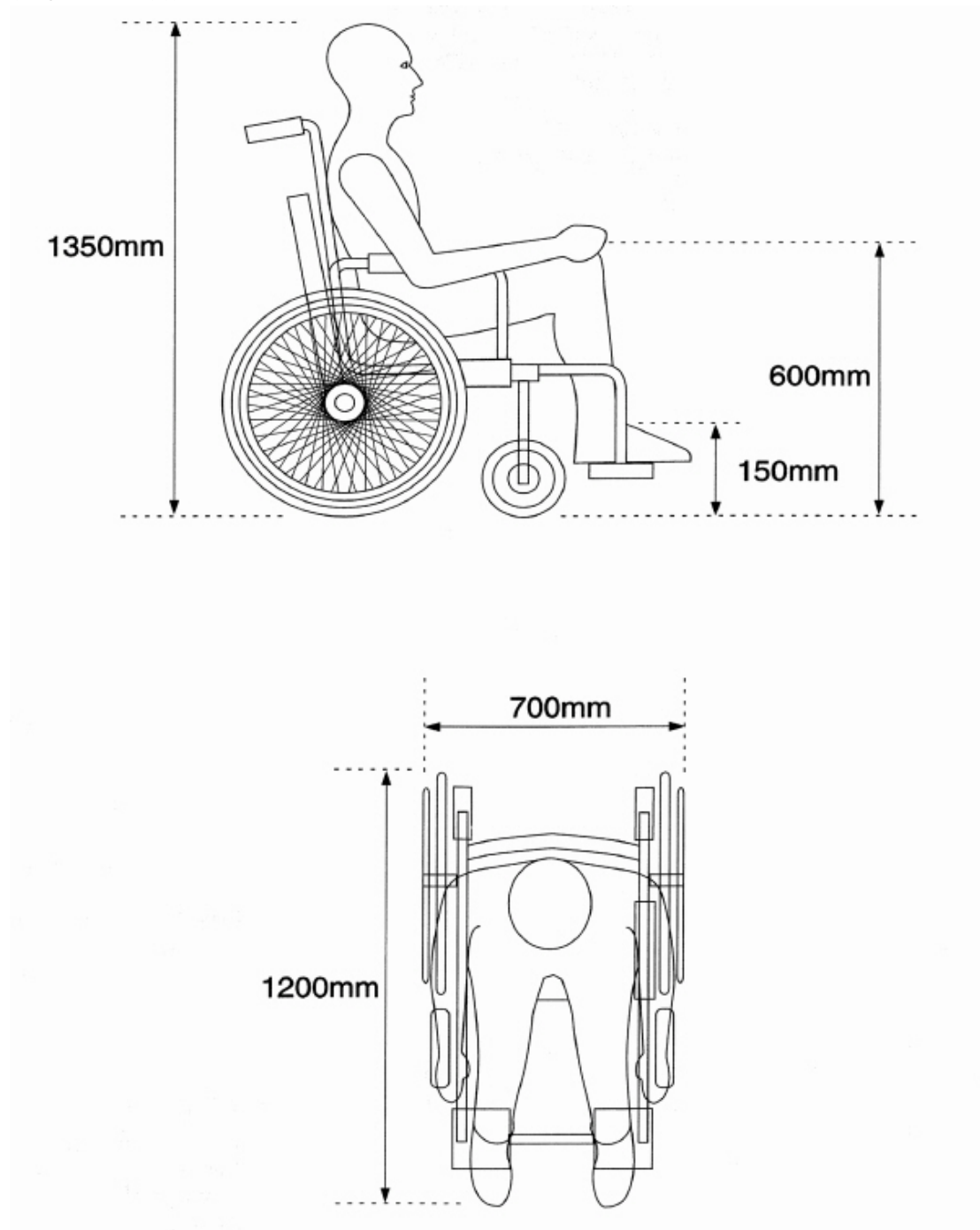
## SCHEDULE 2

### DIAGRAMS

(Note - diagrams are not to scale and measurements are given in millimetres)

#### Diagram A (reference wheelchair)

(Regulation 2(1))

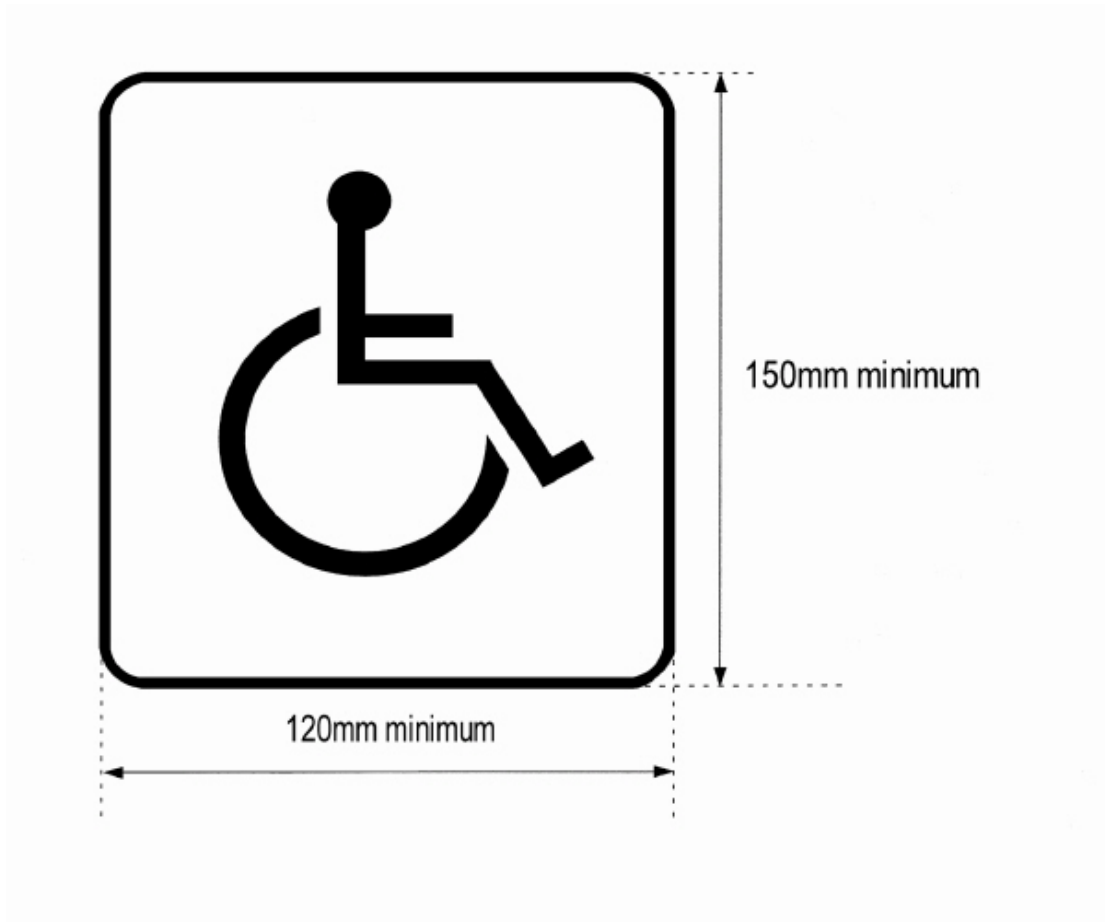


**Status:** Point in time view as at 06/04/2010.

**Changes to legislation:** There are outstanding changes not yet made by the legislation.gov.uk editorial team to The Rail Vehicle Accessibility (Non-Interoperable Rail System) Regulations 2010. Any changes that have already been made by the team appear in the content and are referenced with annotations. (See end of Document for details)

**Diagram B (wheelchair sign)**

(Schedule 1, paragraphs 6(3) and (4), 16(1) (a) and 20(7))

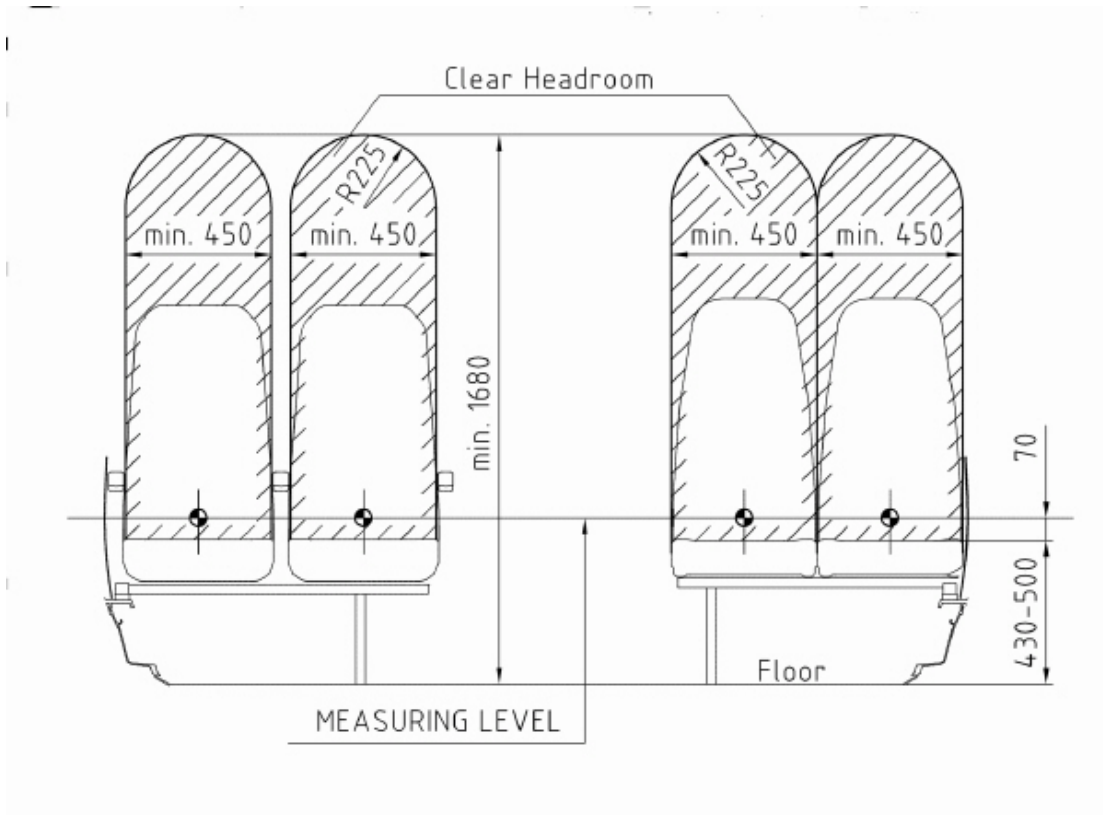


**Diagram C1 (priority seat)**

(Schedule 1, paragraph 13(3) and (7) (d))

**Status:** Point in time view as at 06/04/2010.

**Changes to legislation:** There are outstanding changes not yet made by the legislation.gov.uk editorial team to The Rail Vehicle Accessibility (Non-Interoperable Rail System) Regulations 2010. Any changes that have already been made by the team appear in the content and are referenced with annotations. (See end of Document for details)

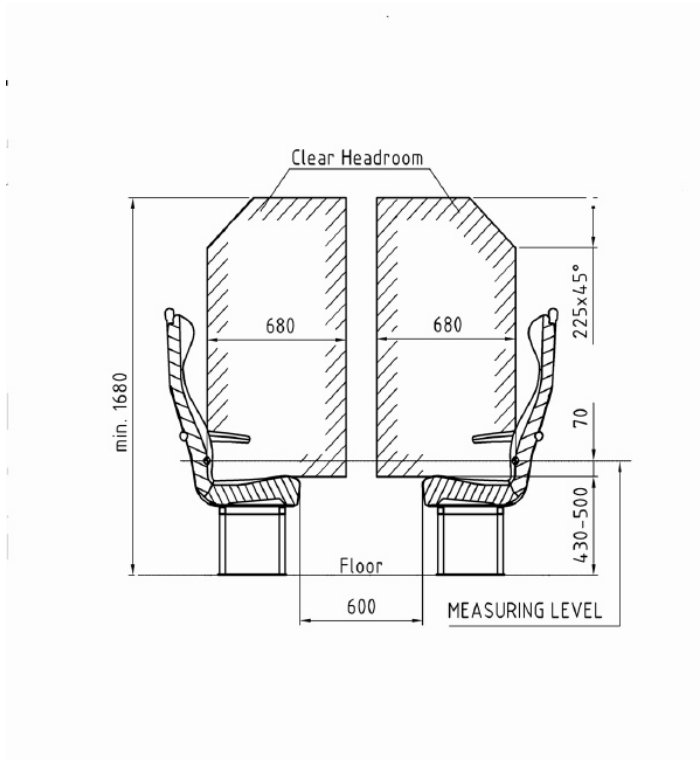


**Diagram C2 (facing seats without table)**

(Schedule 1, paragraph 13(3) and (7) (d))

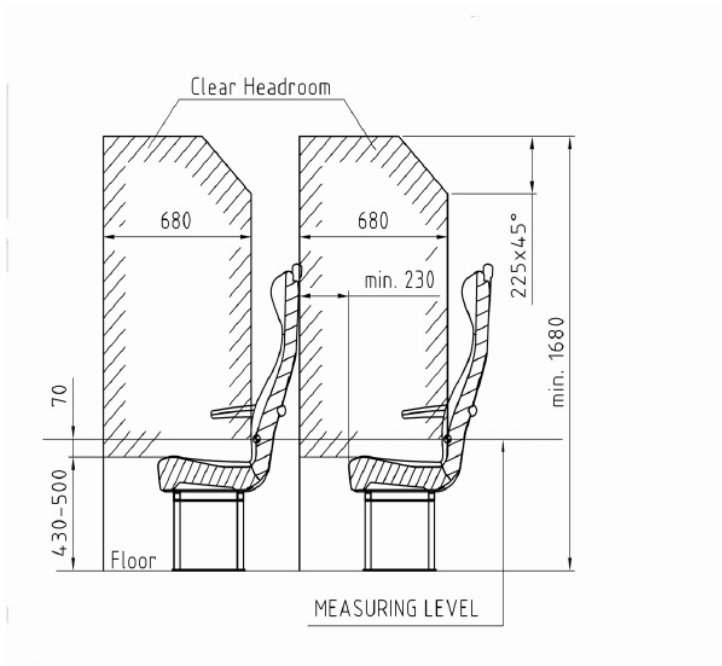
**Status:** Point in time view as at 06/04/2010.

**Changes to legislation:** There are outstanding changes not yet made by the legislation.gov.uk editorial team to The Rail Vehicle Accessibility (Non-Interoperable Rail System) Regulations 2010. Any changes that have already been made by the team appear in the content and are referenced with annotations. (See end of Document for details)



**Diagram C3 (non facing seats)**

(Schedule 1, paragraph 13(3) and (7) (d))

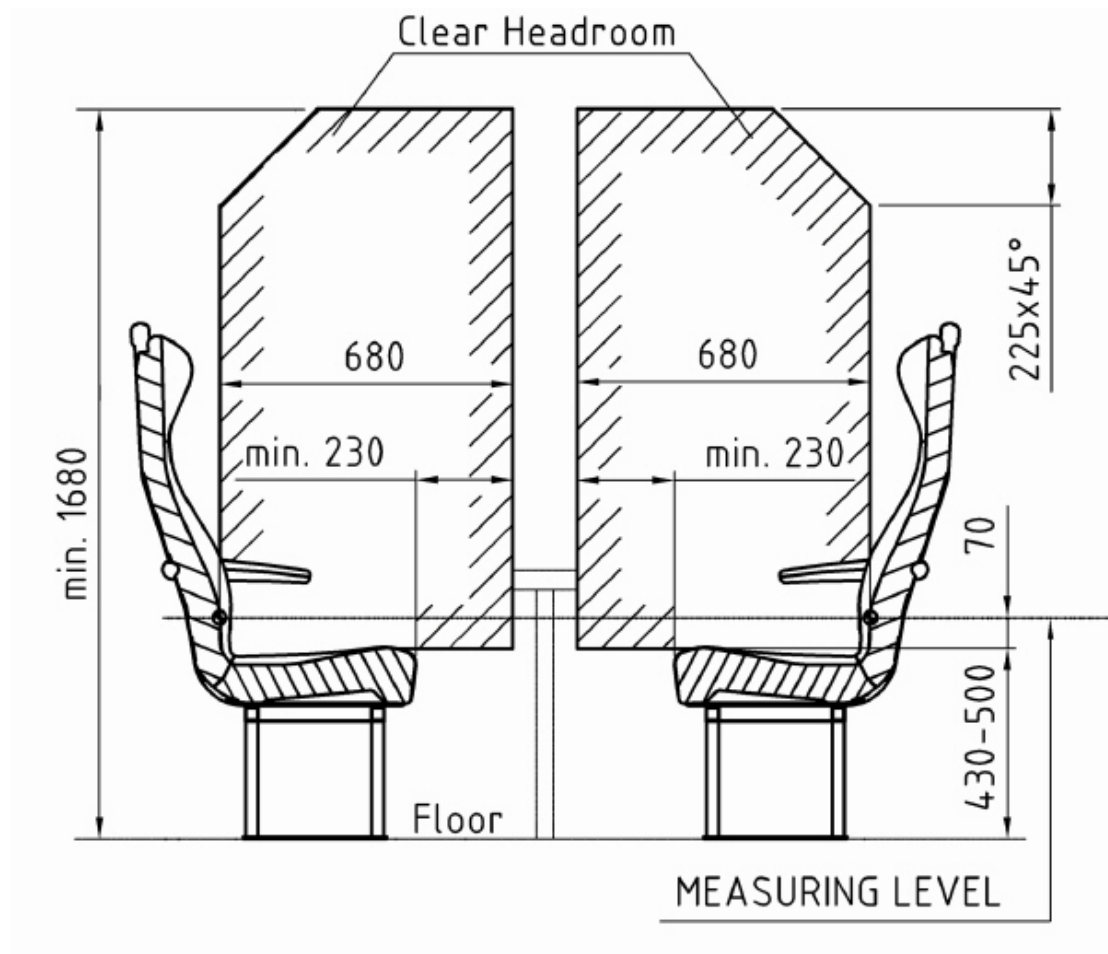


**Diagram C4 (facing seats with table)**

(Schedule 1, paragraph 13(3) and (7) (d))

**Status:** Point in time view as at 06/04/2010.

**Changes to legislation:** There are outstanding changes not yet made by the legislation.gov.uk editorial team to The Rail Vehicle Accessibility (Non-Interoperable Rail System) Regulations 2010. Any changes that have already been made by the team appear in the content and are referenced with annotations. (See end of Document for details)



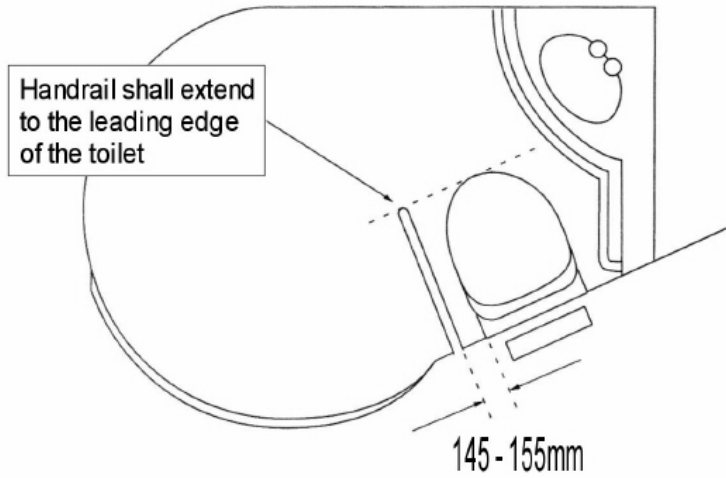
(Note: Minimum clearance of 230 mm required between edge of seat and edge of table to ensure passengers can access and exit seat space standing upright without having to bend their knees).

**Diagram D1 (hinged handrail – plan view)**

(Schedule 1, paragraph 16(1) (f) (iii))

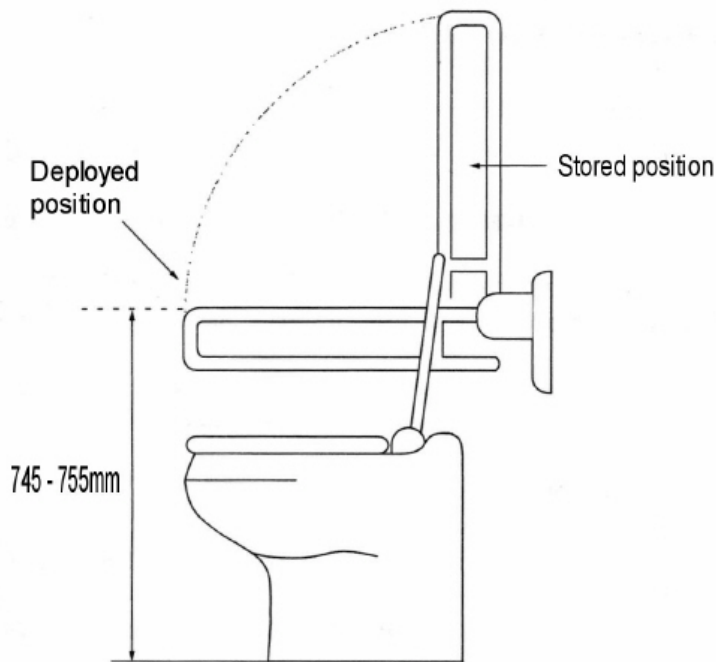
**Status:** Point in time view as at 06/04/2010.

**Changes to legislation:** There are outstanding changes not yet made by the legislation.gov.uk editorial team to The Rail Vehicle Accessibility (Non-Interoperable Rail System) Regulations 2010. Any changes that have already been made by the team appear in the content and are referenced with annotations. (See end of Document for details)



**Diagram D2 (hinged handrail - elevation)**

(Schedule 1, paragraph 16(1) (f) (iv))



**Diagram E (alternative wheelchair space sign)**

(Schedule 1, paragraph 20(7) and (8))

**Status:** Point in time view as at 06/04/2010.

**Changes to legislation:** There are outstanding changes not yet made by the [legislation.gov.uk](http://legislation.gov.uk) editorial team to The Rail Vehicle Accessibility (Non-Interoperable Rail System) Regulations 2010. Any changes that have already been made by the team appear in the content and are referenced with annotations. (See end of Document for details)



**Status:**

Point in time view as at 06/04/2010.

**Changes to legislation:**

There are outstanding changes not yet made by the legislation.gov.uk editorial team to The Rail Vehicle Accessibility (Non-Interoperable Rail System) Regulations 2010. Any changes that have already been made by the team appear in the content and are referenced with annotations.