

Document Generated: 2024-07-04

**Changes to legislation:** *There are currently no known outstanding effects for the The Port Security (Port of Bramble Island Dock, Felixstowe, Harwich, Harwich International, Ipswich and Mistley Quay) Designation Order 2014, SCHEDULE 1. (See end of Document for details)*

## SCHEDULE 1

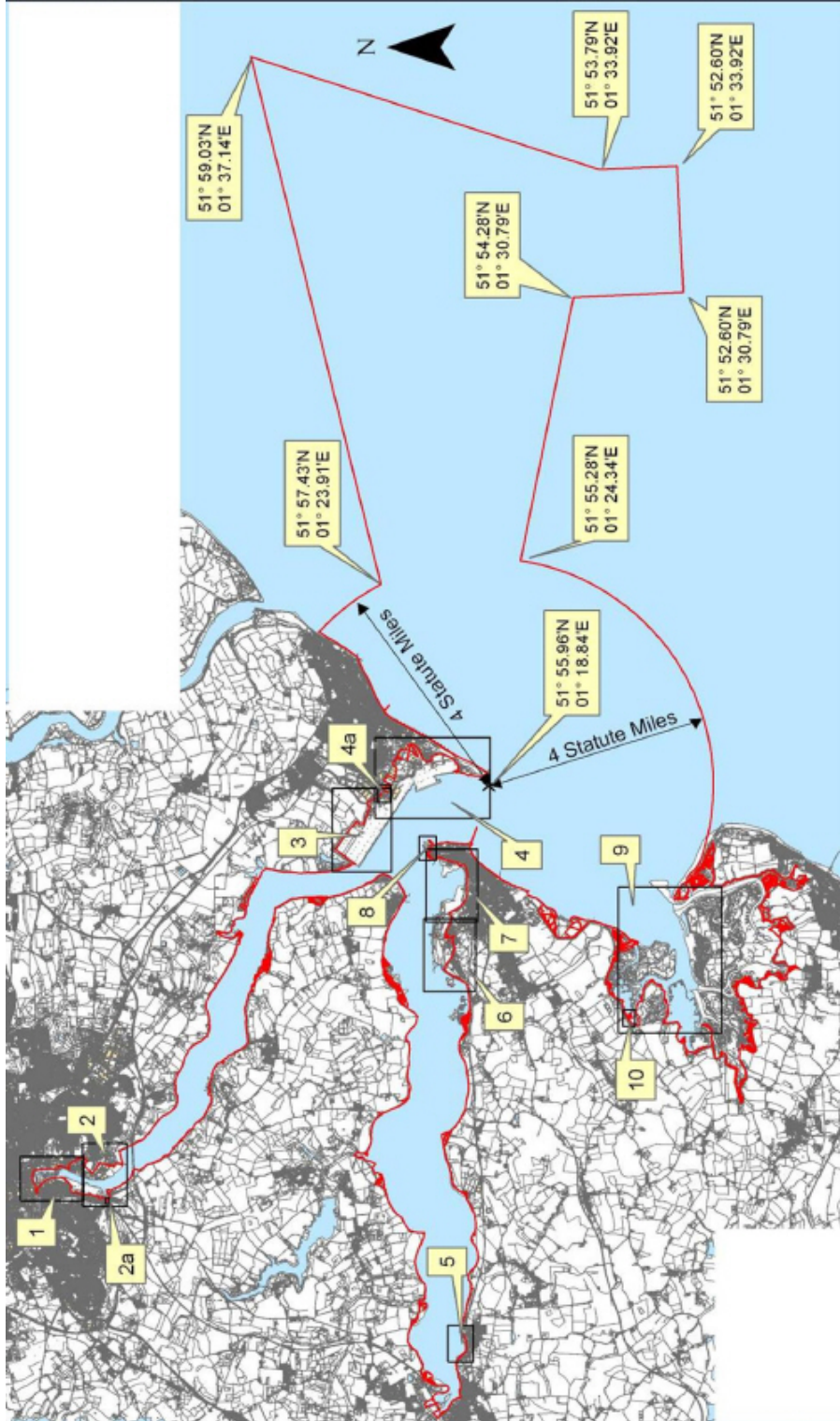
Article 2

Article 2(2)

**Changes to legislation:** There are currently no known outstanding effects for the The Port Security (Port of Bramble Island Dock, Felixstowe, Harwich, Harwich International, Ipswich and Mistley Quay) Designation Order 2014, SCHEDULE 1. (See end of Document for details)

## PART 1

Boundary of the Port of Bramble Island Dock, Felixstowe, Harwich, Harwich International, Ipswich and Mistley Quay

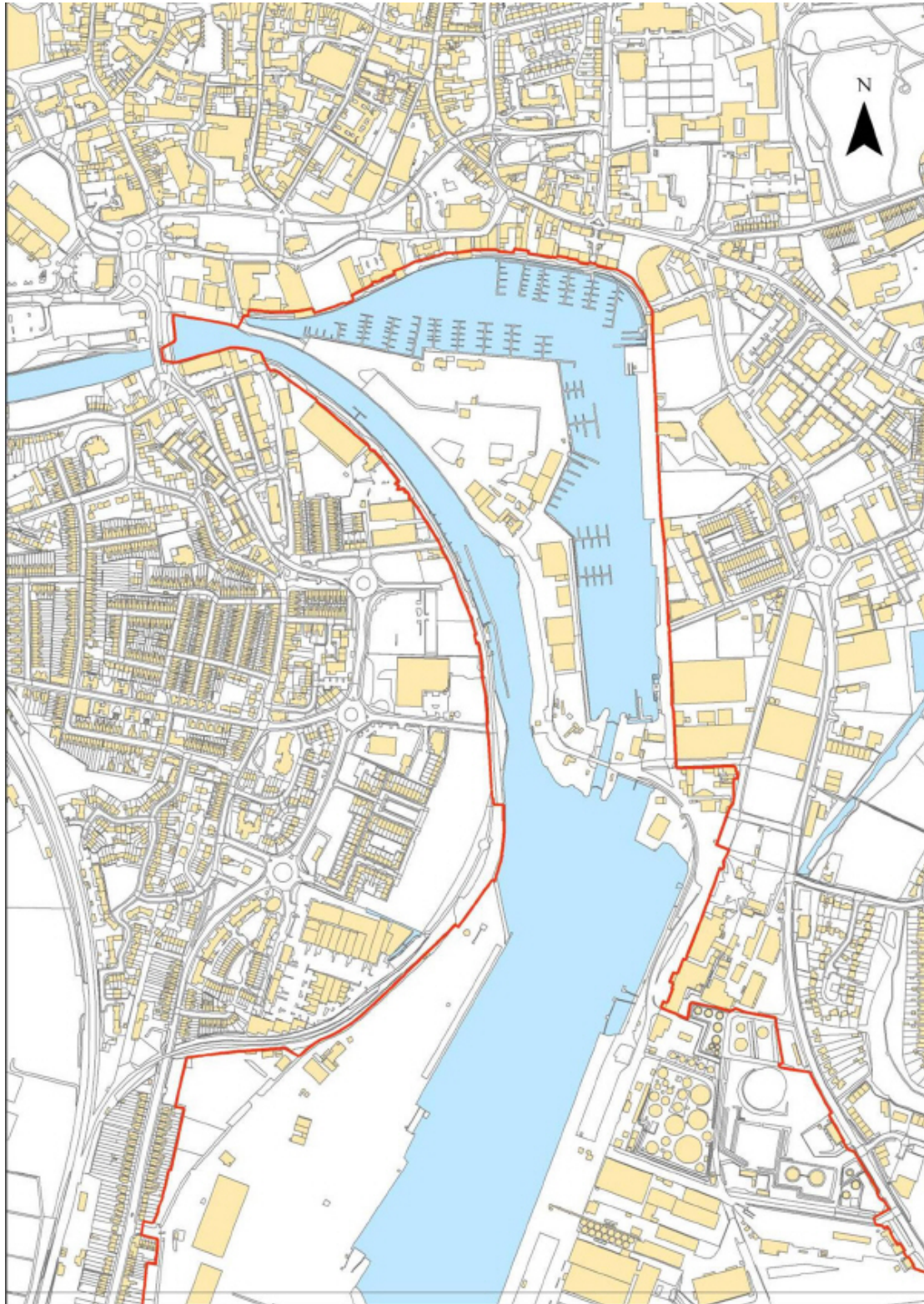


Article 2(3)

**Changes to legislation:** There are currently no known outstanding effects for the The Port Security (Port of Bramble Island Dock, Felixstowe, Harwich, Harwich International, Ipswich and Mistley Quay) Designation Order 2014, SCHEDULE 1. (See end of Document for details)

## PART 2

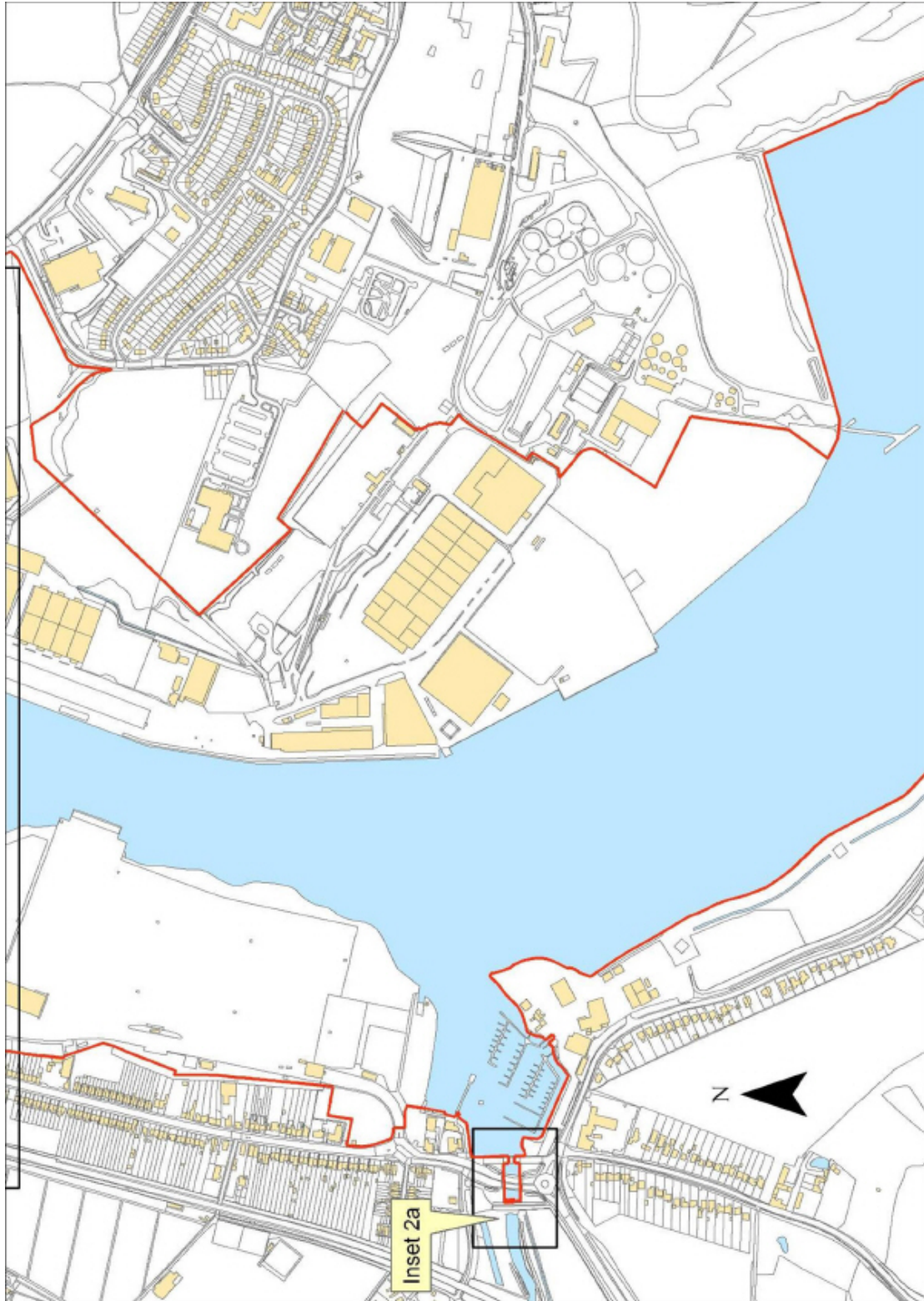
### Inset Plan 1





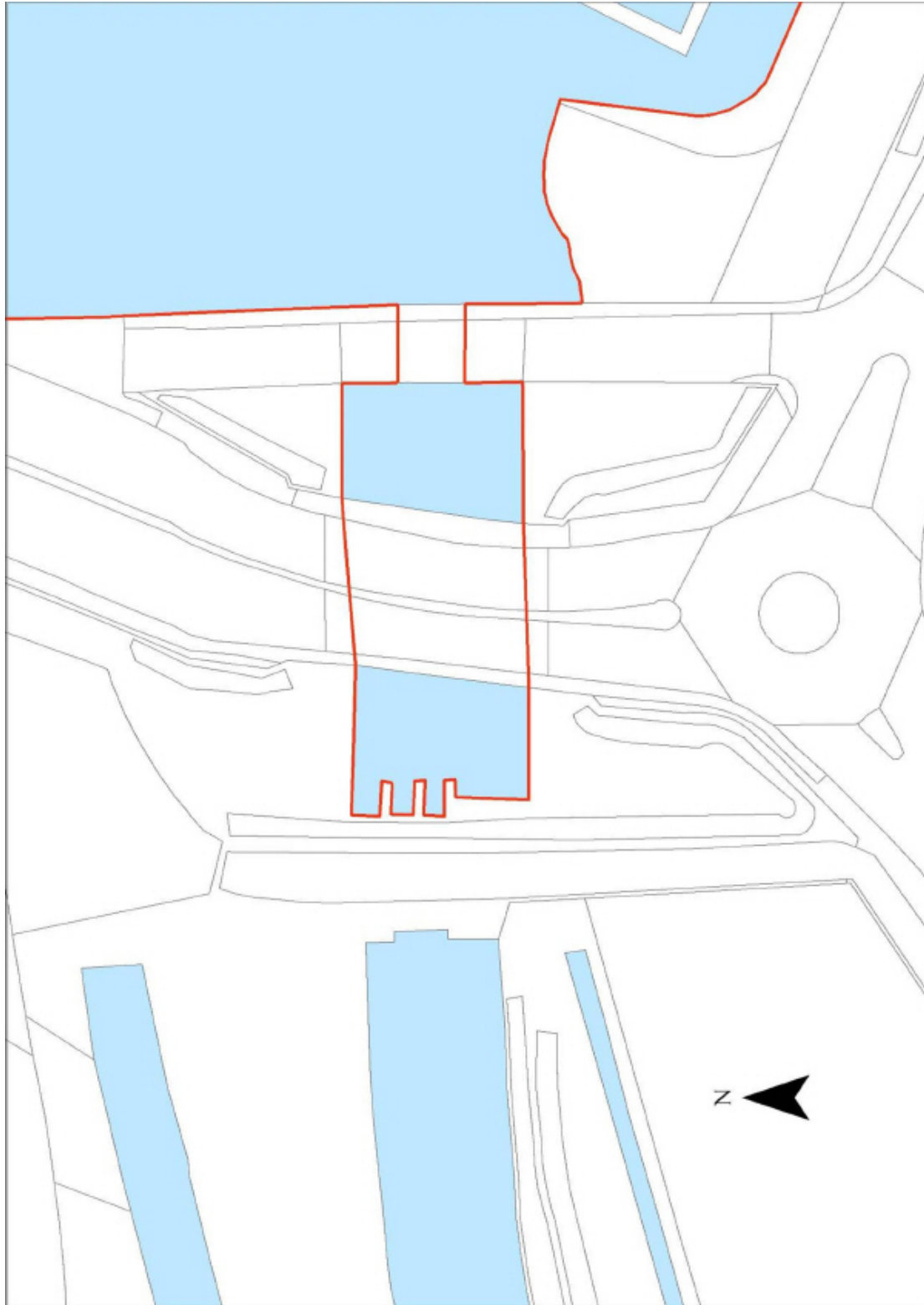
**Changes to legislation:** There are currently no known outstanding effects for the The Port Security (Port of Bramble Island Dock, Felixstowe, Harwich, Harwich International, Ipswich and Mistley Quay) Designation Order 2014, SCHEDULE 1. (See end of Document for details)

Inset Plan 2



**Changes to legislation:** There are currently no known outstanding effects for the The Port Security (Port of Bramble Island Dock, Felixstowe, Harwich, Harwich International, Ipswich and Mistley Quay) Designation Order 2014, SCHEDULE 1. (See end of Document for details)

Inset Plan 2a



**Changes to legislation:** There are currently no known outstanding effects for the The Port Security (Port of Bramble Island Dock, Felixstowe, Harwich, Harwich International, Ipswich and Mistley Quay) Designation Order 2014, SCHEDULE 1. (See end of Document for details)

Inset Plan 3





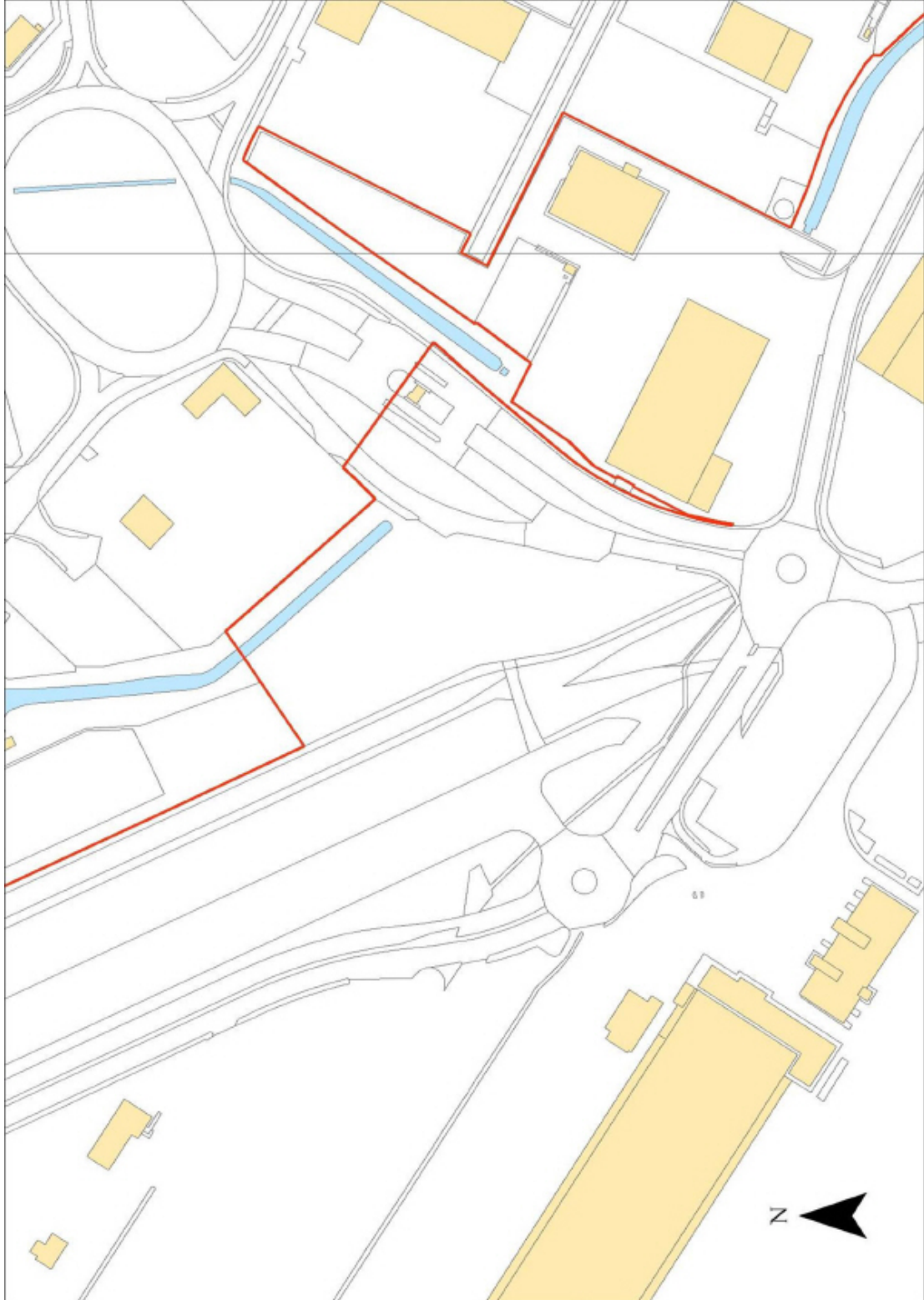
**Changes to legislation:** There are currently no known outstanding effects for the The Port Security (Port of Bramble Island Dock, Felixstowe, Harwich, Harwich International, Ipswich and Mistley Quay) Designation Order 2014, SCHEDULE 1. (See end of Document for details)

Inset Plan 4



**Changes to legislation:** There are currently no known outstanding effects for the The Port Security (Port of Bramble Island Dock, Felixstowe, Harwich, Harwich International, Ipswich and Mistley Quay) Designation Order 2014, SCHEDULE 1. (See end of Document for details)

Inset Plan 4a





**Changes to legislation:** There are currently no known outstanding effects for the The Port Security (Port of Bramble Island Dock, Felixstowe, Harwich, Harwich International, Ipswich and Mistley Quay) Designation Order 2014, SCHEDULE 1. (See end of Document for details)

Inset Plan 5



**Changes to legislation:** There are currently no known outstanding effects for the The Port Security (Port of Bramble Island Dock, Felixstowe, Harwich, Harwich International, Ipswich and Mistley Quay) Designation Order 2014, SCHEDULE 1. (See end of Document for details)

Inset Plan 6



**Changes to legislation:** There are currently no known outstanding effects for the The Port Security (Port of Bramble Island Dock, Felixstowe, Harwich, Harwich International, Ipswich and Mistley Quay) Designation Order 2014, SCHEDULE 1. (See end of Document for details)

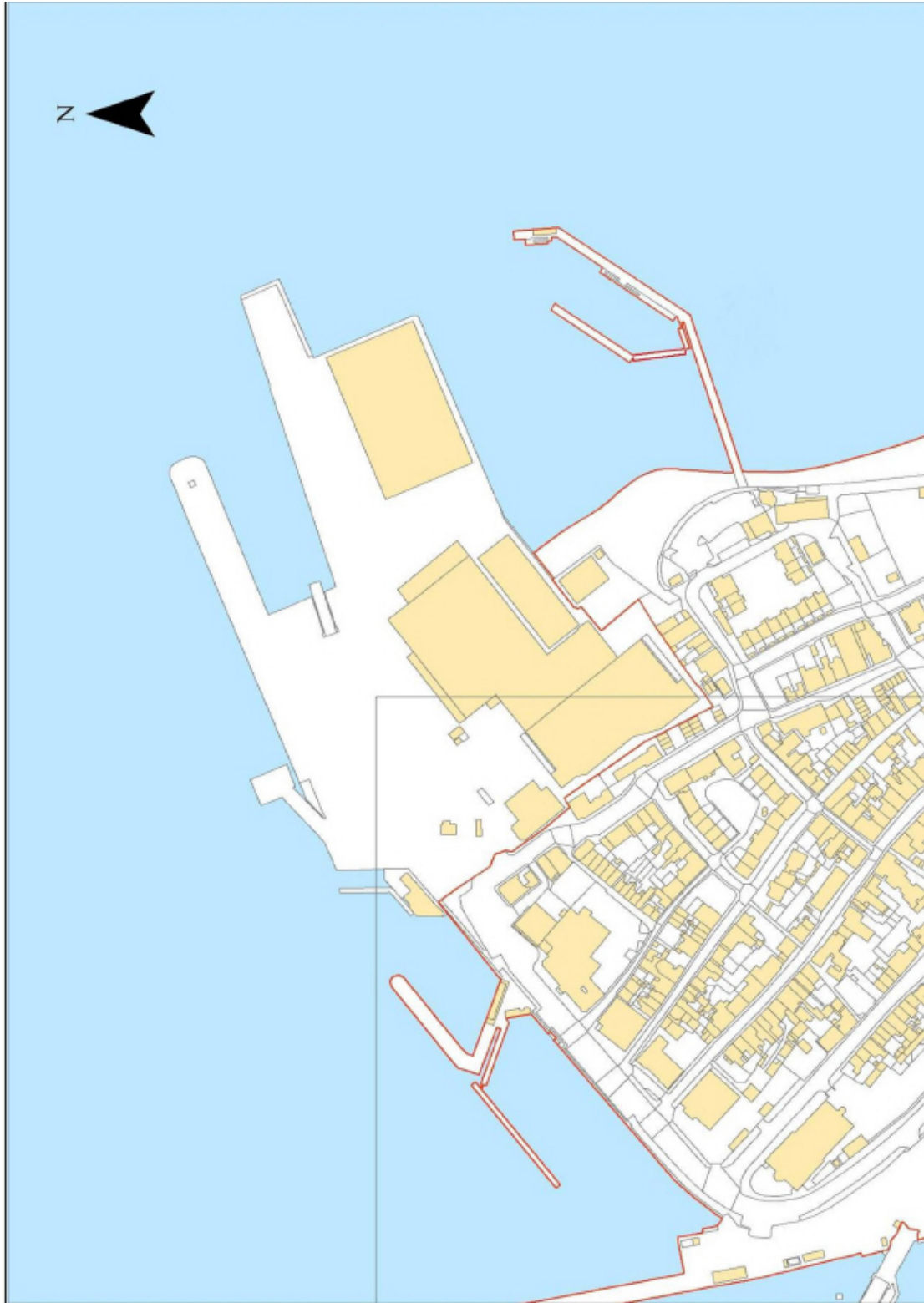
Inset Plan 7





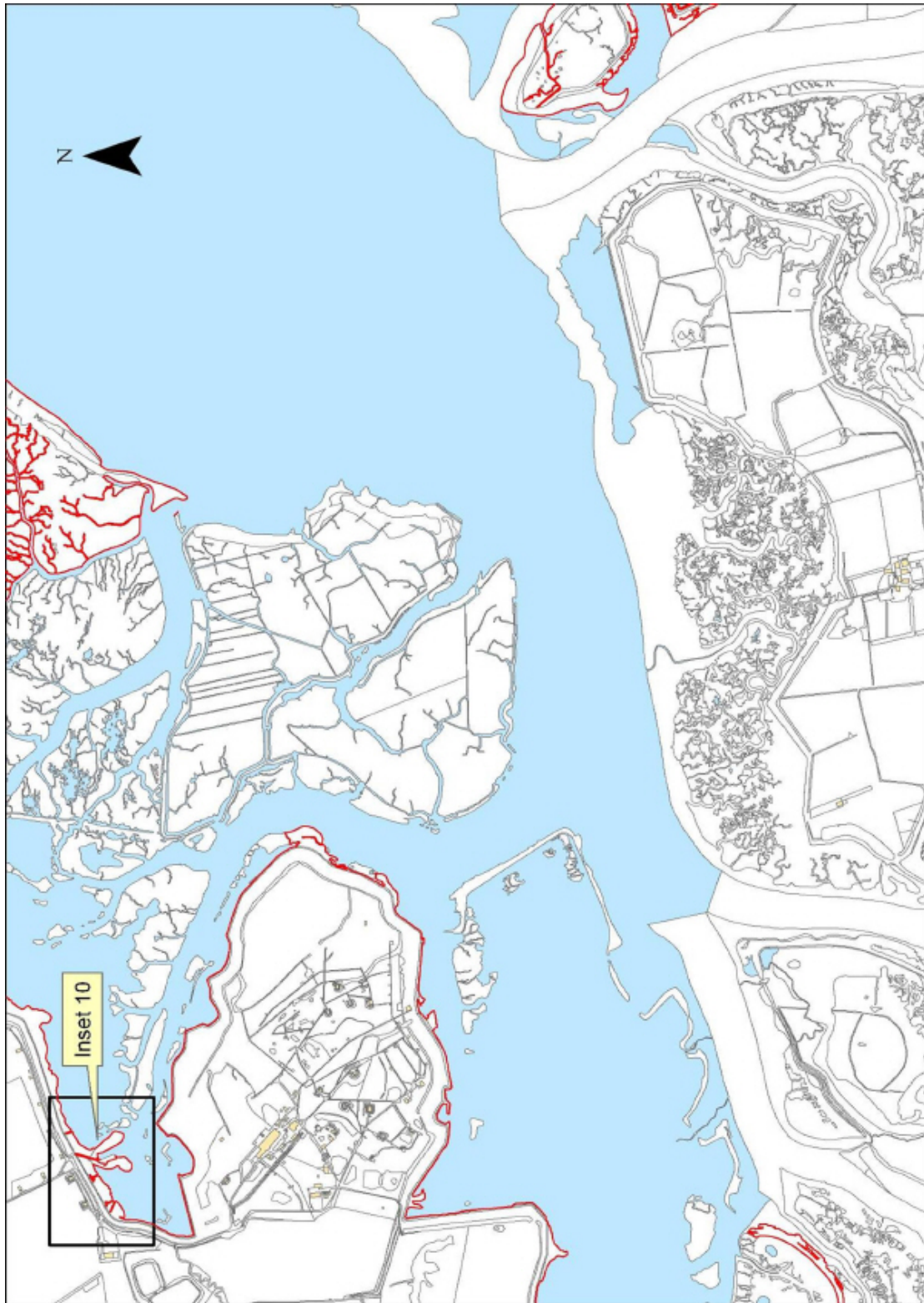
**Changes to legislation:** There are currently no known outstanding effects for the The Port Security (Port of Bramble Island Dock, Felixstowe, Harwich, Harwich International, Ipswich and Mistley Quay) Designation Order 2014, SCHEDULE 1. (See end of Document for details)

Inset Plan 8



**Changes to legislation:** There are currently no known outstanding effects for the The Port Security (Port of Bramble Island Dock, Felixstowe, Harwich, Harwich International, Ipswich and Mistley Quay) Designation Order 2014, SCHEDULE 1. (See end of Document for details)

Inset Plan 9



**Changes to legislation:** There are currently no known outstanding effects for the The Port Security (Port of Bramble Island Dock, Felixstowe, Harwich, Harwich International, Ipswich and Mistley Quay) Designation Order 2014, SCHEDULE 1. (See end of Document for details)

Inset Plan 10





**Changes to legislation:**

There are currently no known outstanding effects for the The Port Security (Port of Bramble Island Dock, Felixstowe, Harwich, Harwich International, Ipswich and Mistley Quay) Designation Order 2014, SCHEDULE 1.