

2015 No. 1824

HIGHWAYS, ENGLAND

The Cambridgeshire County Council (A142 Ely Southern Bypass) Bridge Scheme 2015 Confirmation Instrument 2015

Made - - - - *8th October 2015*

Coming into force in accordance with article 1

The Secretary of State for Transport, makes this Instrument in exercise of the powers conferred by section 106(3) of the Highways Act 1980(a), and now vested in the Secretary of State(b):

1. This Instrument may be cited as “The Cambridgeshire County Council (A142 Ely Southern Bypass) Bridge Scheme 2015 Confirmation Instrument 2015” and shall come into force on the date on which notice that it has been confirmed is first published in accordance with paragraph 1 of Schedule 2 to the Highways Act 1980.

2. The Cambridgeshire County Council (A142 Ely Southern Bypass) Bridge Scheme 2015 (“the Scheme”) is hereby confirmed.

3. The Scheme as confirmed is set out in the Schedule hereto (including the plan) and copies of the Scheme with its accompanying plan are deposited at the offices of the Department for Transport, Floor 13 (IMD), Ashdown House, St Leonards on Sea, Hastings, East Sussex, TN37 7GA and at the offices of Cambridgeshire County Council, Shire Hall, Castle Hill, Cambridge, CB3 0AP.

Signed by authority of the Secretary of State for Transport

C J Miller
A Senior Civil Servant in the Department for Transport

8th October 2015

SCHEDULE

Regulation 3

THE CAMBRIDGESHIRE COUNTY COUNCIL (A142 ELY SOUTHERN BYPASS) BRIDGE SCHEME 2015

The Cambridgeshire County Council (hereinafter referred to as “the Council”) make this Scheme in exercise of their powers under Section 106(3) of the Highways Act 1980 and of all other powers enabling them in that behalf—

1. The Council are authorised to construct over the navigable waters of the River Great Ouse the bridge specified in the Schedule to this Scheme as part of the highway which they are proposing to construct between Angel Drove and Stuntney Causeway Ely in the County of Cambridgeshire.

2. This Scheme may be cited as The Cambridgeshire County Council (A142 Ely Southern Bypass) Bridge Scheme 2015.

THE COMMON SEAL of

the COUNCIL was hereunto affixed

this 7th day of May 2015

in the presence of:-

Authorised Signatory

SCHEDULE TO THE SCHEME

Regulation 3

Specification and plans of the highway viaduct and bridge over the River Great Ouse within the Parish of Ely within the District of East Cambridgeshire within the County of Cambridgeshire as shown on Drawing Number 5106611/BR/01/NO/1000 rev P1.

POINTS OF COMMENCEMENT AND TERMINATION OF THE RIVER SPAN

A142 ANGEL DROVE APPROACH – CENTRELINE OF THE WEST PIER

Commencing from a point on the west bank of the River Great Ouse 35.2m east of the NW outer corner of the main (river) span of the Newmarket Bridge and 368.3m north (370.0m direct point to point).

A142 STUNTNEY CAUSEWAY APPROACH – CENTRELINE OF THE EAST PIER

Terminating at a point on the east bank of the River Great Ouse 85.5m east of the NW outer corner of the Main (river) span of the Newmarket Bridge and 390.5m north (399.8m direct point to point).

NAVIGATION SPAN

The bridge has a minimum clear span of 41.1m (between riverside ends of the V – Pier support arms) and spans on a skew of approximately 30 degree across the entire width of the River Great Ouse (41m approx.)

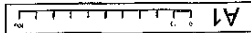
HEADWAY AND WATERWAY

A 20m wide unrestricted navigation channel about the centre of the River Great Ouse is maintained.

The minimum soffit level of the bridge above the navigation channel is 5.57m AOD, providing a 970mm clearance above the current air-draft requirement.

51066118R/03/INC/1000 P1

DO NOT SCALE



A1

Bridge Scheme - Ely Southern Bypass (Highway) & Bridge

The Scheme for the Bypass and Bridge is shown on the Plans of this scheme and the Plans of the other schemes within the County of Cambridgeshire.

SOUTH ELEVATION AND TYPICAL SECTION OF THE BRIDGE

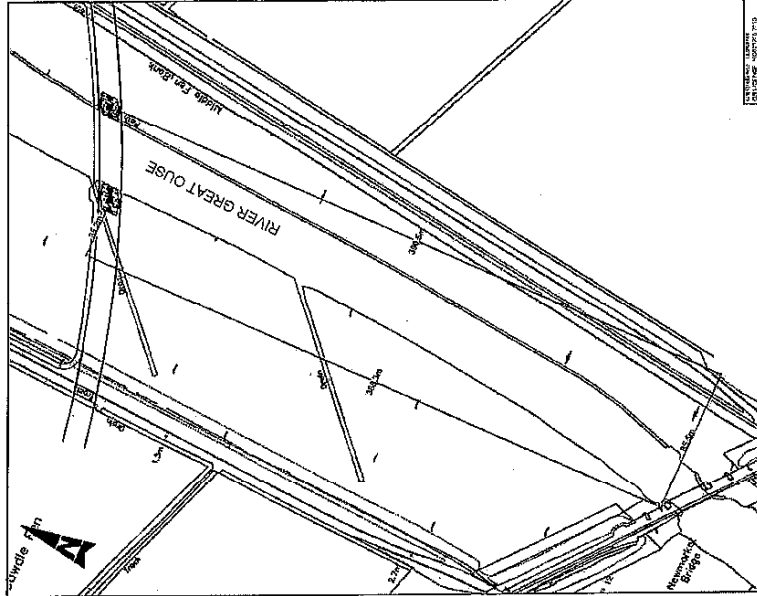
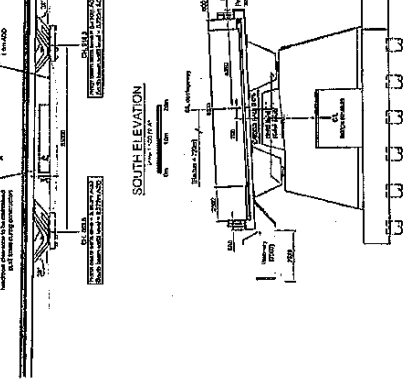
From a point on the west bank of the River Great Ouse 35.2m north of the east pier of the River Great Ouse Bridge and 300.0m north of the east pier of the River Great Ouse Bridge.

A142 STAINLEY CAUSEWAY APPROACH - CENTRELINE OF THE EAST PIER

From a point on the east bank of the River Great Ouse 35.2m north of the east pier of the River Great Ouse Bridge and 300.0m north of the east pier of the River Great Ouse Bridge.

SECTIONAL ELEVATION

This drawing will show the elevation of the bridge above the proposed channel to 5.57m AOD, providing a minimum clearance above the current average high water level.



PLAN
Scale 1:1000

<p>SWANSEA A Member of Crest Nicholson Group</p>		<p>Cambridgeshire County Council A142 Ely Southern Bypass</p>	
<p>Project No: 51066118R/03/INC/1000</p>		<p>Sheet No: P1</p>	
<p>Author: [Name]</p>		<p>Check: [Name]</p>	
<p>Date: [Date]</p>		<p>Scale: 1:1000</p>	
<p>Drawn: [Name]</p>		<p>Checked: [Name]</p>	
<p>Approved: [Name]</p>		<p>Reviewed: [Name]</p>	

EXPLANATORY NOTE

(This note is not part of the Instrument)

This instrument confirms a scheme to construct over the navigable waters of the River Great Ouse the bridge specified in the Schedule to this Scheme as part of the highway which they are proposing to construct between Angel Drove and Stuntney Causeway Ely in the County of Cambridgeshire.

The Secretary of State has modified this Scheme as follows:

(1) The title of the Scheme ‘CAMBRIDGESHIRE COUNTY COUNCIL (A142 ELY SOUTHERN BYPASS) BRIDGE SCHEME 2015’ has been amended to ‘THE CAMBRIDGESHIRE COUNTY COUNCIL (A142 ELY SOUTHERN BYPASS) BRIDGE SCHEME 2015’.

(2) In the second line of paragraph 1 on the first page ‘the Schedule to this Order’ has been amended to ‘the Schedule to this Scheme’.

(3) The title of the Scheme on the second page ‘Navigation Order’ has been amended to ‘Bridge Scheme’.

(4) In the second paragraph on the third page ‘From a point on the west bank’ has been amended to ‘Commencing from a point on the west bank’.

(5) In the third paragraph on the third page ‘From a point on the east bank’ has been amended to ‘Terminating at a point on the east bank’.

(6) The title of the Scheme on Plan 5106611/BR/01/NO/1000 rev P1 ‘Cambridgeshire County Council (A142 Ely Southern Bypass) Bridge Scheme 2015’ has been amended to ‘The Cambridgeshire County Council (A142 Ely Southern Bypass) Bridge Scheme 2015’.

(7) The description of the Scheme on the Plan ‘Navigation Order’ has been amended to ‘Bridge Scheme’.

(8) The name of the River on the Plan ‘Great River Ouse’ has been amended to ‘River Great Ouse’.

© Crown copyright 2015

Printed and published in the UK by The Stationery Office Limited under the authority and superintendence of Carol Tullo, Controller of Her Majesty’s Stationery Office and Queen’s Printer of Acts of Parliament.

£4.25

UK201510153 10/2015 19585

<http://www.legislation.gov.uk/id/uksi/2015/1824>

ISBN 978-0-11-114017-8



9 780111 140178