

2019 No. 206

HIGHWAYS, ENGLAND

**The Cambridgeshire County Council (Construction of
Cambridge Chesterton / Abbey Foot / Cycle Bridge) Scheme
2018 Confirmation Instrument 2019**

Made - - - - *31st January 2019*

Coming into force in accordance with article 1

The Secretary of State for Transport, makes this Instrument in exercise of the powers conferred by section 106(3) of the Highways Act 1980(a), and now vested in the Secretary of State(b):

1. This Instrument may be cited as “The Cambridgeshire County Council (Construction of Cambridge Chesterton / Abbey Foot / Cycle Bridge) Scheme 2018 Confirmation Instrument 2019” and shall come into force on the date on which notice that it has been confirmed is first published in accordance with paragraph 1 of Schedule 2 to the Highways Act 1980.

2. The Cambridgeshire County Council (Construction of Cambridge Chesterton / Abbey Foot / Cycle Bridge) Scheme 2018, and as set out in the Schedule, is hereby confirmed with modifications.

3. The Scheme as confirmed is set out in the Schedule (including the plan) and copies of the Scheme with its accompanying plan are deposited at the offices of the Department for Transport, Floor 13 (IMD), Ashdown House, St Leonards on Sea, Hastings, East Sussex TN37 7GA and at the offices of the Cambridgeshire County Council, Shire Hall, Castle Hill, Cambridge CB3 0AP.

Signed by authority of the Secretary of State for Transport

31st January 2019

A. Rhind
A Senior Civil Servant
Department for Transport

(a) 1980 c. 66. Section 106(3) is amended by the Infrastructure Act 2015 (c. 7), paragraph 34(2) of Schedule 1(1).
(b) S.I. 1981/238

THE SCHEDULE

Regulation 3

THE CAMBRIDGESHIRE COUNTY COUNCIL (CONSTRUCTION OF CAMBRIDGE CHESTERTON / ABBEY FOOT / CYCLE BRIDGE) SCHEME 2018

The Cambridgeshire County Council (hereinafter referred to as “the Council”) makes this Scheme in exercise of their powers under Section 106(3) of the Highways Act 1980 and of all other powers enabling them in that behalf.

1. The Council are authorised to construct over the navigable waters of the River Cam the bridge specified in the Schedule to this Scheme as part of the highway which they are proposing to construct between the Chesterton and the Abbey wards of Cambridge in the said County.

2. The Scheme may be cited as the Cambridgeshire County Council (Construction of Cambridge Chesterton / Abbey Foot / Cycle Bridge) Scheme 2018.

Given under the common seal of the Council on the 15th day of May 2018

THE COMMON SEAL of the COUNCIL
was hereunto affixed in the presence of

C.S

Authorised Signatory

PLANS AND SPECIFICATIONS OF CAMBRIDGE CHESTERTON / ABBEY FOOT / CYCLE BRIDGE (SCHEME 2018)

The location and general plan layout of Chesterton/ Abbey Bridge are shown on the plan marked “The Cambridgeshire County Council (Construction of Cambridge Chesterton / Abbey foot / cycle bridge) Scheme 2018” sealed with the Common Seal of the Cambridgeshire County Council and deposited at Shire Hall, Castle Hill, Cambridge CB3 0AP.

POINTS OF COMMENCEMENT AND TERMINATION

North Approach – Top of the North Abutment

Commencing from a point on the North bank of the River Cam 42.23 metres east of the existing railway bridge and situated on the Halingway towing path.

Ditton Meadows Approach – Top of the South Abutment

Terminating at a point on the South bank of the River Cam, 35.79 metres east of the existing railway bridge where the new bridge approach meets the existing Jubilee Cycle Path (Sustrans National Cycle Route 51).

Navigation Span

The bridge has a clear span of 44 metres (between abutments), spanning diagonally across the entire width of the River Cam (25 metres approx.). The bridge runs parallel and to the east of the Chesterton railway bridge. It will be constructed 10 metres away from the railway bridge.

Headway and Waterway

The navigation waterway is unrestricted for the full width of the river except where locally constrained by the jetty beneath the existing railway bridge. At which point the Waterway measures 28.97m. The soffit level of the bridge is +7.03m AOD, giving a 3.17m clearance above the current air-draught requirement set by the nearby Chesterton railway bridge.

Overall Dimensions

The proposed bridge consists of a segregated deck surface of separate lanes for pedestrian and cycle traffic separated by a white line.

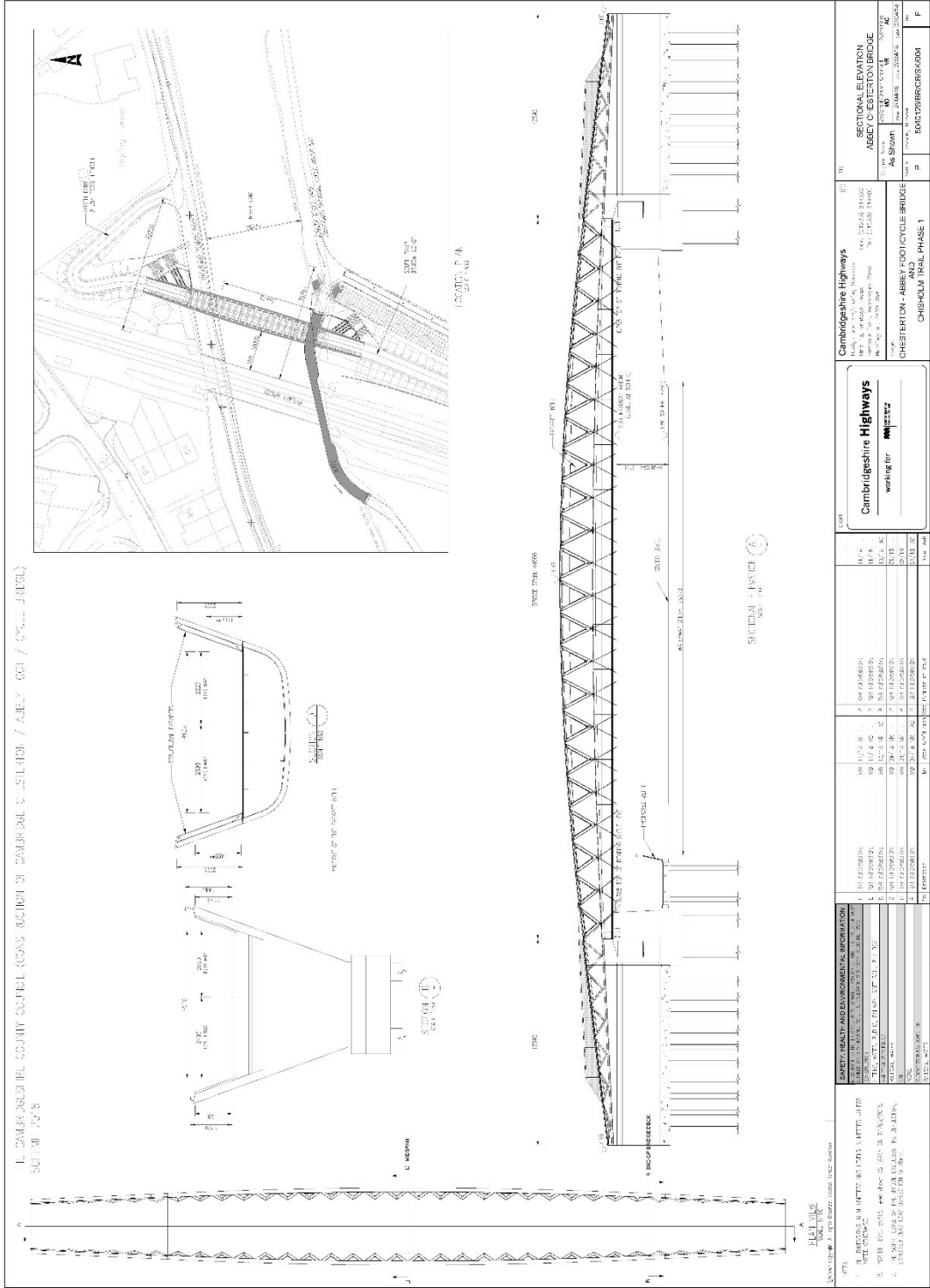
The total clear width across both lanes at the abutments is 4.51 metres, with a wider section at the middle of the bridge of 4.92 metres. The bridge will carry a 2.69 metres wide cycle path and a 2.22 metres wide footpath at its widest point. The total clear width across both lanes at the abutments is 4.51 metres.

The structural parapet varies from a height of 1.1m (1.4m on the cycle side) above the deck at the abutments, to 2m above the deck at mid-span.

The length of the south ramp structure is 87.60 metres, whilst the north ramp is 81.3 metres long.

5011 MI 237.8

L. CAMBRIDGE COUNTY COUNCIL (COUNCIL MEMBERS SECTION / ABBEY COT / ENV. LABEL)



DO NOT SCALE

A1

SECTION A-A

SAFETY, HEALTH AND ENVIRONMENTAL INFORMATION

1. THIS DRAWING IS A LETTER AND LETTERS OF THE DRAWING ARE TO BE READ IN CONNECTION WITH THE DRAWING.
2. THE DRAWING IS THE PROPERTY OF THE DRAWING OFFICE AND IS NOT TO BE REPRODUCED OR TRANSMITTED IN ANY FORM OR BY ANY MEANS, ELECTRONIC OR MECHANICAL, INCLUDING PHOTOCOPYING, RECORDING, OR BY ANY INFORMATION STORAGE AND RETRIEVAL SYSTEM.
3. THE DRAWING IS THE PROPERTY OF THE DRAWING OFFICE AND IS NOT TO BE REPRODUCED OR TRANSMITTED IN ANY FORM OR BY ANY MEANS, ELECTRONIC OR MECHANICAL, INCLUDING PHOTOCOPYING, RECORDING, OR BY ANY INFORMATION STORAGE AND RETRIEVAL SYSTEM.
4. THE DRAWING IS THE PROPERTY OF THE DRAWING OFFICE AND IS NOT TO BE REPRODUCED OR TRANSMITTED IN ANY FORM OR BY ANY MEANS, ELECTRONIC OR MECHANICAL, INCLUDING PHOTOCOPYING, RECORDING, OR BY ANY INFORMATION STORAGE AND RETRIEVAL SYSTEM.
5. THE DRAWING IS THE PROPERTY OF THE DRAWING OFFICE AND IS NOT TO BE REPRODUCED OR TRANSMITTED IN ANY FORM OR BY ANY MEANS, ELECTRONIC OR MECHANICAL, INCLUDING PHOTOCOPYING, RECORDING, OR BY ANY INFORMATION STORAGE AND RETRIEVAL SYSTEM.
6. THE DRAWING IS THE PROPERTY OF THE DRAWING OFFICE AND IS NOT TO BE REPRODUCED OR TRANSMITTED IN ANY FORM OR BY ANY MEANS, ELECTRONIC OR MECHANICAL, INCLUDING PHOTOCOPYING, RECORDING, OR BY ANY INFORMATION STORAGE AND RETRIEVAL SYSTEM.
7. THE DRAWING IS THE PROPERTY OF THE DRAWING OFFICE AND IS NOT TO BE REPRODUCED OR TRANSMITTED IN ANY FORM OR BY ANY MEANS, ELECTRONIC OR MECHANICAL, INCLUDING PHOTOCOPYING, RECORDING, OR BY ANY INFORMATION STORAGE AND RETRIEVAL SYSTEM.
8. THE DRAWING IS THE PROPERTY OF THE DRAWING OFFICE AND IS NOT TO BE REPRODUCED OR TRANSMITTED IN ANY FORM OR BY ANY MEANS, ELECTRONIC OR MECHANICAL, INCLUDING PHOTOCOPYING, RECORDING, OR BY ANY INFORMATION STORAGE AND RETRIEVAL SYSTEM.
9. THE DRAWING IS THE PROPERTY OF THE DRAWING OFFICE AND IS NOT TO BE REPRODUCED OR TRANSMITTED IN ANY FORM OR BY ANY MEANS, ELECTRONIC OR MECHANICAL, INCLUDING PHOTOCOPYING, RECORDING, OR BY ANY INFORMATION STORAGE AND RETRIEVAL SYSTEM.
10. THE DRAWING IS THE PROPERTY OF THE DRAWING OFFICE AND IS NOT TO BE REPRODUCED OR TRANSMITTED IN ANY FORM OR BY ANY MEANS, ELECTRONIC OR MECHANICAL, INCLUDING PHOTOCOPYING, RECORDING, OR BY ANY INFORMATION STORAGE AND RETRIEVAL SYSTEM.

NO.	DESCRIPTION	DATE	BY	CHECKED	SCALE
1	FOR APPROVAL	01/11/17	W. J. B. (0001)		
2	FOR APPROVAL	02/17/18	W. J. B. (0001)		
3	FOR APPROVAL	01/12/18	W. J. B. (0001)		
4	FOR APPROVAL	03/29/18	W. J. B. (0001)		
5	FOR APPROVAL	03/29/18	W. J. B. (0001)		
6	FOR APPROVAL	03/29/18	W. J. B. (0001)		
7	FOR APPROVAL	03/29/18	W. J. B. (0001)		
8	FOR APPROVAL	03/29/18	W. J. B. (0001)		
9	FOR APPROVAL	03/29/18	W. J. B. (0001)		
10	FOR APPROVAL	03/29/18	W. J. B. (0001)		

Cambridgeshire Highways		
NO.	DESCRIPTION	DATE
1	FOR APPROVAL	01/11/17
2	FOR APPROVAL	02/17/18
3	FOR APPROVAL	01/12/18
4	FOR APPROVAL	03/29/18
5	FOR APPROVAL	03/29/18
6	FOR APPROVAL	03/29/18
7	FOR APPROVAL	03/29/18
8	FOR APPROVAL	03/29/18
9	FOR APPROVAL	03/29/18
10	FOR APPROVAL	03/29/18

Cambridgeshire Highways		
NO.	DESCRIPTION	DATE
1	FOR APPROVAL	01/11/17
2	FOR APPROVAL	02/17/18
3	FOR APPROVAL	01/12/18
4	FOR APPROVAL	03/29/18
5	FOR APPROVAL	03/29/18
6	FOR APPROVAL	03/29/18
7	FOR APPROVAL	03/29/18
8	FOR APPROVAL	03/29/18
9	FOR APPROVAL	03/29/18
10	FOR APPROVAL	03/29/18

SECTIONAL ELEVATION		
ABBAY OF ELECTION BRIDGE		
NO.	DESCRIPTION	DATE
1	FOR APPROVAL	01/11/17
2	FOR APPROVAL	02/17/18
3	FOR APPROVAL	01/12/18
4	FOR APPROVAL	03/29/18
5	FOR APPROVAL	03/29/18
6	FOR APPROVAL	03/29/18
7	FOR APPROVAL	03/29/18
8	FOR APPROVAL	03/29/18
9	FOR APPROVAL	03/29/18
10	FOR APPROVAL	03/29/18

EXPLANATORY NOTE

(This note is not part of the Instrument)

This instrument confirms a Scheme to construct over the navigable waters of the River Cam the bridge specified in the Schedule to this Scheme as part of the highway which they are proposing to construct between the Chesterton and the Abbey wards of Cambridge in the said County.

The Secretary of State has modified this Bridge Scheme as follows:

1. In the opening paragraph on page 1 of the Order a closed bracket has been inserted after the words “the Council”.

2. In the Schedule to the Scheme, under “PLANS AND SPECIFICATIONS OF CAMBRIDGE CHESTERTON / ABBEY FOOT / CYCLE BRIDGE (SCHEME 2018)” the “s” has been deleted from “plans” and the word “scheme” within the title of the plan has been amended to “Scheme”. The paragraph has also been amended to accord with the single replacement plan.

3. In the Schedule to the Scheme, the paragraph titled “North Approach – Top of the North Abutment” the word “approximately” has been deleted and the measurement of 40 metres has been amended to 42.23 metres.

4. In the Schedule to the scheme, the paragraph titled “Ditton Meadows Approach – Top of the South Abutment” the word “approximately” has been deleted and the measurement of 30 metres has been amended to 35.79 metres.

5. In the Schedule to the Scheme, the heading “Headroom and Waterway” has been amended to “Headway and Waterway” and the measurements of 24.78m, +7.04m AOD and 109mm have been amended to 28.97m, +7.03m AOD and 3.17m respectively.

6. In the Schedule to the Scheme, the second paragraph under “Overall Dimensions” the measurements of 4.5 metres, 2.64 metres, 2.19 metres and 4.5 metres have been amended to 4.51 metres, 2.69 metres, 2.22 metres and 4.51 metres respectively.

7. In the Schedule to the Scheme, the fourth paragraph under “Overall Dimensions” the word “approximately” has been deleted and the measurements of 88 metres and 77 metres have been amended to 87.60 metres and 81.3 metres respectively.

8. The plans titled “The Cambridgeshire County Council (Construction of Cambridge Chesterton / Abbey Foot / Cycle Bridge) Scheme 2018 – General Arrangement Plan” and “The Cambridgeshire County Council (Construction of Cambridge Chesterton / Abbey Foot / Cycle Bridge) Scheme 2018 – Longitudinal and Transverse Section” have been replaced by plan Drawing No. 5040126/BR/CB/SK/004 Rev F titled “The Cambridgeshire County Council (Construction of Cambridge Chesterton / Abbey Foot / Cycle Bridge) Scheme 2018”.

© Crown copyright 2019

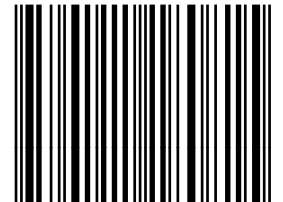
Printed and published in the UK by The Stationery Office Limited under the authority and superintendence of Jeff James, Controller of Her Majesty’s Stationery Office and Queen’s Printer of Acts of Parliament.

£4.90

UK201902071038 02/2019 19585

<http://www.legislation.gov.uk/id/uksi/2019/206>

ISBN 978-0-11-118081-5



9 780111 180815