

THE SCHEDULE TO THE SCHEME

Regulation 3

Plans and Specifications of the Grange Canal Bridge

The location and general design of the Bridge are shown on plans numbered 70058503/ODBO/0001 and 70058503/ODBO/0002 and marked The Stoke-on-Trent City Council (Grange Canal Bridge) Scheme 2020.

Points of Commencement and Termination

The Grange Canal Bridge is 556 metres east of the mid-point of A500 Wolstanton underpass and 136 metres west of Festival Way.

Span

Skew Span approximately 27 metres.

Headway

Required headway 2.7 metres over towpath. Headway provided is not less than 3 metres to any part of the Canal or Towpath.

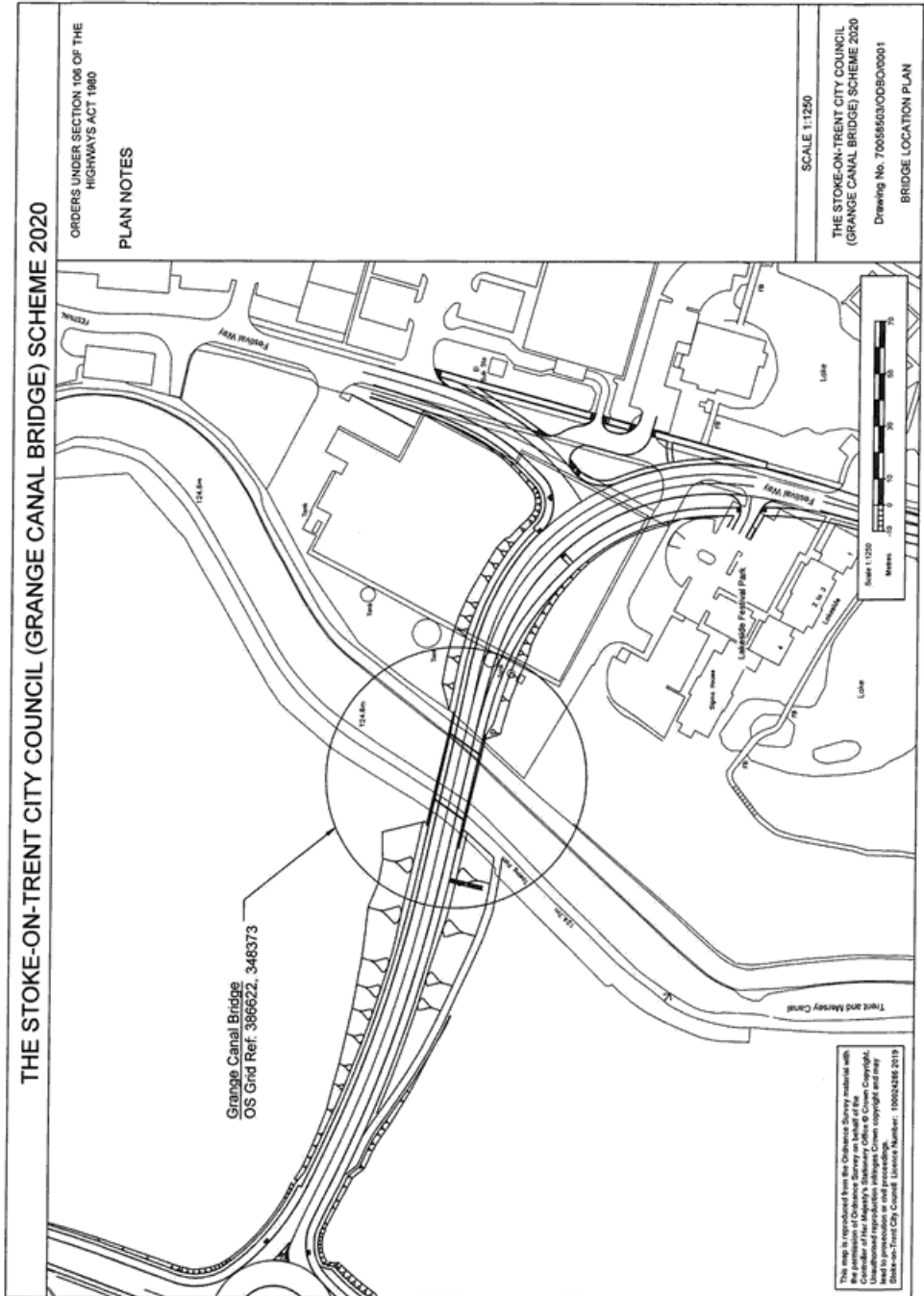
Waterway

The current minimum square width of the Canal beneath the Bridge is approximately 13.5 metres.

Overall Dimensions

The Bridge will be 15.8 metres wide overall and will carry a 7.3 metres wide carriageway. There will be a 2.5 metres minimum wide raised hard verge on the north of the bridge and a 3.7 metres wide combined footway and cycleway on the south of the Bridge.

Status: This is the original version (as it was originally made). This item of legislation is currently only available in its original format.



Status: This is the original version (as it was originally made). This item of legislation is currently only available in its original format.

